

720C 高性能蝶阀 Concentric Type PARA-SEAL

概要

720C 高性能蝶阀的阀板与阀座具有独特的结构设计，因此具有优良的切断性能和耐久性能，是一种用途广泛的调节阀。

GENERAL

This series is high performance butterfly valve of high durability, high seating performance. It has several different seal ring construction suitable to various service applications.

标准规格 STANDARD SPECIFICATIONS

本体部 BODY

| | |
|---------------------------------|--|
| 型号 Series | 720C |
| 公称通径 Body size | 6"~24" (150A~600A 即 DN150~DN600) |
| 阀板形状 Disc form | 同心型部分球面阀板 Concentric type segmental ball disc |
| 阀内件材质 Trim materials | 标准材质组合及使用温度·压力范围，请参见表 1。 |
| 阀内件处理 Trim treatment | See Table 1 for hardening treatment and operating pressure-temperature. |
| 公称压力 Body ratings | H Class Body / H 级阀体 : ANSI Class 600 ; PN 100 *① |
| 连接方式 Body connections | 法兰型 (RF、RTJ) Flanged (RF、RTJ) |
| 尺寸 Dimension | 请参见第 18~26 页。 See pages 18~26. |
| 阀体及上阀盖材质 Body & Bonnet Material | SCPH2/WCB, SCS13A/CF8, SCS14A /CF8M , and other alloy steels. 各种材质的使用温度·压力范围，请参见表 1 和表 2。 As to the operating pressure-temperature limitation for each material, see Tables 1 and 2. |
| 上阀盖形式 Bonnet type | 标准型 Standard type : 6"~24"(150A~600A) ... -45~+450℃ 但必须注意各材质的使用温度·压力范围。 Please notice the operating pressure-temperature limitation for each material. |
| 填料 Packing | 请参见图 2。 See Fig. 2 for selection. |
| 表面涂层色 Painting color | 银灰色 (环氧树脂)。但是阀体材质为不锈钢时，本体部不加涂层。 Munsell N-6 (Epoxy resin group) is standard. In the case of stainless steel body, no painting is standard. |

*① PN 100 表示 JB/T79.2-94(或 HG/T20592-2009) 10MPa。

| | | | |
|----------------------|---------|--|---|
| 规格 Specification | 型号 Type | 气缸式 Pneumatic cylinder type | |
| | | 6300RC, 6500RA, 7300RB, 6400RB(仅双动作 only Double acting type) | |
| | | 单动作型 Spring return type | 双动作型 Double acting type |
| 用途 Purpose | | 调节 Modulation | |
| 供气压力 Air supply | | 300, 400, 500 kPa G | 300~500 kPa G |
| 接口 Connection | | 空气配管：请参照 18~26 页。 Air piping : See pages 18~26. | |
| 回转角度 Angle rotation | | 60 or 90 deg | |
| 正作用 Direct action | | 气压增加阀闭 Air to valve shut | 随输入定位器信号增加阀开或阀闭。 |
| 反作用 Reverse action | | 气压增加阀开 Air to valve open | Valve open or shut by air or electric signal. |
| 滞后 Hysteresis | | ≤1.5% FS (带定位器) ≤1.5% of full stroke with positioner | |
| 直线性 Linearity | | ≤±2% FS (带定位器) ≤±2% of full stroke with positioner | |
| 允许环境温度 Ambient Temp. | | -20~+60℃ | |
| 表面涂层色 Painting | | 6300RC : 气缸 Cylinder.....Alodur (Special hard anodized) : Gray 气缸盖 End cap.....Chromatized + Polyester coated : Gray 6500RA : 银色环氧树脂 Munsell : N-6 7300RB : 银色环氧树脂 Munsell : N-6 6400RB : 银色环氧树脂 Munsell : N-6 | |
| 选购设备 Option | | E/P、P/P 定位器、过滤减压阀、电磁阀、限位开关、调速器、锁止阀、限位件、手动操作机构。 E/P, P/P-Positioner, Air-set, Solenoid valve, Limit switch, Position transmitter, Lock valve, Speed controller, Rotation stopper, Manual handle, etc. | |

性能 PERFORMANCE

| | |
|-------------------------------|-------------------------------|
| 额定 Cv 值 Rated Cv | 请参见表 3。 See Table 3. |
| 流量特性 Flow characteristics | 固有特性。 Inherent characteristic |
| 阀座泄漏量 Seat Leakage | 请参见图 1。 See Fig. 1. |
| 允许压差 Allowable pressure drops | 请参见表 4。 See Table 4. |

特殊规格（有偿） OPTIONAL SPECIAL SPECIFICATIONS (Additional cost is required)

| | |
|---|---|
| 本体部特殊检查 Special testing for body | 材料检查 {液体渗透探伤检查 (PT)、放射线检查 (RT)}、流量特性检查、低温试验、蒸汽试验 Material certificate, Liquid penetrant testing, Radiographic testing, Flow characteristic testing, Low temperature testing, Steam testing. |
| 本体部特殊清洗 Special cleaning for body | 完全禁油、除水处理 Oxygen clean, Oil-free, Water-free |
| 本体部及执行机构特殊规格 Special specification for body and actuator | 防砂、防尘型、防盐腐蚀型、寒冷地区用、热带地区用、无铜处理、特殊空气配管及特殊气接头、真空工作条件用、接触大气部分的螺栓、螺母采用不锈钢、指定涂层色 Sand and Dust proof, Salty environment proof, Cold area proof, Tropical area proof, Copper-free alloy, Special piping and fitting, Vacuum service proof, SUS bolt and nut for exposed parts, Non-standard painting. |
| 认证 Authorization | 获得高压气体认定法的认定 Japanese government authorization for high pressure gas. |

表 1 阀体、阀内件标准材质组合及使用温度范围

Table 1 BODY/TRIM STANDARD MATERIAL COMBINATION, OPERATING TEMPERATURE

- R.TFE (F) : 二硫化钼强化聚四氟乙烯 MoS₂ filled Reinforced Teflon
- R.TFE (C) : 碳纤维强化聚四氟乙烯 Carbonfiber filled Reinforced Teflon
- Hcr : 镀硬铬 Hard chrome plated
- S.S : 部分堆焊司太莱合金 Stellite seat surface
- PH : 析出硬化热处理 Precipitation hardening
- 密封环的材质・处理以及使用温度・压力范围请参见图 1。
Seal ring material/treatment vs operating temperature-pressure limitation : See Fig. 1.
- 要求禁油除水时, 轴承材质为 SUS316+TFE。
When oxygen clean service is required, bearing material is SUS316/Teflon.

表 1-1 阀体材质: SCPH2/WCB, SCS13A/A351-CF8

阀板材质: A351-CF8

Table 1-1 BODY MATERIAL : SCPH2/WCB, SCS13A/A351-CF8

DISC MATERIAL : A351-CF8

| 阀体材质 Body material | | SCPH2/A216-WCB, SCS13A/A351-CF8 | | | | |
|-------------------------------|-----------------|---------------------------------|--------------|-----------|----------------------|----------------------|
| 阀板 Disc | 材质 Material | A351-CF8 | | | A351-CF8 | |
| | 处理 Treatment | Hcr | | | S.S | |
| 阀杆 Stem | 材质 Material | SUS630 | | | SUS630 | |
| | 处理 Treatment | PH | | | PH | |
| 压圈 Retainer | 材质 Material | SUS304 | | | SUS304 | |
| 轴承 Bearing | 材质 Material | SUS316 | | | SUS316 | |
| | 处理 Treatment | Hcr | | | Hcr | |
| 密封环 Seal ring | 形式 Type | FN | FV | CS | HT | HG |
| | 材质 Material | R.TFE (F) | R.TFE (F) | R.TFE (C) | SUS630 | SUS630 |
| | 处理 Treatment | — | — | — | PH | PH |
| 垫环 Back ring | 处理 Material | NBR O ring | VITON O ring | SUS316 | 聚四氟乙烯纤维 Teflon fiber | 柔性石墨纤维 Grafoil fiber |
| 使用温度 Operating temperature °C | SCPH2/WCB Body | -5~+60 | -5~+180 | -5~+250 | -5~+230 | -5~+400 |
| | SCS13A/CF8 Body | -45~+60 | -10~+180 | -45~+250 | -45~+230 | -45~+400 |

表 1-2 阀体材质: SCS14A/A351-CF8M (标准型上阀盖)

Table 1-2 BODY MATERIAL : SCS14A/A351-CF8M (STANDARD BONNET)

| 阀体材质 Body material | | SCS14A/A351-CF8M | | | | |
|-------------------------|--------------|------------------|-----------------|-----------|-------------------------|-------------------------|
| 阀板 Disc | 材质 Material | A351-CF8M | | | A351-CF8M | |
| | 处理 Treatment | Hcr | | | S.S | |
| 阀杆 Stem | 材质 Material | SUS316 | | | SUS316 | |
| | 处理 Treatment | — | | | — | |
| 压圈 Retainer | 材质 Material | SUS316 | | | SUS316 | |
| 轴承 Bearing | 材质 Material | SUS316 | | | SUS316 | |
| | 处理 Treatment | Hcr | | | Hcr | |
| 密封环 Seal ring | 形式 Type | FN | FV | CS | HT | HG |
| | 材质 Material | R.TFE (F) | R.TFE (F) | R.TFE (C) | SUS316 | SUS316 |
| | 处理 Treatment | — | — | — | — | — |
| 垫环 Back ring | 处理 Material | NBR O ring | VITON O ring | SUS316 | 聚四氟乙烯纤维 Teflon fiber | 柔性石墨纤维 Grafoil fiber |
| 使用温度 Operating Temp. °C | | -45~+60 | -10~+180 | -45~+250 | -45~+230 | -45~+450 |

表 2 阀体材质的使用温度・压力范围

Table 2 BODY MATERIAL/OPERATING PRESSURE-TEMPERATURE RATING

表 2-1 Table 2-1 ANSI

UNIT : MPa G

| 温度 Temp. °C | Class 150 | | | | | | Class 300 | | | | | | Class 600 | | | | | |
|-------------------|--------------|--------------|---------------|--------------|---------------|----------------|--------------|--------------|---------------|--------------|---------------|----------------|--------------|--------------|---------------|--------------|---------------|----------------|
| | SCPL1 LCB | SCPH2 WCB | SCPH21 WC6 | SCPH61 C5 | SCS13A CF8 | SCS14A CF8M | SCPL1 LCB | SCPH2 WCB | SCPH21 WC6 | SCPH61 C5 | SCS13A CF8 | SCS14A CF8M | SCPL1 LCB | SCPH2 WCB | SCPH21 WC6 | SCPH61 C5 | SCS13A CF8 | SCS14A CF8M |
| -196~38 | — | — | — | — | 1.90 | 1.90 | — | — | — | — | 4.95 | 4.95 | — | — | — | — | 9.91 | 9.92 |
| -45~38 | 1.84 | — | — | — | 1.90 | 1.90 | 4.78 | — | — | — | 4.95 | 4.95 | 9.57 | — | — | — | 9.91 | 9.92 |
| -5~38 | 1.84 | 1.96 | 1.99 | 1.99 | 1.90 | 1.90 | 4.78 | 5.10 | 5.16 | 5.16 | 4.95 | 4.95 | 9.57 | 10.20 | 10.32 | 10.32 | 9.91 | 9.92 |
| 50 | 1.81 | 1.92 | 1.92 | 1.92 | 1.84 | 1.84 | 4.72 | 5.00 | 5.10 | 5.16 | 4.77 | 4.80 | 9.46 | 10.01 | 10.22 | 10.32 | 9.56 | 9.62 |
| 100 | 1.72 | 1.76 | 1.76 | 1.76 | 1.56 | 1.61 | 4.51 | 4.63 | 4.88 | 5.14 | 4.08 | 4.21 | 9.02 | 9.27 | 9.74 | 10.29 | 8.17 | 8.43 |
| 150 | 1.57 | 1.57 | 1.57 | 1.57 | 1.39 | 1.47 | 4.40 | 4.51 | 4.63 | 5.01 | 3.62 | 3.85 | 8.78 | 9.04 | 9.26 | 10.03 | 7.26 | 7.69 |
| 200 | 1.40 | 1.40 | 1.40 | 1.40 | 1.25 | 1.37 | 4.26 | 4.38 | 4.54 | 4.88 | 3.27 | 3.56 | 8.54 | 8.75 | 9.09 | 9.75 | 6.54 | 7.12 |
| 250 | 1.20 | 1.20 | 1.20 | 1.20 | 1.16 | 1.20 | 4.05 | 4.16 | 4.44 | 4.62 | 3.04 | 3.34 | 8.11 | 8.33 | 8.88 | 9.26 | 6.10 | 6.67 |
| 300 | 1.01 | 1.01 | 1.01 | 1.01 | 1.01 | 1.01 | 3.76 | 3.87 | 4.23 | 4.23 | 2.91 | 3.15 | 7.54 | 7.74 | 8.48 | 8.48 | 5.80 | 6.32 |
| 350 | 0.84 | 0.84 | 0.84 | 0.84 | 0.84 | 0.84 | 3.59 | 3.69 | 4.01 | 4.01 | 2.81 | 3.03 | 7.18 | 7.38 | 8.04 | 8.04 | 5.60 | 6.07 |
| 375 | | 0.73 | 0.73 | 0.73 | 0.73 | 0.73 | | 3.64 | 3.88 | 3.88 | 2.77 | 2.96 | | 7.28 | 7.75 | 7.75 | 5.54 | 5.93 |
| 400 | | 0.64 | 0.64 | 0.64 | 0.64 | 0.64 | | 3.44 | 3.65 | 3.65 | 2.74 | 2.91 | | 6.89 | 7.31 | 7.31 | 5.48 | 5.81 |
| 425 | | 0.55 | 0.55 | 0.55 | 0.55 | 0.55 | | 2.88 | 3.50 | 3.44 | 2.71 | 2.87 | | 5.74 | 7.01 | 6.91 | 5.42 | 5.72 |
| 450 | | 0.47 | 0.47 | 0.47 | 0.47 | 0.47 | | 1.99 | 3.38 | 3.08 | 2.68 | 2.81 | | 4.00 | 6.75 | 6.17 | 5.37 | 5.61 |
| 475 | | 0.37 | 0.37 | 0.37 | 0.37 | 0.37 | | 1.35 | 3.16 | 2.58 | 2.65 | 2.73 | | 2.70 | 6.32 | 5.17 | 5.30 | 5.46 |
| 500 | | 0.28 | 0.28 | 0.28 | 0.28 | 0.28 | | 0.88 | 2.77 | 2.02 | 2.60 | 2.67 | | 1.75 | 5.55 | 4.04 | 5.20 | 5.37 |
| 525 | | 0.18 | 0.18 | 0.18 | 0.18 | 0.18 | | 0.51 | 2.02 | 1.53 | 2.19 | 2.57 | | 1.03 | 4.04 | 3.07 | 4.77 | 5.15 |
| 538 | | 0.13 | 0.15 | 0.15 | 0.15 | 0.15 | | 0.34 | 1.63 | 1.34 | 2.18 | 2.53 | | 0.72 | 3.26 | 2.69 | 4.55 | 5.06 |

表 2-2 Table 2-2 JIS UNIT : MPa G

| 温度 Temp. °C | 10K | 20K | 30K | | 40K | |
|----------------|-------|-------|-------|--------|-------|--------|
| | SCPH2 | SCPH2 | SCPH2 | SCPH21 | SCPH2 | SCPH21 |
| -5~120 | 1.37 | 3.33 | 4.99 | 4.99 | 6.66 | 6.66 |
| ~220 | 1.17 | 3.03 | 4.50 | 4.50 | 6.07 | 6.07 |
| ~300 | 0.98 | 2.84 | 4.21 | 4.21 | 5.58 | 5.58 |
| ~350 | | 2.54 | 3.82 | 3.82 | 5.09 | 5.09 |
| ~400 | | 2.25 | 3.33 | 3.72 | 4.50 | 4.99 |
| ~425 | | 1.96 | 2.94 | 3.52 | 3.92 | 4.70 |
| ~450 | | | | | | 4.41 |
| ~475 | | | | | | 4.11 |
| ~490 | | | | | | 3.92 |
| ~500 | | | | | | 3.72 |
| ~510 | | | | | | 3.52 |

表 2-3 Table 2-3 JB/T79-94 或 HG/T20592-2009 UNIT : MPa G

| 温度 Temp. °C | PN16 | PN40 | PN63 | PN100 | 温度 Temp. °C | PN16 | PN40 | PN63 | PN100 |
|----------------|-----------|------|------|-------|----------------|------------|------|------|-------|
| | ZG230-450 | | | | | ZG0Cr18Ni9 | | | |
| -5~200 | 1.60 | 4.00 | 6.30 | 10.00 | -45~200 | 1.60 | 4.00 | 6.30 | 10.00 |
| ~250 | 1.40 | 3.50 | 5.40 | 9.00 | ~300 | 1.40 | 3.50 | 5.40 | 9.00 |
| ~300 | 1.20 | 3.00 | 4.80 | 7.50 | ~400 | 1.20 | 3.00 | 4.80 | 7.50 |
| ~350 | 1.10 | 2.60 | 4.00 | 6.60 | ~480 | 1.10 | 2.60 | 4.00 | 6.60 |
| ~400 | 0.90 | 2.30 | 3.70 | 5.80 | ~520 | 0.90 | 2.30 | 3.70 | 5.80 |
| ~425 | 0.80 | 2.00 | 3.20 | 5.00 | ~560 | 0.80 | 2.00 | 3.20 | 5.00 |
| ~435 | 0.70 | 1.80 | 2.80 | 4.50 | | | | | |
| ~445 | 0.62 | 1.60 | 2.50 | 4.20 | | | | | |
| ~455 | 0.57 | 1.40 | 2.30 | 3.60 | | | | | |

图 1 密封环的使用温度·压力范围及阀座允许泄漏量

Fig. 1 SEAL RING OPERATING PRESSURE-TEMPERATURE RATINGS AND ALLOWABLE SEAT LEAKAGE

(——— 阀闭时允许的流体压力 - - - - 调节时允许的压差)

(——— allowable fluid pressure at Valve Shut - - - - allowable differential pressure at Modulation)

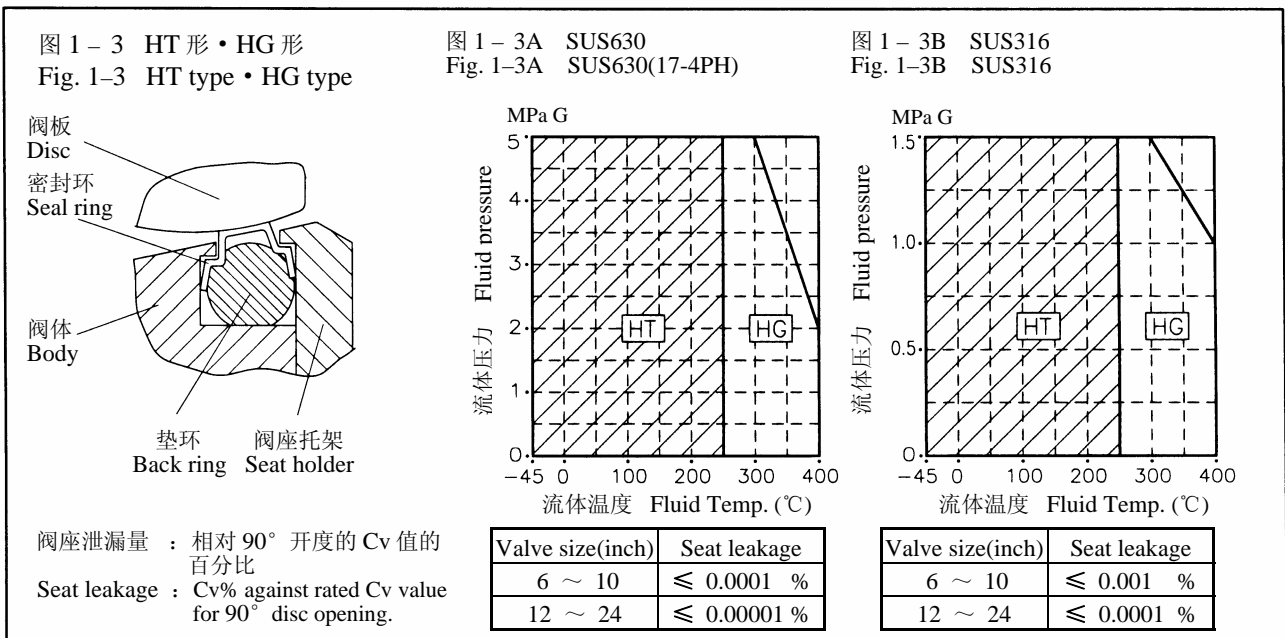
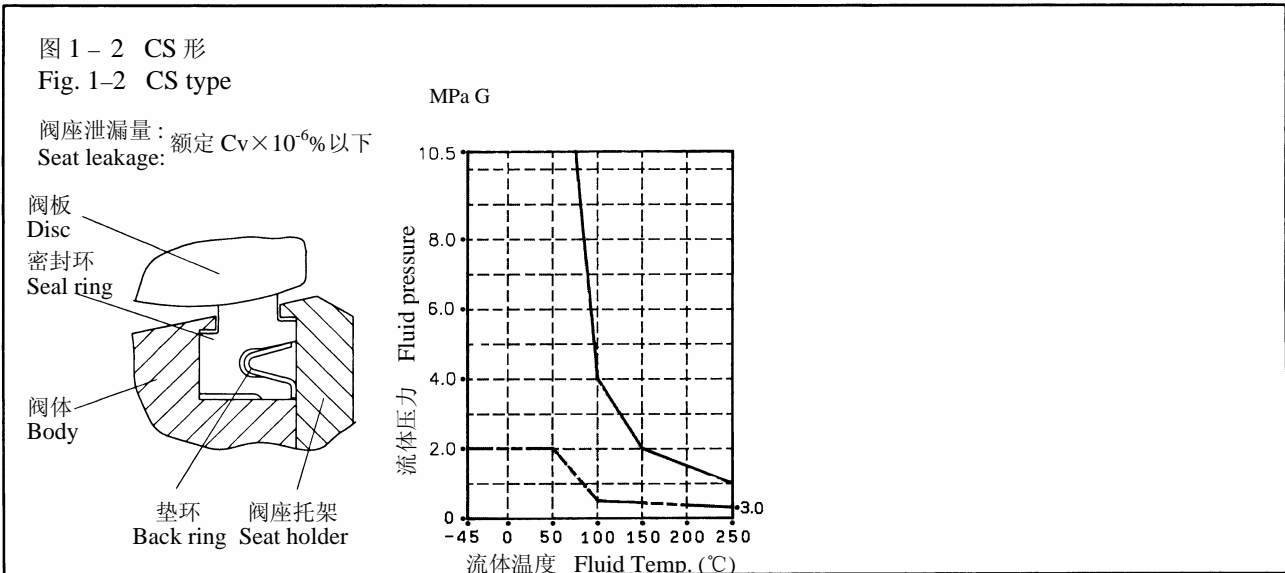
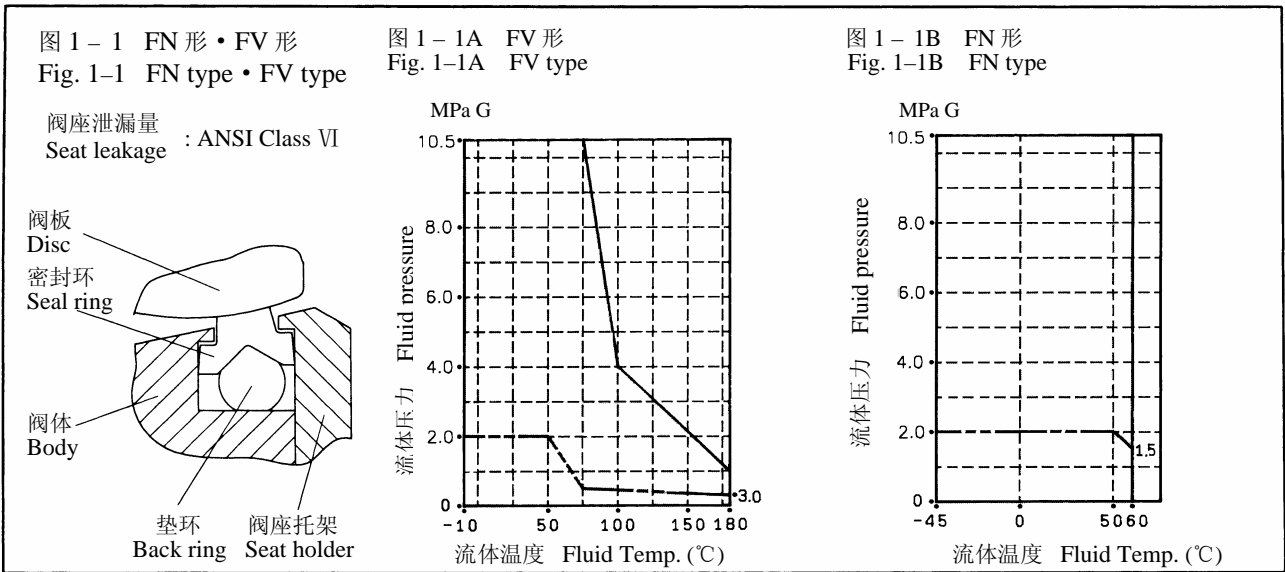


图 2 填料使用温度·压力范围

Fig. 2 GLAND PACKING PRESSURE-TEMPERATURE RATINGS

图 2-1 低摩擦型:

聚四氟乙烯碳纤维(P4519+P6528)
聚四氟乙烯纤维 + 纯聚四氟乙烯
(P4525 + P4390W₂)禁油用

Fig. 2-1 TFE CARBON/
TFE FIBER + PURE TFE

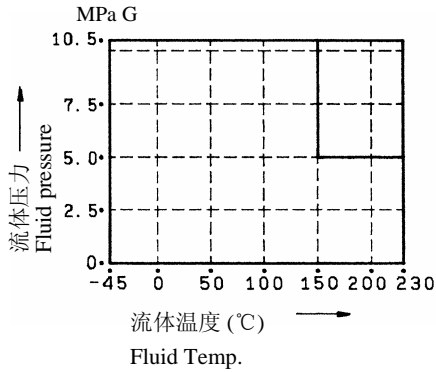


图 2-2 柔性石墨(P6710CL+P6610CL)

Fig.2-2 GRAFOIL

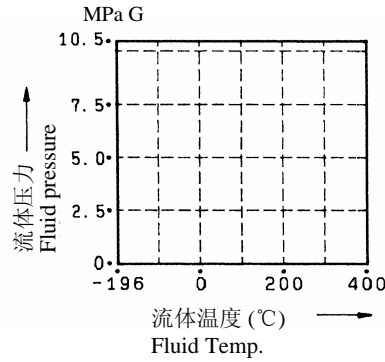


图 2-3 柔性石墨(P6710CH+P6610CH)

Fig.2-3 GRAFOIL

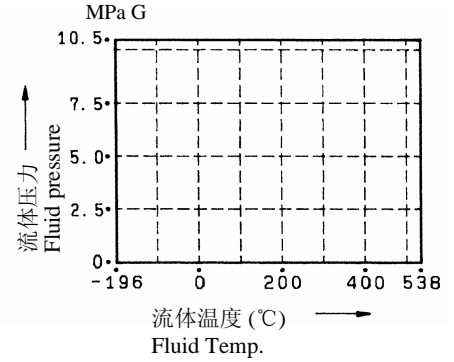


表 3 额定 Cv 值

Table 3 Cv VALUE

| 公称通径 Valve size inch (mm) | H 级阀体 H CLASS BODY | |
|---------------------------------|--------------------|--------------------|
| | 60° 开度 60° Open | 90° 开度 90° Open |
| 6 (150) | 555 | 970 |
| 8 (200) | 950 | 1680 |
| 10 (250) | 1550 | 2680 |
| 12 (300) | 2110 | 3680 |
| 14 (350) | 2810 | 4950 |
| 16 (400) | 3680 | 6450 |
| 18 (450) | 4650 | 8300 |
| 20 (500) | 5750 | 10100 |
| 24 (600) | 8250 | 14500 |

图 3 本体部构造

Fig. 3 BODY SECTION VIEW

图 3-1 公称通径 14B 以下

Fig. 3-1 VALVE SIZE 14" AND UNDER

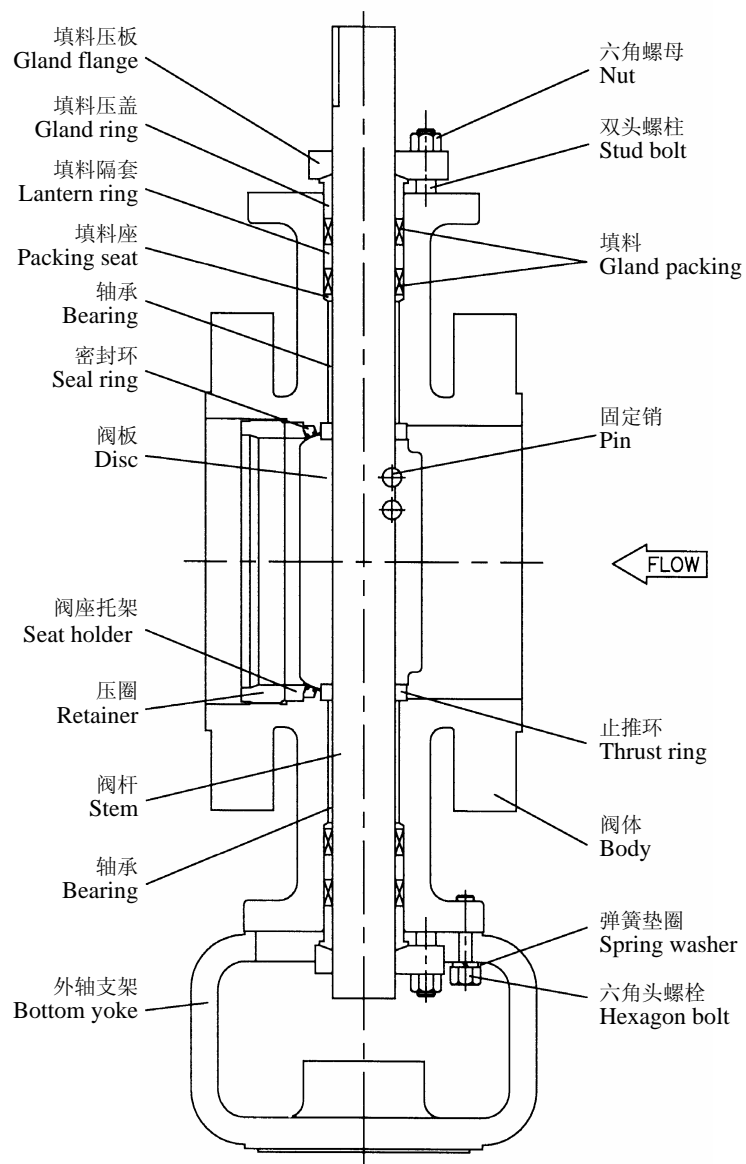


图 3-2 公称通径 16B 以上
 Fig. 3-2 VALVE SIZE 16" AND OVER

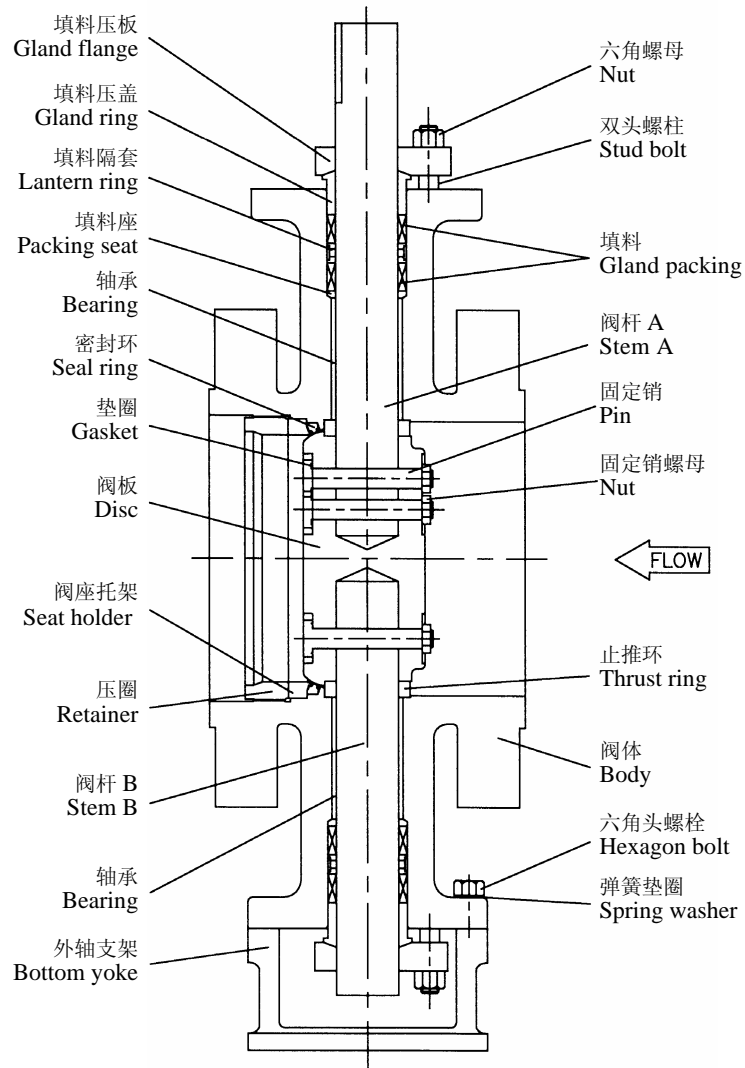


表 4 最大允许压差 (单位: MPa)

Table 4 ALLOWABLE PRESSURE DROPS (UNIT : MPa)

阀门口径与执行机构的标准组合请参见第 18~26 页。 See pages 18~26 for valve size-actuator size combinations.

Shut : 阀门时允许的压差 Allowable pressure drops at shut off

ΔP : 60° 开度时允许的压差 Allowable pressure drops at disc 60 deg opening

注: 此表不适用于加长型上阀盖及外部轴承型上阀盖的情况。

Note : For long extension type bonnet and outer bearing type bonnet, do not apply this table.

表 4-1 双动作型气缸式执行机构

Table 4-1 DOUBLE ACTING PNEUMATIC CYLINDER ACTUATOR

表 4-1A H 级阀体 / 6300RC、6400RB

Table 4-1A H CLASS BODY / 6300RC, 6400RB DOUBLE ACTING TYPE

| 执行机构 型号及尺寸 Actuator code & size | 阀杆材质 Stem material | 密封环 Seal ring | 气源压力 Air SUP. kPa | 用途 Purpose | 填料: 低摩擦型 PACKING : LOW TORQUE TYPE | | | | | | | | | |
|--|--------------------------|------------------|-------------------------|---------------|---------------------------------------|------|------|------|------|------|------|------|------|------|
| | | | | | 公称通径 Valve size (inch) | | | | | | | | | |
| | | | | | 6 | 8 | 10 | 12 | 14 | 16 | 18 | 20 | 24 | |
| AT601U 63C6RC | SUS316 | FN, FV CS | 400 | Shut | 3.63 | | | | | | | | | |
| | | | | ΔP | 0.80 | | | | | | | | | |
| | | HG | 400 | Shut | 1.88 | | | | | | | | | |
| | | | | ΔP | 0.80 | | | | | | | | | |
| | SUS630 | FN, FV CS | 400 | Shut | 3.63 | | | | | | | | | |
| | | | | ΔP | 0.80 | | | | | | | | | |
| | | HG | 400 | Shut | 1.88 | | | | | | | | | |
| | | | | ΔP | 0.80 | | | | | | | | | |
| | INCONEL 718 | HG | 400 | Shut | 1.88 | | | | | | | | | |
| | | | | ΔP | 0.80 | | | | | | | | | |
| | AT651U 63CERC | SUS316 | FN, FV CS | 400 | Shut | 6.84 | 3.35 | | | | | | | |
| | | | | | ΔP | 1.48 | 0.64 | | | | | | | |
| HG | | | 400 | Shut | 4.36 | 1.99 | | | | | | | | |
| | | | | ΔP | 1.48 | 0.64 | | | | | | | | |
| SUS630 | | FN, FV CS | 400 | Shut | 6.84 | 3.35 | | | | | | | | |
| | | | | ΔP | 1.48 | 0.64 | | | | | | | | |
| | | HG | 400 | Shut | 4.36 | 1.99 | | | | | | | | |
| | | | | ΔP | 1.48 | 0.64 | | | | | | | | |
| INCONEL 718 | | HG | 400 | Shut | 4.36 | 1.99 | | | | | | | | |
| | | | | ΔP | 1.48 | 0.64 | | | | | | | | |
| AT701U 63C7RC | | SUS316 | FN, FV CS | 400 | Shut | 7.00 | 4.70 | 2.04 | | | | | | |
| | | | | | ΔP | 1.80 | 0.97 | 0.40 | | | | | | |
| | HG | | 400 | Shut | 4.60 | 3.20 | 1.17 | | | | | | | |
| | | | | ΔP | 1.80 | 0.97 | 0.40 | | | | | | | |
| | SUS630 | FN, FV CS | 400 | Shut | 10.4 | 5.18 | 2.04 | | | | | | | |
| | | | | ΔP | 2.23 | 0.97 | 0.40 | | | | | | | |
| | | HG | 400 | Shut | 5.00 | 3.42 | 1.17 | | | | | | | |
| | | | | ΔP | 2.00 | 0.97 | 0.40 | | | | | | | |
| | INCONEL 718 | HG | 400 | Shut | 5.00 | 3.42 | 1.17 | | | | | | | |
| | | | | ΔP | 2.23 | 0.97 | 0.40 | | | | | | | |
| | 6420RB 200×4 | SUS316 | FN, FV CS | 400 | Shut | | | 6.00 | 5.10 | 3.90 | 3.90 | 2.88 | 2.25 | 1.31 |
| | | | | | ΔP | | | 1.40 | 1.15 | 0.78 | 0.72 | 0.52 | 0.39 | 0.23 |
| HG | | | 400 | Shut | | | 4.60 | 4.00 | 3.10 | 2.99 | 2.09 | 1.59 | 0.92 | |
| | | | | ΔP | | | 1.40 | 1.15 | 0.78 | 0.72 | 0.52 | 0.39 | 0.23 | |
| SUS630 | | FN, FV CS | 400 | Shut | | | 10.5 | 7.48 | 5.77 | 3.90 | 2.88 | 2.25 | 1.31 | |
| | | | | ΔP | | | 2.00 | 1.56 | 1.04 | 0.72 | 0.52 | 0.39 | 0.23 | |
| | | HG | 400 | Shut | | | 5.00 | 5.67 | 4.37 | 2.99 | 2.09 | 1.59 | 0.92 | |
| | | | | ΔP | | | 2.57 | 1.56 | 1.04 | 0.72 | 0.52 | 0.39 | 0.23 | |
| INCONEL 718 | | HG | 400 | Shut | | | 5.00 | 5.67 | 4.37 | 2.99 | 2.09 | 1.59 | 0.92 | |
| | | | | ΔP | | | 2.57 | 1.56 | 1.04 | 0.72 | 0.52 | 0.39 | 0.23 | |
| 6428RB 280×4 | | SUS316 | FN, FV CS | 400 | Shut | | | 6.00 | 5.10 | 3.90 | 4.10 | 3.20 | 2.40 | 2.15 |
| | | | | | ΔP | | | 1.40 | 1.15 | 0.78 | 0.84 | 0.60 | 0.45 | 0.39 |
| | HG | | 400 | Shut | | | 4.60 | 4.00 | 3.10 | 3.20 | 5.16 | 4.05 | 2.46 | |
| | | | | ΔP | | | 1.40 | 1.15 | 0.78 | 0.84 | 1.19 | 0.89 | 0.52 | |
| | SUS630 | FN, FV CS, KS | 400 | Shut | | | 10.5 | 10.5 | 8.50 | 8.50 | 6.76 | 5.36 | 3.24 | |
| | | | | ΔP | | | 2.00 | 2.00 | 1.70 | 1.64 | 1.19 | 0.89 | 0.52 | |
| | | HG | 400 | Shut | | | 5.00 | 5.00 | 5.00 | 5.00 | 5.00 | 4.05 | 2.46 | |
| | | | | ΔP | | | 3.10 | 2.50 | 1.70 | 1.64 | 1.19 | 0.89 | 0.52 | |
| | INCONEL 718 | HG | 400 | Shut | | | 5.00 | 5.00 | 5.00 | 5.00 | 5.00 | 4.05 | 2.46 | |
| | | | | ΔP | | | 4.40 | 3.50 | 2.34 | 1.64 | 1.19 | 0.89 | 0.52 | |

表 4-1B H 级阀体 / 7300RB、6500RA 双动作

Table 4-1B H CLASS BODY / 7300RB, 6500RA DOUBLE ACTING TYPE

| 执行机构 型号及尺寸 Actuator code & size | 阀杆材质 Stem material | 密封环 Seal ring | 气源压力 Air SUP. kPa | 用途 Purpose | 填料：低摩擦型 PACKING : LOW TORQUE TYPE | | | | | | | | | |
|--|--------------------------|------------------|-------------------------|---------------|--------------------------------------|------|------|------|------|------|----|----|----|--|
| | | | | | 公称通径 Valve size (inch) | | | | | | | | | |
| | | | | | 6 | 8 | 10 | 12 | 14 | 16 | 18 | 20 | 24 | |
| 7323RB 235×2 | SUS316 | FN, FV CS | 400 | Shut | 6.51 | 3.18 | | | | | | | | |
| | | | | Δ P | 1.41 | 0.61 | | | | | | | | |
| | HG | 400 | Shut | 4.10 | 1.86 | | | | | | | | | |
| | | | Δ P | 1.41 | 0.61 | | | | | | | | | |
| | SUS630 | FN, FV CS | 400 | Shut | 6.51 | 3.18 | | | | | | | | |
| | | | | Δ P | 1.41 | 0.61 | | | | | | | | |
| | HG | 400 | Shut | 4.10 | 1.86 | | | | | | | | | |
| | | | Δ P | 1.41 | 0.61 | | | | | | | | | |
| INCONEL 718 | HG | 400 | Shut | 4.10 | 1.86 | | | | | | | | | |
| | | | Δ P | 1.41 | 0.61 | | | | | | | | | |
| 7328RB 280×2 | SUS316 | FN, FV CS | 400 | Shut | 7.00 | 4.70 | 2.43 | | | | | | | |
| | | | | Δ P | 1.80 | 1.00 | 0.48 | | | | | | | |
| | HG | 400 | Shut | 4.60 | 3.20 | 1.48 | | | | | | | | |
| | | | Δ P | 1.80 | 1.00 | 0.48 | | | | | | | | |
| | SUS630 | FN, FV CS | 400 | Shut | 10.5 | 6.02 | 2.43 | | | | | | | |
| | | | | Δ P | 2.00 | 1.12 | 0.48 | | | | | | | |
| | HG | 400 | Shut | 5.00 | 4.08 | 1.48 | | | | | | | | |
| | | | Δ P | 2.57 | 1.12 | 0.48 | | | | | | | | |
| INCONEL 718 | HG | 400 | Shut | 5.00 | 4.08 | 1.48 | | | | | | | | |
| | | | Δ P | 2.57 | 1.12 | 0.48 | | | | | | | | |
| 7337RB 375×2 | SUS316 | FN, FV CS | 400 | Shut | | 4.70 | 6.00 | 4.23 | 3.26 | 2.15 | | | | |
| | | | | Δ P | | 1.00 | 1.28 | 0.77 | 0.51 | 0.35 | | | | |
| | HG | 400 | Shut | | 3.20 | 4.70 | 3.05 | 2.35 | 1.56 | | | | | |
| | | | Δ P | | 1.00 | 1.28 | 0.77 | 0.51 | 0.35 | | | | | |
| | SUS630 | FN, FV CS | 400 | Shut | | 10.2 | 6.68 | 4.23 | 3.26 | 2.15 | | | | |
| | | | | Δ P | | 2.00 | 1.28 | 0.77 | 0.51 | 0.35 | | | | |
| | HG | 400 | Shut | | 5.00 | 4.86 | 3.05 | 2.35 | 1.56 | | | | | |
| | | | Δ P | | 2.20 | 1.28 | 0.77 | 0.51 | 0.35 | | | | | |
| INCONEL 718 | HG | 400 | Shut | | 5.00 | 4.86 | 3.05 | 2.35 | 1.56 | | | | | |
| | | | Δ P | | 2.78 | 1.28 | 0.77 | 0.51 | 0.35 | | | | | |
| 6520RA 200×2 | SUS316 | FN, FV CS | 400 | Shut | 7.00 | 4.70 | 2.53 | | | | | | | |
| | | | | Δ P | 1.80 | 1.00 | 0.50 | | | | | | | |
| | HG | 400 | Shut | 4.60 | 3.20 | 1.57 | | | | | | | | |
| | | | Δ P | 1.80 | 1.00 | 0.50 | | | | | | | | |
| | SUS630 | FN, FV CS | 400 | Shut | 12.5 | 6.24 | 2.53 | | | | | | | |
| | | | | Δ P | 2.00 | 1.16 | 0.50 | | | | | | | |
| | HG | 400 | Shut | 5.00 | 4.26 | 1.57 | | | | | | | | |
| | | | Δ P | 2.66 | 1.16 | 0.50 | | | | | | | | |
| INCONEL 718 | HG | 400 | Shut | 5.00 | 4.26 | 1.57 | | | | | | | | |
| | | | Δ P | 2.66 | 1.16 | 0.50 | | | | | | | | |
| 6528RA 280×2 | SUS316 | FN, FV CS | 400 | Shut | | 4.70 | 6.00 | 4.48 | 3.45 | 2.28 | | | | |
| | | | | Δ P | | 1.00 | 1.36 | 0.82 | 0.54 | 0.37 | | | | |
| | HG | 400 | Shut | | 3.20 | 4.70 | 3.25 | 2.50 | 1.67 | | | | | |
| | | | Δ P | | 1.00 | 1.36 | 0.82 | 0.54 | 0.37 | | | | | |
| | SUS630 | FN, FV CS | 400 | Shut | | 10.2 | 7.06 | 4.48 | 3.45 | 2.28 | | | | |
| | | | | Δ P | | 2.00 | 1.36 | 0.82 | 0.54 | 0.37 | | | | |
| | HG | 400 | Shut | | 7.70 | 5.16 | 3.25 | 2.50 | 1.67 | | | | | |
| | | | Δ P | | 2.20 | 1.36 | 0.82 | 0.54 | 0.37 | | | | | |
| INCONEL 718 | HG | 400 | Shut | | 11.0 | 5.16 | 3.25 | 2.50 | 1.67 | | | | | |
| | | | Δ P | | 2.93 | 1.36 | 0.82 | 0.54 | 0.37 | | | | | |

表 4-1C H 级阀体 / 6300RC、6400RB 双动作

Table 4-1C H CLASS BODY / 6300RC, 6400RB DOUBLE ACTING TYPE

| 执行机构 型号及尺寸 Actuator code & size | 阀杆材质 Stem material | 密封环 Seal ring | 气源压力 Air SUP. kPa | 用途 Purpose | 填料：柔性石墨 PACKING : GRAFOIL | | | | | | | | |
|--|--------------------------|------------------|-------------------------|---------------|------------------------------|------|------|------|------|------|------|------|------|
| | | | | | 公称通径 Valve size (inch) | | | | | | | | |
| | | | | | 6 | 8 | 10 | 12 | 14 | 16 | 18 | 20 | 24 |
| AT601U 63C6RC | SUS316 | FN, FV CS | 400 | Shut | 2.76 | | | | | | | | |
| | | | | Δ P | 0.60 | | | | | | | | |
| | HG | 400 | Shut | 1.21 | | | | | | | | | |
| | | | Δ P | 0.60 | | | | | | | | | |
| | SUS630 | FN, FV CS, KS | 400 | Shut | 2.76 | | | | | | | | |
| | | | | Δ P | 0.60 | | | | | | | | |
| | HG | 400 | Shut | 1.21 | | | | | | | | | |
| | | | Δ P | 0.60 | | | | | | | | | |
| INCONEL 718 | HG | 400 | Shut | 1.21 | | | | | | | | | |
| | | | | Δ P | 0.60 | | | | | | | | |
| AT651U 63CERC | SUS316 | FN, FV CS | 400 | Shut | 5.97 | 2.82 | | | | | | | |
| | | | | Δ P | 1.27 | 0.53 | | | | | | | |
| | HG | 400 | Shut | 3.68 | 1.57 | | | | | | | | |
| | | | Δ P | 1.27 | 0.53 | | | | | | | | |
| | SUS630 | FN, FV CS, KS | 400 | Shut | 5.97 | 2.82 | | | | | | | |
| | | | | Δ P | 1.27 | 0.53 | | | | | | | |
| | HG | 400 | Shut | 3.68 | 1.57 | | | | | | | | |
| | | | Δ P | 1.27 | 0.53 | | | | | | | | |
| INCONEL 718 | HG | 400 | Shut | 3.68 | 1.57 | | | | | | | | |
| | | | | Δ P | 1.27 | 0.53 | | | | | | | |
| AT701U 63C7RC | SUS316 | FN, FV CS | 400 | Shut | 6.30 | 4.30 | 1.43 | | | | | | |
| | | | | Δ P | 1.60 | 0.86 | 0.27 | | | | | | |
| | HG | 400 | Shut | 4.00 | 2.70 | 0.69 | | | | | | | |
| | | | Δ P | 1.60 | 0.86 | 0.27 | | | | | | | |
| | SUS630 | FN, FV CS, KS | 400 | Shut | 9.55 | 4.65 | 1.43 | | | | | | |
| | | | | Δ P | 2.00 | 0.86 | 0.27 | | | | | | |
| | HG | 400 | Shut | 5.00 | 3.00 | 0.69 | | | | | | | |
| | | | Δ P | 2.02 | 0.86 | 0.27 | | | | | | | |
| INCONEL 718 | HG | 400 | Shut | 5.00 | 3.00 | 0.69 | | | | | | | |
| | | | | Δ P | 2.02 | 0.86 | 0.27 | | | | | | |
| 6420RB 200×4 | SUS316 | FN, FV CS | 400 | Shut | | | 5.50 | 4.80 | 3.60 | 3.57 | 2.64 | 2.05 | 1.16 |
| | | | | Δ P | | | 1.30 | 1.10 | 0.70 | 0.66 | 0.48 | 0.36 | 0.20 |
| | HG | 400 | Shut | | | 4.20 | 3.80 | 2.90 | 2.72 | 1.89 | 1.43 | 0.79 | |
| | | | Δ P | | | 1.30 | 1.10 | 0.70 | 0.66 | 0.48 | 0.36 | 0.20 | |
| | SUS630 | FN, FV CS, KS | 400 | Shut | | | 10.5 | 7.01 | 5.41 | 3.57 | 2.64 | 2.05 | 1.16 |
| | | | | Δ P | | | 2.44 | 1.46 | 0.97 | 0.66 | 0.48 | 0.36 | 0.20 |
| | HG | 400 | Shut | | | 5.00 | 5.00 | 4.08 | 2.72 | 1.89 | 1.43 | 0.79 | |
| | | | Δ P | | | 2.00 | 1.46 | 0.97 | 0.66 | 0.48 | 0.36 | 0.20 | |
| INCONEL 718 | HG | 400 | Shut | | | 5.00 | 5.00 | 4.08 | 2.72 | 1.89 | 1.43 | 0.79 | |
| | | | | Δ P | | | 2.44 | 1.46 | 0.97 | 0.66 | 0.48 | 0.36 | 0.20 |
| 6428RB 280×4 | SUS316 | FN, FV CS | 400 | Shut | | | 5.50 | 4.80 | 3.60 | 3.80 | 3.00 | 2.30 | 2.00 |
| | | | | Δ P | | | 1.30 | 1.10 | 0.70 | 0.78 | 0.56 | 0.43 | 0.36 |
| | HG | 400 | Shut | | | 4.20 | 3.80 | 2.90 | 3.10 | 2.50 | 1.70 | 1.60 | |
| | | | Δ P | | | 1.30 | 1.10 | 0.70 | 0.78 | 0.56 | 0.43 | 0.36 | |
| | SUS630 | FN, FV CS, KS | 400 | Shut | | | 10.5 | 10.5 | 8.00 | 8.60 | 6.51 | 5.16 | 3.08 |
| | | | | Δ P | | | 2.00 | 2.00 | 1.60 | 1.58 | 1.15 | 0.86 | 0.50 |
| | HG | 400 | Shut | | | 5.00 | 5.00 | 5.00 | 5.00 | 4.96 | 3.89 | 2.34 | |
| | | | Δ P | | | 3.00 | 2.50 | 1.60 | 1.58 | 1.15 | 0.86 | 0.50 | |
| INCONEL 718 | HG | 400 | Shut | | | 5.00 | 5.00 | 5.00 | 5.00 | 4.96 | 3.89 | 2.34 | |
| | | | | Δ P | | | 4.30 | 3.41 | 2.27 | 1.58 | 1.15 | 0.86 | 0.50 |

表 4-1D H 级阀体 / 7300RB、6500RA 双动作

Table 4-1D H CLASS BODY / 7300RB, 6500RA DOUBLE ACTING TYPE

| 执行机构 型号及尺寸 Actuator code & size | 阀杆材质 Stem material | 密封环 Seal ring | 气源压力 Air SUP. kPa | 用途 Purpose | 填料：柔性石墨 PACKING : GRAFOIL | | | | | | | | | |
|--|--------------------------|------------------|-------------------------|---------------|------------------------------|------|------|------|------|------|------|------|----|--|
| | | | | | 公称通径 Valve size (inch) | | | | | | | | | |
| | | | | | 6 | 8 | 10 | 12 | 14 | 16 | 18 | 20 | 24 | |
| 7323RB 235×2 | SUS316 | FN, FV CS | 400 | Shut | 5.64 | 2.65 | | | | | | | | |
| | | | | Δ P | 1.20 | 0.50 | | | | | | | | |
| | | HG | 400 | Shut | 3.43 | 1.44 | | | | | | | | |
| | | | | Δ P | 1.20 | 0.50 | | | | | | | | |
| | SUS630 | FN, FV CS, KS | 400 | Shut | 5.64 | 2.65 | | | | | | | | |
| | | | | Δ P | 1.20 | 0.50 | | | | | | | | |
| | | HG | 400 | Shut | 3.43 | 1.44 | | | | | | | | |
| | | | | Δ P | 1.20 | 0.50 | | | | | | | | |
| | INCONEL 718 | HG | 400 | Shut | 3.43 | 1.44 | | | | | | | | |
| | | | | | Δ P | 1.20 | 0.50 | | | | | | | |
| 7328RB 280×2 | SUS316 | FN, FV CS | 400 | Shut | 6.30 | 4.30 | 1.82 | | | | | | | |
| | | | | Δ P | 1.60 | 0.95 | 0.35 | | | | | | | |
| | | HG | 400 | Shut | 4.00 | 2.70 | 1.00 | | | | | | | |
| | | | | Δ P | 1.60 | 0.95 | 0.35 | | | | | | | |
| | SUS630 | FN, FV CS | 400 | Shut | 10.5 | 5.48 | 1.82 | | | | | | | |
| | | | | Δ P | 2.00 | 1.01 | 0.35 | | | | | | | |
| | | HG | 400 | Shut | 5.00 | 3.66 | 1.00 | | | | | | | |
| | | | | Δ P | 2.36 | 1.01 | 0.35 | | | | | | | |
| | INCONEL 718 | HG | 400 | Shut | 5.00 | 3.66 | 1.00 | | | | | | | |
| | | | | | Δ P | 2.36 | 1.01 | 0.35 | | | | | | |
| 7337RB 375×2 | SUS316 | FN, FV CS | 400 | Shut | | 4.30 | 5.50 | 3.76 | 2.89 | 1.82 | | | | |
| | | | | Δ P | | 0.95 | 1.15 | 0.67 | 0.45 | 0.29 | | | | |
| | | HG | 400 | Shut | | 2.70 | 4.20 | 2.68 | 2.06 | 1.28 | | | | |
| | | | | Δ P | | 0.95 | 1.15 | 0.67 | 0.45 | 0.29 | | | | |
| | SUS630 | FN, FV CS | 400 | Shut | | 9.80 | 6.07 | 3.76 | 2.89 | 1.82 | | | | |
| | | | | Δ P | | 2.00 | 1.15 | 0.67 | 0.45 | 0.29 | | | | |
| | | HG | 400 | Shut | | 5.00 | 4.38 | 2.68 | 2.06 | 1.28 | | | | |
| | | | | Δ P | | 2.20 | 1.15 | 0.67 | 0.45 | 0.29 | | | | |
| | INCONEL 718 | HG | 400 | Shut | | 5.00 | 4.38 | 2.68 | 2.06 | 1.28 | | | | |
| | | | | | Δ P | | 2.67 | 1.15 | 0.67 | 0.45 | 0.29 | | | |
| 6520RA 200×2 | SUS316 | FN, FV CS | 400 | Shut | 6.30 | 4.30 | 1.93 | | | | | | | |
| | | | | Δ P | 1.60 | 0.95 | 0.37 | | | | | | | |
| | | HG | 400 | Shut | 4.00 | 2.70 | 1.09 | | | | | | | |
| | | | | Δ P | 1.60 | 0.95 | 0.37 | | | | | | | |
| | SUS630 | FN, FV CS, KS | 400 | Shut | 10.5 | 5.71 | 1.93 | | | | | | | |
| | | | | Δ P | 2.00 | 1.05 | 0.37 | | | | | | | |
| | | HG | 400 | Shut | 5.00 | 3.84 | 1.09 | | | | | | | |
| | | | | Δ P | 2.45 | 1.05 | 0.37 | | | | | | | |
| | INCONEL 718 | HG | 400 | Shut | 5.00 | 3.84 | 1.09 | | | | | | | |
| | | | | | Δ P | 2.45 | 1.05 | 0.37 | | | | | | |
| 6528RA 280×2 | SUS316 | FN, FV CS | 400 | Shut | | 4.30 | 5.50 | 4.01 | 3.08 | 1.95 | 1.42 | | | |
| | | | | Δ P | | 0.95 | 1.23 | 0.72 | 0.48 | 0.31 | 0.23 | | | |
| | | HG | 400 | Shut | | 2.7 | 4.2 | 2.88 | 2.21 | 1.39 | 0.93 | | | |
| | | | | Δ P | | 0.95 | 1.23 | 0.72 | 0.48 | 0.31 | 0.23 | | | |
| | SUS630 | FN, FV CS, KS | 400 | Shut | | 10.0 | 6.46 | 4.01 | 3.08 | 1.95 | 1.42 | | | |
| | | | | Δ P | | 2.00 | 1.23 | 0.72 | 0.48 | 0.31 | 0.23 | | | |
| | | HG | 400 | Shut | | 5.00 | 4.69 | 2.88 | 2.21 | 1.39 | 0.93 | | | |
| | | | | Δ P | | 2.20 | 1.23 | 0.72 | 0.48 | 0.31 | 0.23 | | | |
| | INCONEL 718 | HG | 400 | Shut | | 5.00 | 4.69 | 2.88 | 2.21 | 1.39 | 0.93 | | | |
| | | | | | Δ P | | 2.82 | 1.23 | 0.72 | 0.48 | 0.31 | 0.23 | | |

表 4-2B H 级阀体 / 7300RB 单动作型

Table 4-2B H CLASS BODY / 7300RB SPRING RETURN TYPE

| 执行机构 型号及尺寸 Actuator code & size | 阀杆材质 Stem material | 密封环 Seal ring | 气源压力 Air SUP. kPa | 用途 Purpose | 填料：低摩擦型 PACKING : LOW TORQUE TYPE | | | | | | | | | |
|--|--------------------------|------------------|-------------------------|---------------|--------------------------------------|------|------|----|----|----|----|----|----|--|
| | | | | | 公称通径 Valve size (inch) | | | | | | | | | |
| | | | | | 6 | 8 | 10 | 12 | 14 | 16 | 18 | 20 | 24 | |
| 7323RB 235×2 | SUS316 | FN, FV CS | 400 | Shut | 1.43 | | | | | | | | | |
| | | | | Δ P | 0.34 | | | | | | | | | |
| | HG | 400 | Shut | 0.19 | | | | | | | | | | |
| | | | Δ P | 0.34 | | | | | | | | | | |
| | SUS630 | FN, FV CS | 400 | Shut | 1.43 | | | | | | | | | |
| | | | | Δ P | 0.34 | | | | | | | | | |
| | HG | 400 | Shut | 0.19 | | | | | | | | | | |
| | | | Δ P | 0.34 | | | | | | | | | | |
| INCONEL 718 | HG | 400 | Shut | 0.19 | | | | | | | | | | |
| | | | Δ P | 0.34 | | | | | | | | | | |
| 7328RB 280×2 | SUS316 | FN, FV CS | 400 | Shut | 3.32 | 1.55 | | | | | | | | |
| | | | | Δ P | 0.74 | 0.31 | | | | | | | | |
| | HG | 400 | Shut | 1.65 | 0.58 | | | | | | | | | |
| | | | Δ P | 0.74 | 0.31 | | | | | | | | | |
| | SUS630 | FN, FV CS | 400 | Shut | 3.32 | 1.55 | | | | | | | | |
| | | | | Δ P | 0.74 | 0.31 | | | | | | | | |
| | HG | 400 | Shut | 1.65 | 0.58 | | | | | | | | | |
| | | | Δ P | 0.74 | 0.31 | | | | | | | | | |
| INCONEL 718 | HG | 400 | Shut | 1.65 | 0.58 | | | | | | | | | |
| | | | Δ P | 0.74 | 0.31 | | | | | | | | | |
| 7337RB 375×2 | SUS316 | FN, FV CS | 400 | Shut | 7.00 | 4.59 | 1.76 | | | | | | | |
| | | | | Δ P | 1.80 | 0.86 | 0.35 | | | | | | | |
| | HG | 400 | Shut | 4.60 | 2.96 | 0.95 | | | | | | | | |
| | | | Δ P | 1.80 | 0.96 | 0.35 | | | | | | | | |
| | SUS630 | FN, FV CS | 400 | Shut | 9.26 | 4.59 | 1.76 | | | | | | | |
| | | | | Δ P | 1.98 | 0.86 | 0.35 | | | | | | | |
| | HG | 400 | Shut | 5.00 | 2.96 | 0.95 | | | | | | | | |
| | | | Δ P | 1.98 | 0.96 | 0.35 | | | | | | | | |
| INCONEL 718 | HG | 400 | Shut | 5.00 | 2.96 | 0.95 | | | | | | | | |
| | | | Δ P | 1.98 | 0.96 | 0.35 | | | | | | | | |

表 4-2C H 级阀体 / 6300RC、6500RA 单动作型

Table 4-2C H CLASS BODY / 6300RC, 6500RA SPRING RETURN TYPE

| 执行机构 型号及尺寸 Actuator code & size | 阀杆材质 Stem material | 密封环 Seal ring | 气源压力 Air SUP. kPa | 用途 Purpose | 填料：柔性石墨 PACKING : GRAFOIL | | | | | | | | |
|--|--------------------------|------------------|-------------------------|---------------|------------------------------|------|------|------|------|----|----|----|----|
| | | | | | 公称通径 Valve size (inch) | | | | | | | | |
| | | | | | 6 | 8 | 10 | 12 | 14 | 16 | 18 | 20 | 24 |
| AT651U 63CERC | SUS316 | FN, FV CS | 400 | Shut | 1.24 | | | | | | | | |
| | | | | Δ P | 0.28 | | | | | | | | |
| | | HG | 400 | Shut | 0.04 | | | | | | | | |
| | | | | Δ P | 0.28 | | | | | | | | |
| | SUS630 | FN, FV CS | 400 | Shut | 1.24 | | | | | | | | |
| | | | | Δ P | 0.28 | | | | | | | | |
| | | HG | 400 | Shut | 0.04 | | | | | | | | |
| | | | | Δ P | 0.28 | | | | | | | | |
| INCONEL 718 | HG | 400 | Shut | 0.04 | | | | | | | | | |
| | | | Δ P | 0.28 | | | | | | | | | |
| AT701U 63C7RC | SUS316 | FN, FV CS | 400 | Shut | 2.43 | | | | | | | | |
| | | | | Δ P | 0.53 | | | | | | | | |
| | | HG | 400 | Shut | 1.00 | | | | | | | | |
| | | | | Δ P | 0.53 | | | | | | | | |
| | SUS630 | FN, FV CS | 400 | Shut | 2.43 | | | | | | | | |
| | | | | Δ P | 0.53 | | | | | | | | |
| | | HG | 400 | Shut | 1.00 | | | | | | | | |
| | | | | Δ P | 0.53 | | | | | | | | |
| INCONEL 718 | HG | 400 | Shut | 1.00 | | | | | | | | | |
| | | | Δ P | 0.53 | | | | | | | | | |
| 6520RA 200×2 | SUS316 | FN, FV CS | 400 | Shut | 2.06 | | | | | | | | |
| | | | | Δ P | 0.45 | | | | | | | | |
| | | HG | 400 | Shut | 0.67 | | | | | | | | |
| | | | | Δ P | 0.45 | | | | | | | | |
| | SUS630 | FN, FV CS | 400 | Shut | 2.06 | | | | | | | | |
| | | | | Δ P | 0.45 | | | | | | | | |
| | | HG | 400 | Shut | 0.67 | | | | | | | | |
| | | | | Δ P | 0.45 | | | | | | | | |
| INCONEL 718 | HG | 400 | Shut | 0.67 | | | | | | | | | |
| | | | Δ P | 0.45 | | | | | | | | | |
| 6528RA 280×2 | SUS316 | FN, FV CS | 400 | Shut | 6.30 | 3.82 | 1.05 | | | | | | |
| | | | | Δ P | 1.60 | 0.71 | 0.20 | | | | | | |
| | | HG | 400 | Shut | 4.00 | 2.36 | 0.39 | | | | | | |
| | | | | Δ P | 1.60 | 0.71 | 0.20 | | | | | | |
| | SUS630 | FN, FV CS | 400 | Shut | 7.93 | 3.82 | 1.05 | | | | | | |
| | | | | Δ P | 1.68 | 0.71 | 0.20 | | | | | | |
| | | HG | 400 | Shut | 5.00 | 2.36 | 0.39 | | | | | | |
| | | | | Δ P | 1.68 | 0.71 | 0.20 | | | | | | |
| INCONEL 718 | HG | 400 | Shut | 5.00 | 2.36 | 0.39 | | | | | | | |
| | | | Δ P | 1.68 | 0.71 | 0.20 | | | | | | | |
| 6536RA 360×2 | SUS316 | FN, FV CS | 400 | Shut | 6.30 | 4.30 | 3.35 | 1.99 | 1.52 | | | | |
| | | | | Δ P | 1.60 | 0.95 | 0.64 | 0.36 | 0.24 | | | | |
| | | HG | 400 | Shut | 4.00 | 2.7 | 2.22 | 1.25 | 0.95 | | | | |
| | | | | Δ P | 1.60 | 0.95 | 0.64 | 0.36 | 0.24 | | | | |
| | SUS630 | FN, FV CS | 400 | Shut | 10.5 | 8.77 | 3.35 | 1.99 | 1.52 | | | | |
| | | | | Δ P | 2.00 | 1.61 | 0.64 | 0.36 | 0.24 | | | | |
| | | HG | 400 | Shut | 5.00 | 5.00 | 2.22 | 1.25 | 0.95 | | | | |
| | | | | Δ P | 3.71 | 1.61 | 0.64 | 0.36 | 0.24 | | | | |
| INCONEL 718 | HG | 400 | Shut | 5.00 | 5.00 | 2.22 | 1.25 | 0.95 | | | | | |
| | | | Δ P | 3.71 | 1.61 | 0.64 | 0.36 | 0.24 | | | | | |

表 4-2D H 级阀体 / 7300RB 单动作型

Table 4-2D H CLASS BODY / 7300RB SPRING RETURN TYPE

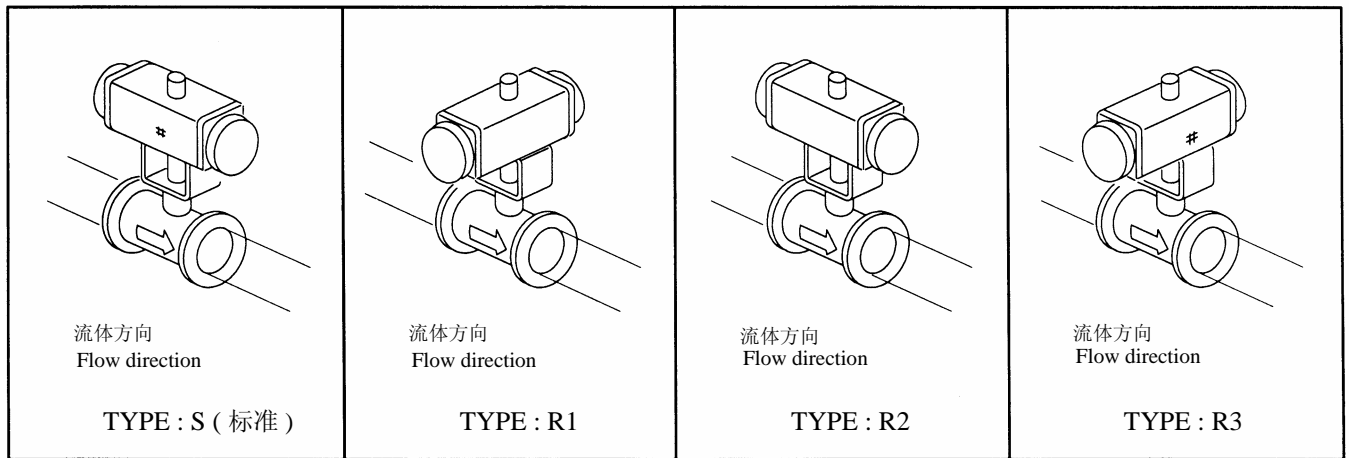
| 执行机构 型号及尺寸 Actuator code & size | 阀杆材质 Stem material | 密封环 Seal ring | 气源压力 Air SUP. kPa | 用途 Purpose | 填料：柔性石墨 PACKING : GRAFOIL | | | | | | | | | |
|--|--------------------------|------------------|-------------------------|---------------|------------------------------|------|------|----|----|----|----|----|----|--|
| | | | | | 公称通径 Valve size (inch) | | | | | | | | | |
| | | | | | 6 | 8 | 10 | 12 | 14 | 16 | 18 | 20 | 24 | |
| 7328RB 285×2 | SUS316 | FN, FV CS | 400 | Shut | 2.45 | | | | | | | | | |
| | | | | Δ P | 0.53 | | | | | | | | | |
| | | HG | 400 | Shut | 0.97 | | | | | | | | | |
| | | | | Δ P | 0.53 | | | | | | | | | |
| | SUS630 | FN, FV CS, KS | 400 | Shut | 2.45 | | | | | | | | | |
| | | | | Δ P | 0.53 | | | | | | | | | |
| | | HG | 400 | Shut | 0.97 | | | | | | | | | |
| | | | | Δ P | 0.53 | | | | | | | | | |
| | INCONEL 718 | FN, FV CS | 400 | Shut | 2.45 | | | | | | | | | |
| | | | | Δ P | 0.53 | | | | | | | | | |
| | | HG | 400 | Shut | 0.97 | | | | | | | | | |
| | | | | Δ P | 0.53 | | | | | | | | | |
| 7337RB 375×2 | SUS316 | FN, FV CS | 400 | Shut | 6.30 | 4.05 | 1.16 | | | | | | | |
| | | | | Δ P | 1.60 | 0.75 | 0.22 | | | | | | | |
| | | HG | 400 | Shut | 4.00 | 2.54 | 0.47 | | | | | | | |
| | | | | Δ P | 1.60 | 0.75 | 0.22 | | | | | | | |
| | SUS630 | FN, FV CS, KS | 400 | Shut | 8.39 | 4.05 | 1.16 | | | | | | | |
| | | | | Δ P | 1.78 | 0.75 | 0.22 | | | | | | | |
| | | HG | 400 | Shut | 5.00 | 2.54 | 0.47 | | | | | | | |
| | | | | Δ P | 1.78 | 0.75 | 0.22 | | | | | | | |
| | INCONEL 718 | HG | 400 | Shut | 5.00 | 2.54 | 0.47 | | | | | | | |
| | | | | Δ P | 1.78 | 0.75 | 0.22 | | | | | | | |

图 4 安装方位

Fig. 4 MOUNTING FORMS

图 4-1 6300RC

Fig. 4-1 6300RC

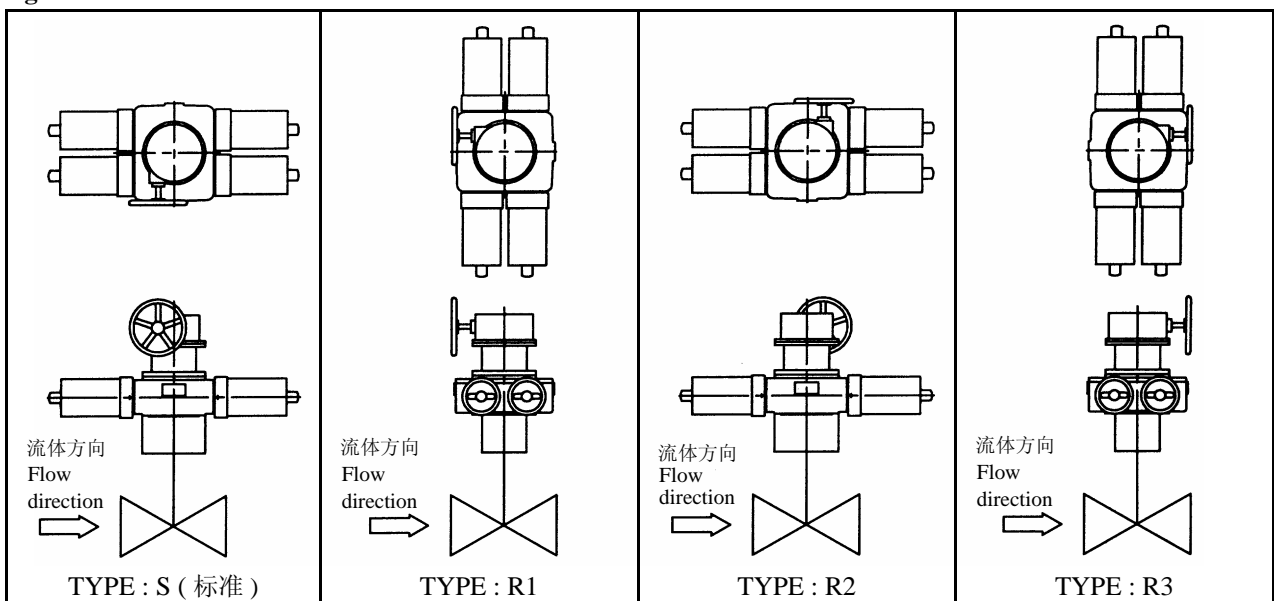


注) 安装位置为非标准时, 请指定安装位置的形式 (TYPE)。

NOTE : Type S is automatically applied, unless otherwise specified.

图 4-2 6400RB

Fig. 4-2 6400RB

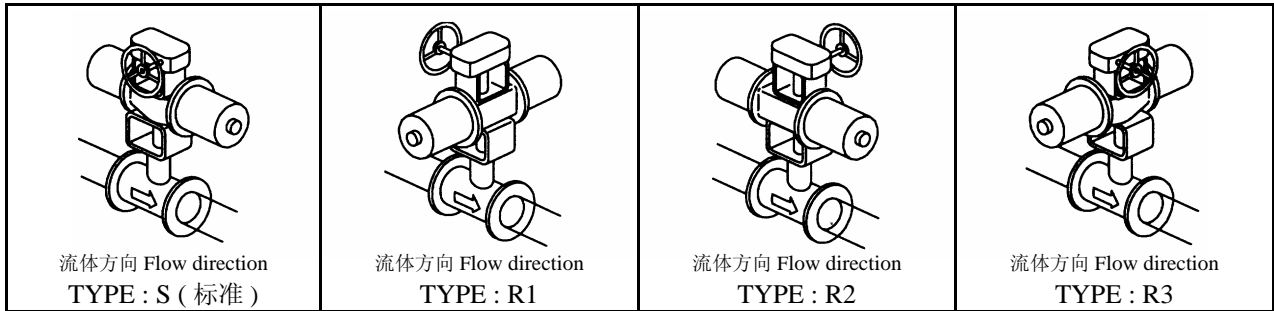


注) 安装位置为非标准时, 请指定安装位置的形式 (TYPE)。

Note : Type S is automatically applied, unless otherwise specified.

图 4-3 6500RA (双动作型)

Fig. 4-3 6500RA (Double acting type)

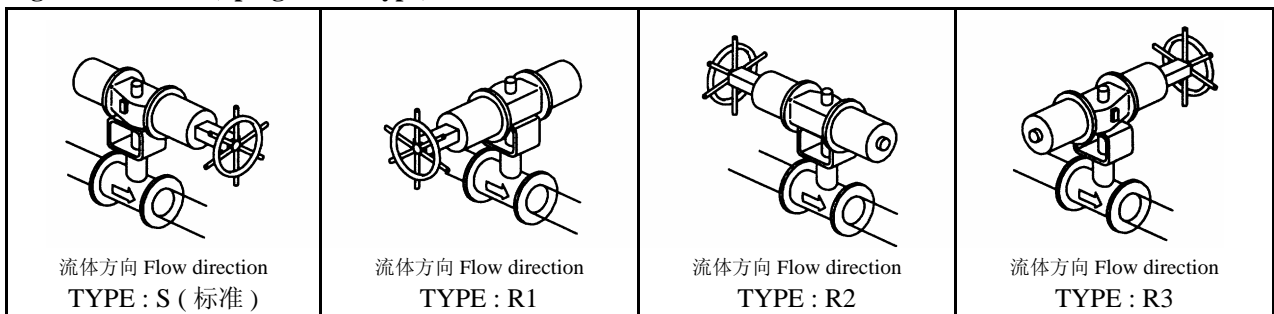


注) 安装位置为非标准时, 请指定安装位置的形式 (TYPE)。

Note : Type S is automatically applied, unless otherwise specified.

图 4-4 6500RA (单动作型)

Fig. 4-4 6500RA (Sping return type)

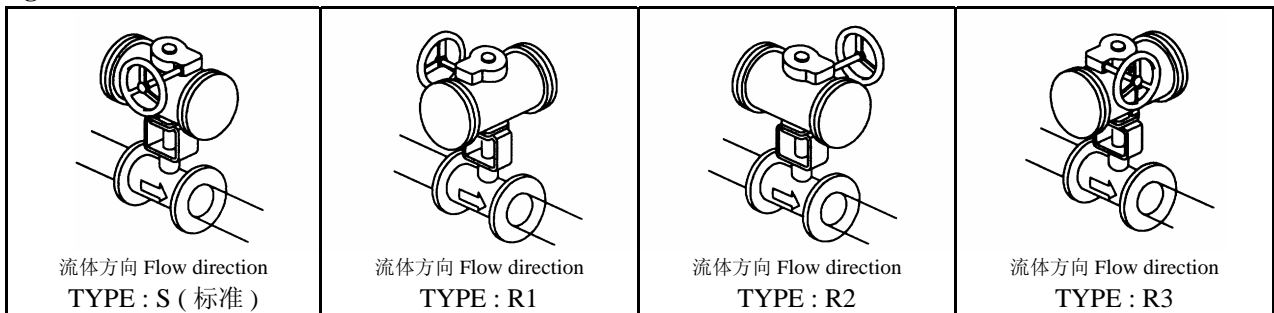


注) 安装位置为非标准时, 请指定安装位置的形式 (TYPE)。

Note : Type S is automatically applied, unless otherwise specified.

图 4-5 7300RB

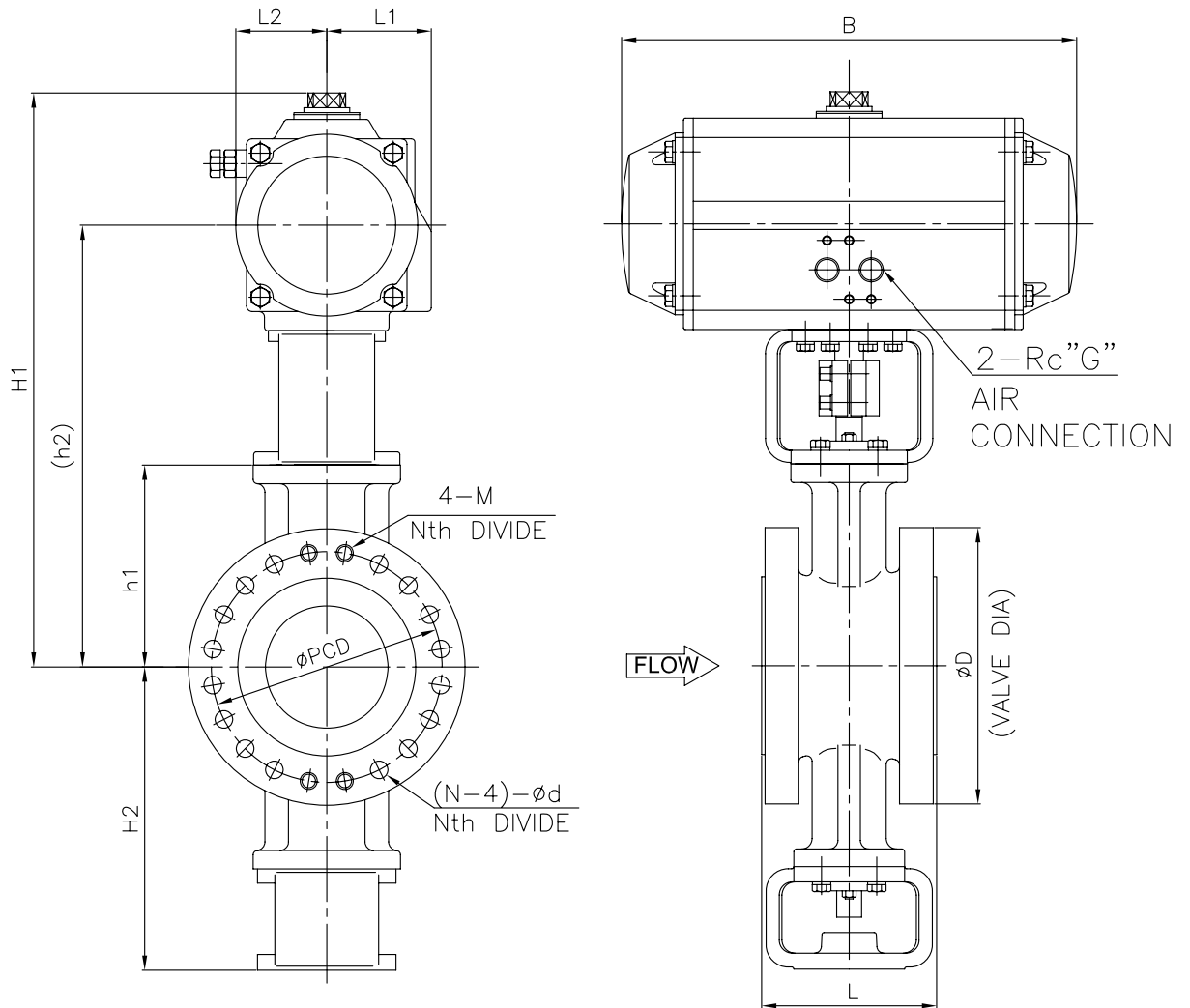
Fig. 4-5 7300RB



注) 安装位置为非标准时, 请指定安装位置的形式 (TYPE)。

Note : Type S is automatically applied, unless otherwise specified.

PARA-SEAL Double acting cylinder



DIMENSIONS

UNIT:mm

| VALVE SIZE | | H Class Body ANSI Class 600 | | | | | | | | | | | ACTUATOR | | | | | |
|------------|--------------|-----------------------------|-----|-----|-----|-----|-----|------|-----------|----|----|-------|---------------|-----|-------|-----|-----|----------|
| | | RF | RTJ | D | h1 | H2 | h2 | H1 | M | N | d | PCD | Cylinder Size | B | L1 | L2 | G | CODE NO. |
| CODE NO. | | L | L | | | | | | | | | | | | | | | |
| 06 | □ 6" (150A) | 267 | 270 | 356 | 295 | 430 | 630 | 805 | 1UNC | 12 | 29 | 292 | □ AT601U | 528 | 111.5 | 110 | 1/4 | 63C6RC |
| | | | | | | | 660 | 855 | | | | | □ AT651U | 605 | 131 | 131 | 3/8 | 63CERC |
| | | | | | | | 670 | 885 | | | | | □ AT701U | 710 | 165 | 165 | 1/2 | 63C7RC |
| 08 | □ 8" (200A) | 292 | 295 | 419 | 330 | 480 | 710 | 905 | 1-1/8-8UN | 12 | 32 | 349.2 | □ AT651U | 605 | 131 | 131 | 3/8 | 63CERC |
| | | | | | | | 720 | 935 | | | | | □ AT701U | 710 | 165 | 165 | 1/2 | 63C7RC |
| 10 | □ 10" (250A) | 330 | 333 | 510 | 375 | 580 | 815 | 1030 | 1-1/4-8UN | 16 | 35 | 431.8 | □ AT701U | 710 | 165 | 165 | 1/2 | 63C7RC |

NOTE:

DRAWING No.

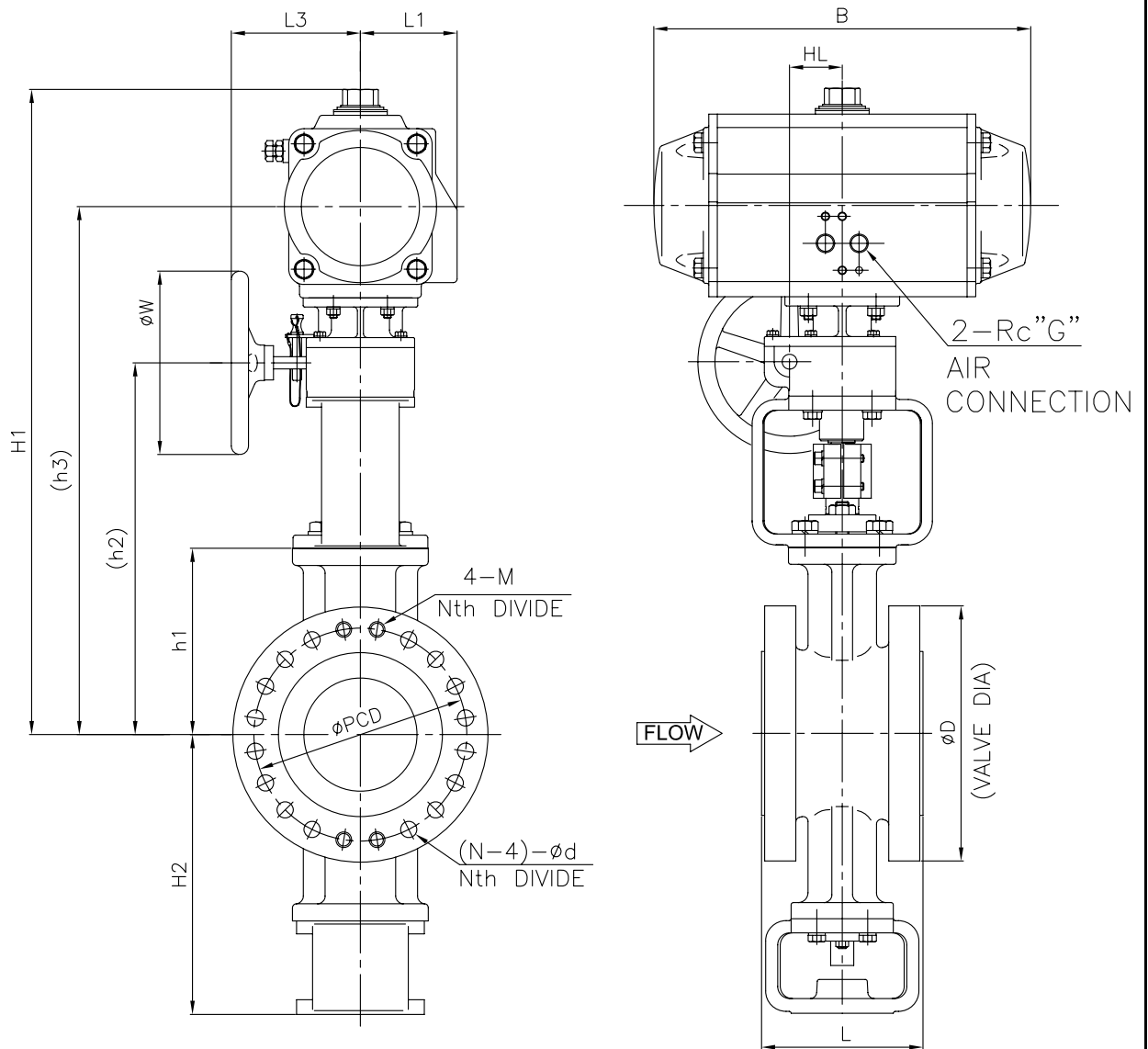
E-720C-6300RC-W-N

REV.

A

KOSO

PARA-SEAL Double acting cylinder With Side handle



DIMENSIONS

UNIT:mm

| CODE NO. | VALVE SIZE | H Class Body ANSI Class 600 | | | | | | | | | | | ACTUATOR | | | | | | | | |
|----------|------------|-----------------------------|-------|-----|-----|-----|-----|------|------|-----------|----|----|----------|---------------------------------|-----|-------|-----|-----|-----|-----|----------|
| | | RF L | RTJ L | D | h1 | H2 | h2 | h3 | H1 | M | N | d | PCD | Cylinder Size | B | L1 | L3 | HL | W | G | CODE NO. |
| 06 | 6" (150A) | 267 | 270 | 356 | 295 | 430 | 560 | 775 | 950 | 1UNC | 12 | 29 | 292 | <input type="checkbox"/> AT601U | 528 | 111.5 | 220 | 90 | 300 | 1/4 | 63C6RC |
| | | | | | | | 605 | 860 | 1060 | | | | | <input type="checkbox"/> AT651U | 605 | 131 | 355 | 106 | 400 | 3/8 | 63CERC |
| | | | | | | | 605 | 875 | 1090 | | | | | <input type="checkbox"/> AT701U | 710 | 185 | 355 | 106 | 400 | 1/2 | 63C7RC |
| 08 | 8" (200A) | 292 | 295 | 419 | 330 | 480 | 655 | 910 | 1110 | 1-1/8-8UN | 12 | 32 | 349.2 | <input type="checkbox"/> AT651U | 605 | 131 | 355 | 106 | 400 | 3/8 | 63CERC |
| | | | | | | | 655 | 925 | 1140 | | | | | <input type="checkbox"/> AT701U | 710 | 185 | 355 | 106 | 400 | 1/2 | 63C7RC |
| 10 | 10" (250A) | 330 | 333 | 510 | 375 | 580 | 730 | 1000 | 1215 | 1-1/4-8UN | 16 | 35 | 431.8 | <input type="checkbox"/> AT701U | 710 | 185 | 355 | 106 | 400 | 1/2 | 63C7RC |

NOTE:

DRAWING No.

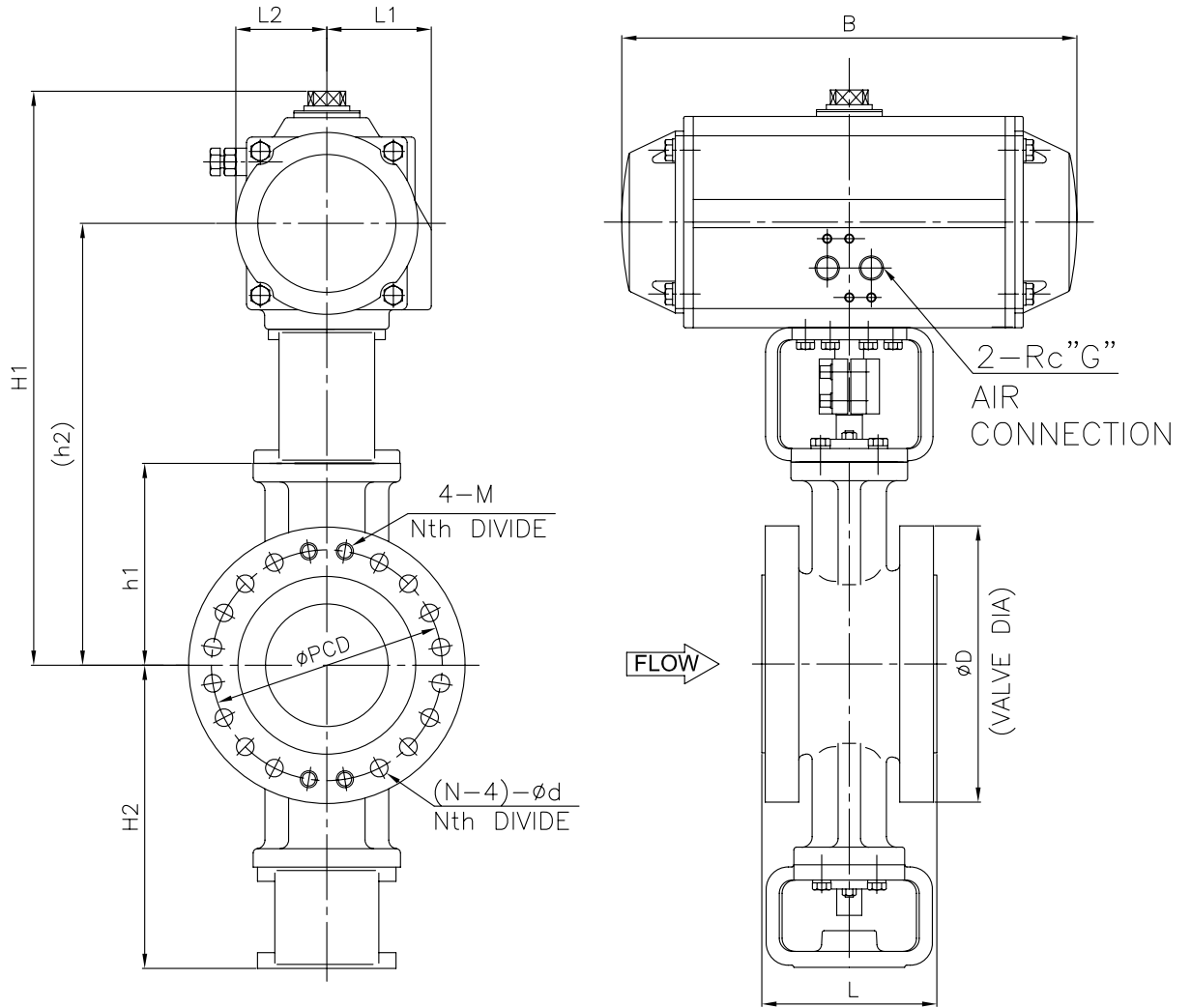
E-720C-6300RC-W-S

REV.

A

KOSO

PARA-SEAL Spring return cylinder



DIMENSIONS

UNIT:mm

| VALVE SIZE | | H Class Body ANSI Class 600 | | | | | | | | | | | ACTUATOR | | | | | |
|------------|-----------|-----------------------------|-----|-----|-----|-----|-----|-----|-----------|----|----|-------|---------------------------------|-----|-----|-----|-----|----------|
| | | RF | RTJ | D | h1 | H2 | h2 | H1 | M | N | d | PCD | Cylinder Size | B | L1 | L2 | G | CODE NO. |
| CODE NO. | | L | L | | | | | | | | | | | | | | | |
| 06 | 6" (150A) | 267 | 270 | 356 | 295 | 430 | 660 | 855 | 1UNC | 12 | 29 | 292 | <input type="checkbox"/> AT651U | 605 | 131 | 131 | 3/8 | 63CERC |
| | | | | | | | 670 | 885 | | | | | <input type="checkbox"/> AT701U | 710 | 165 | 165 | 1/2 | 63C7RC |
| 08 | 8" (200A) | 292 | 295 | 419 | 330 | 480 | 720 | 935 | 1-1/8-8UN | 12 | 32 | 349.2 | <input type="checkbox"/> AT701U | 710 | 165 | 165 | 1/2 | 63C7RC |

NOTE:

DRAWING No.

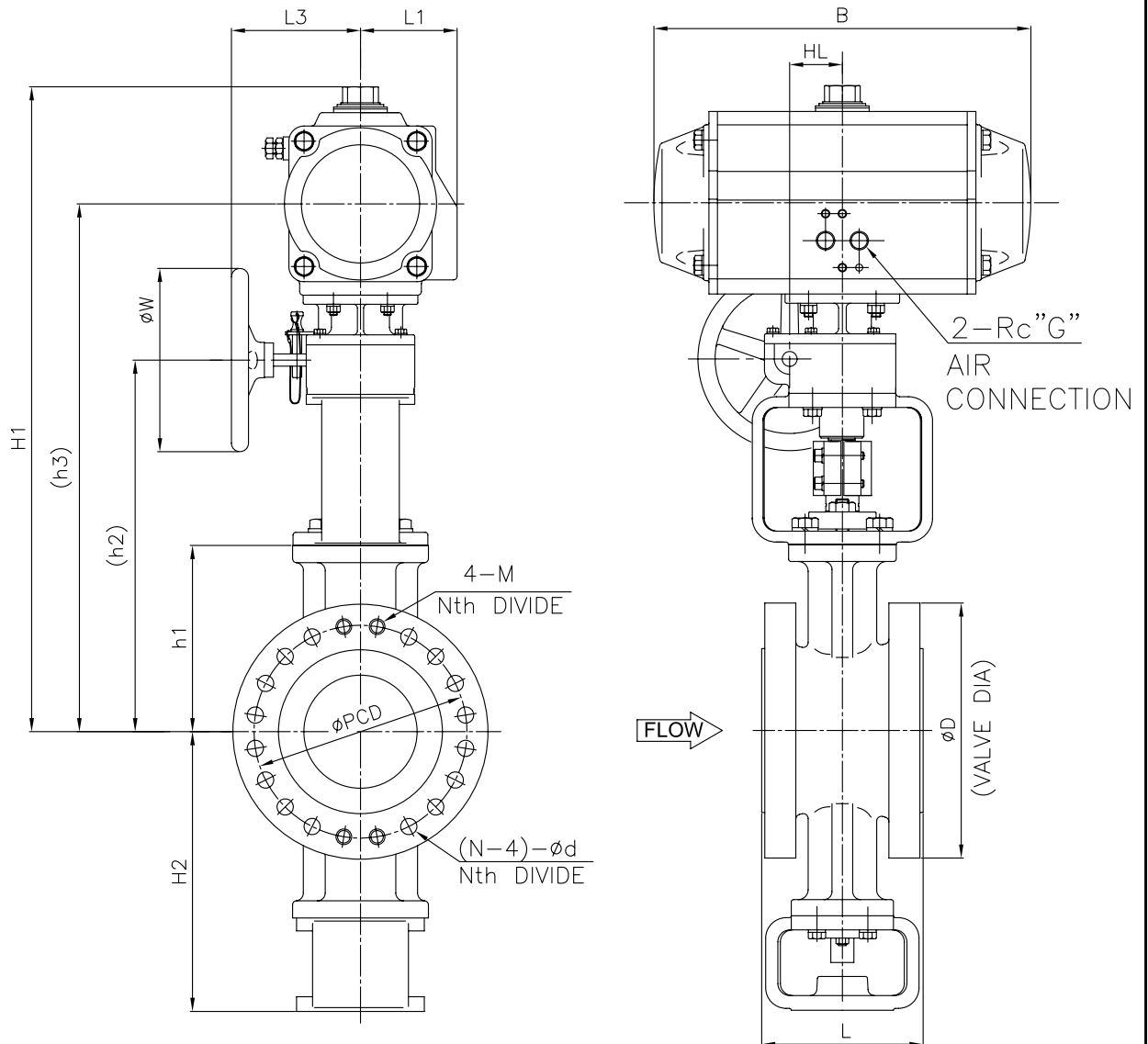
E-720C-6300RC-S-N

REV.

A

KOSO

PARA-SEAL *Spring return cylinder* *With Side handle*



DIMENSIONS

UNIT:mm

| VALVE SIZE | H Class Body ANSI Class 600 | | | | | | | | | | | ACTUATOR | | | | | | | | |
|----------------|-----------------------------|-----|---|----|----|-----|-----|------|-----------|----|----|----------|---------------|-----|-----|-----|-----|-----|-----|----------|
| | RF | RTJ | D | h1 | H2 | h2 | h3 | H1 | M | N | d | PCD | Cylinder Size | B | L1 | L3 | HL | W | G | CODE NO. |
| 06 □ 6" (150A) | L | L | | | | 605 | 860 | 1060 | 1UNC | 12 | 29 | 292 | □ AT651U | 605 | 131 | 355 | 106 | 630 | 3/8 | 63CERC |
| | | | | | | 605 | 875 | 1090 | | | | | □ AT701U | 710 | 185 | 355 | 106 | 630 | 1/2 | 63C7RC |
| 08 □ 8" (200A) | | | | | | 655 | 925 | 1140 | 1-1/8-8UN | 12 | 32 | 349.2 | □ AT701U | 710 | 185 | 355 | 106 | 630 | 1/2 | 63C7RC |

NOTE:

DRAWING No.

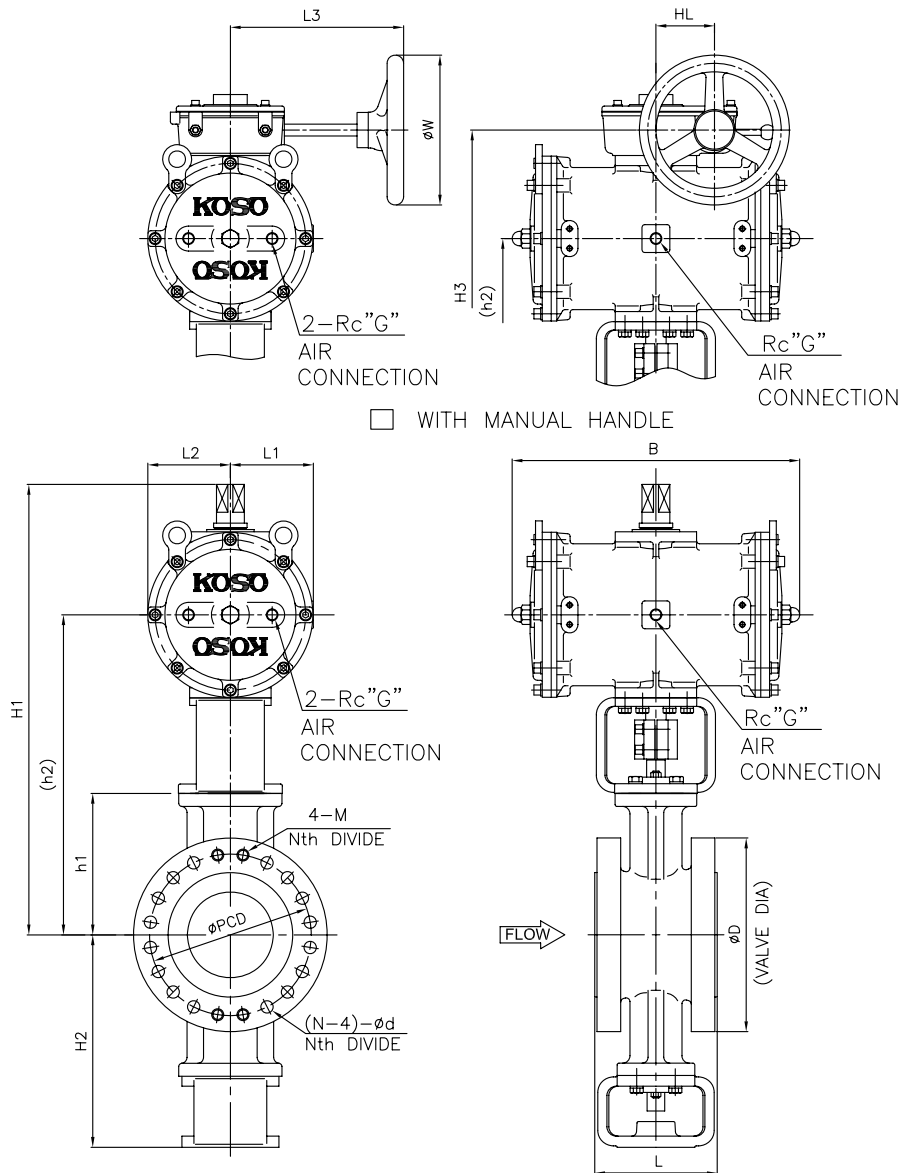
E-720C-6300RC-S-S

REV.

A

KOSO

PARA-SEAL Double acting cylinder



DIMENSIONS

UNIT:mm

| VALVE SIZE | H Class Body ANSI Class 600 | | | | | | | | | | | ACTUATOR | | | | | | | | | | | |
|------------|-----------------------------|---------------|-----|-----|-----|-----|-----|------|------|-----------|-----|---------------|-------|-------|-----|-----|-----|-----|------|-----|----------|-----|--------|
| | RF | RTJ | D | h1 | H2 | h2 | H1 | M | N | d | PCD | Cylinder Size | B | L1 | L2 | L3 | H3 | HL | G | W | CODE NO. | | |
| 06 | □ | 6" (150A) | 267 | 270 | 356 | 295 | 430 | 645 | 880 | 1UNC | 12 | 29 | 292 | □ 235 | 515 | 160 | 150 | 270 | 840 | 93 | 1/2 | 300 | 7323RB |
| | | | | | | | | 690 | 975 | | | | | □ 280 | 630 | 185 | 185 | 315 | 925 | 108 | 1/2 | 400 | 7328RB |
| 08 | □ | 8" (200A) | 292 | 295 | 419 | 330 | 480 | 695 | 930 | 1-1/8-8UN | 12 | 32 | 349.2 | □ 235 | 515 | 160 | 150 | 270 | 890 | 93 | 1/2 | 300 | 7323RB |
| | | | | | | | | 740 | 1025 | | | | | □ 280 | 630 | 185 | 185 | 315 | 975 | 108 | 1/2 | 400 | 7328RB |
| | | | | | | | | 830 | 1200 | | | | | □ 375 | 815 | 240 | 240 | 380 | 1130 | 165 | 3/4 | 630 | 7337RB |
| 10 | □ | 10" (250A) | 330 | 333 | 510 | 375 | 580 | 835 | 1120 | 1-1/4-8UN | 16 | 35 | 431.8 | □ 280 | 630 | 185 | 185 | 315 | 1070 | 108 | 1/2 | 400 | 7328RB |
| | | | | | | | | 905 | 1275 | | | | | □ 375 | 815 | 240 | 240 | 380 | 1205 | 165 | 3/4 | 630 | 7337RB |
| 12 | □ | 12" (300A) | 356 | 359 | 560 | 425 | 630 | 955 | 1325 | 1-1/4-8UN | 20 | 35 | 489 | □ 375 | 815 | 240 | 240 | 380 | 1255 | 165 | 3/4 | 630 | 7337RB |
| 14 | □ | 14" (350A) | 381 | 384 | 605 | 465 | 670 | 995 | 1365 | 1-3/8-8UN | 20 | 38 | 527 | □ 375 | 815 | 240 | 240 | 380 | 1295 | 165 | 3/4 | 630 | 7337RB |
| 16 | □ | 16" (400A) | 406 | 410 | 686 | 530 | 710 | 1090 | 1460 | 1-1/2-8UN | 20 | 41 | 603.2 | □ 375 | 815 | 240 | 240 | 380 | 1390 | 165 | 3/4 | 630 | 7337RB |

NOTE:

DRAWING No.

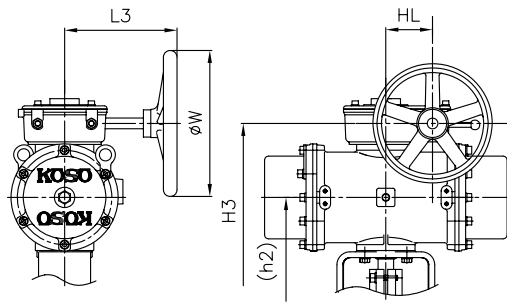
E-720C-7300RB-W-^N/_H

REV.

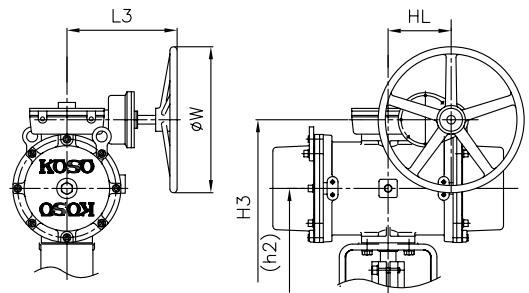
A

KOSO

PARA-SEAL Spring return cylinder

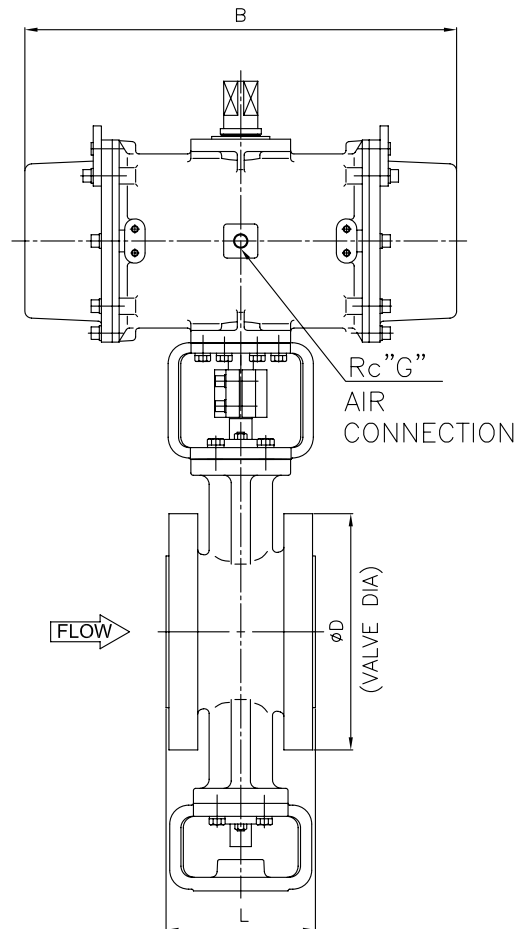
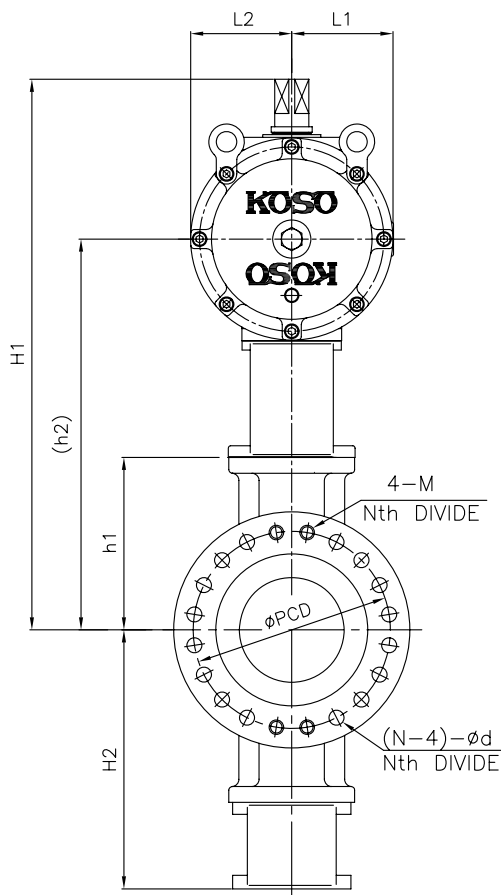


□ ACT.SIZE : 170`280



□ ACT.SIZE : 375

□ WITH MANUAL HANDLE



DIMENSIONS

UNIT:mm

| VALVE SIZE | H Class Body ANSI Class 600 | | | | | | | | | | | ACTUATOR | | | | | | | | | |
|-----------------|-----------------------------|-----|-----|-----|-----|-----|------|-----------|----|----|-------|---------------|-----|-----|-----|-----|------|-----|-----|-----|----------|
| | RF | RTJ | D | h1 | H2 | h2 | H1 | M | N | d | PCD | Cylinder Size | B | L1 | L2 | L3 | H3 | HL | G | W | CODE NO. |
| L | L | | | | | | | | | | | | | | | | | | | | |
| 06 □ 6" (150A) | 267 | 270 | 356 | 295 | 430 | 645 | 880 | 1UNC | 12 | 29 | 292 | □ 235 | 635 | 160 | 150 | 315 | 845 | 108 | 1/2 | 400 | 7323RB |
| | | | | | | 690 | 975 | | | | | □ 280 | 810 | 185 | 185 | 380 | 935 | 165 | 1/2 | 630 | 7328RB |
| | | | | | | 780 | 1150 | | | | | □ 375 | 990 | 240 | 240 | 467 | 1075 | 269 | 3/4 | 630 | 7337RB |
| 08 □ 8" (200A) | 292 | 295 | 419 | 330 | 480 | 740 | 1025 | 1-1/8-8UN | 12 | 32 | 349.2 | □ 280 | 810 | 185 | 185 | 380 | 985 | 165 | 1/2 | 630 | 7328RB |
| | | | | | | 830 | 1200 | | | | | □ 375 | 990 | 240 | 240 | 467 | 1125 | 269 | 3/4 | 630 | 7337RB |
| 10 □ 10" (250A) | 330 | 333 | 510 | 375 | 580 | 905 | 1275 | 1-1/4-8UN | 16 | 35 | 431.8 | □ 375 | 990 | 240 | 240 | 467 | 1200 | 269 | 3/4 | 630 | 7337RB |

NOTE:

DRAWING No.

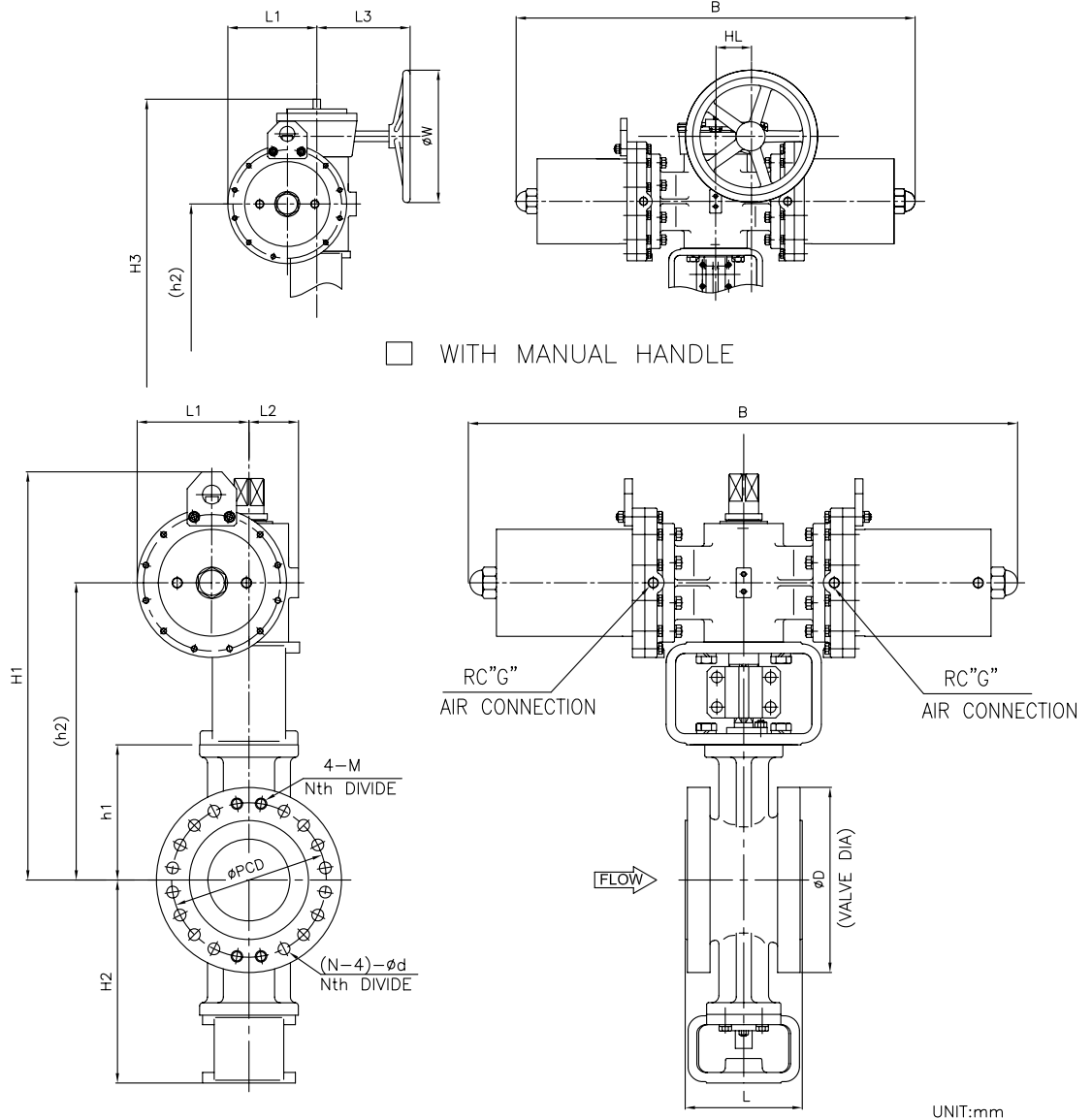
E-720C-7300RB- $\begin{matrix} D-N \\ R-H \end{matrix}$

REV.

A

KOSO

PARA-SEAL Double acting cylinder



DIMENSIONS

UNIT:mm

| VALVE SIZE | | H Class Body ANSI Class 600 | | | | | | | | | | ACTUATOR | | | | | | | | CODE NO. | | |
|------------|-------------------------------------|-----------------------------|-----|-----|-----|-----|------|------|-----------|----|----|----------|------------------------------|------|-----|-----|-----|-------------------|-----|----------|--------|--------|
| | | RF | RTJ | D | h1 | H2 | h2 | H1 | M | N | d | PCD | Cylinder Size | B | L1 | L2 | G | WITH MANUL HANDLE | | | | |
| CODE NO. | | L | L | | | | | | | | | | | | | | | | | | | HL |
| 06 | <input type="checkbox"/> 6" (150A) | 267 | 270 | 356 | 295 | 430 | 625 | 845 | 1UNC | 12 | 29 | 292 | <input type="checkbox"/> 200 | 1110 | 230 | 100 | 1/2 | 108 | 315 | 400 | 795 | 6520RA |
| 08 | <input type="checkbox"/> 8" (200A) | 292 | 295 | 419 | 330 | 480 | 675 | 895 | 1-1/8-8UN | 12 | 32 | 349.2 | <input type="checkbox"/> 200 | 1110 | 230 | 100 | 1/2 | 108 | 315 | 400 | 845 | 6520RA |
| | | | | | | | 750 | 1040 | | | | | 630 | | | | | | | 995 | 6528RA | |
| 10 | <input type="checkbox"/> 10" (250A) | 330 | 333 | 510 | 375 | 580 | 770 | 990 | 1-1/4-8UN | 16 | 35 | 431.8 | <input type="checkbox"/> 200 | 1110 | 230 | 100 | 1/2 | 108 | 315 | 400 | 940 | 6520RA |
| | | | | | | | 825 | 1115 | | | | | 630 | | | | | | | 1070 | 6528RA | |
| 12 | <input type="checkbox"/> 12" (300A) | 356 | 359 | 560 | 425 | 630 | 875 | 1165 | 1-1/4-8UN | 20 | 35 | 489 | <input type="checkbox"/> 280 | 1350 | 290 | 130 | 1/2 | 165 | 380 | 630 | 1120 | 6528RA |
| 14 | <input type="checkbox"/> 14" (350A) | 381 | 384 | 605 | 465 | 670 | 915 | 1205 | 1-3/8-8UN | 20 | 38 | 527 | <input type="checkbox"/> 280 | 1350 | 290 | 130 | 1/2 | 165 | 380 | 630 | 1160 | 6528RA |
| 16 | <input type="checkbox"/> 16" (400A) | 406 | 410 | 686 | 530 | 710 | 1010 | 1300 | 1-1/2-8UN | 20 | 41 | 603.2 | <input type="checkbox"/> 280 | 1350 | 290 | 130 | 1/2 | 165 | 380 | 630 | 1255 | 6528RA |

NOTE:

DRAWING No.

E-720C-6500RA-W-^N/_H

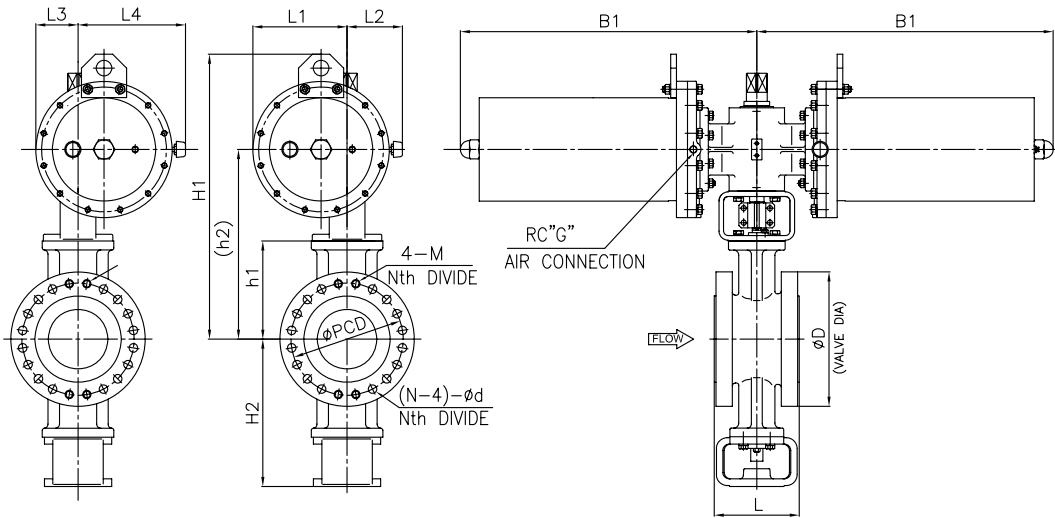
REV.

A

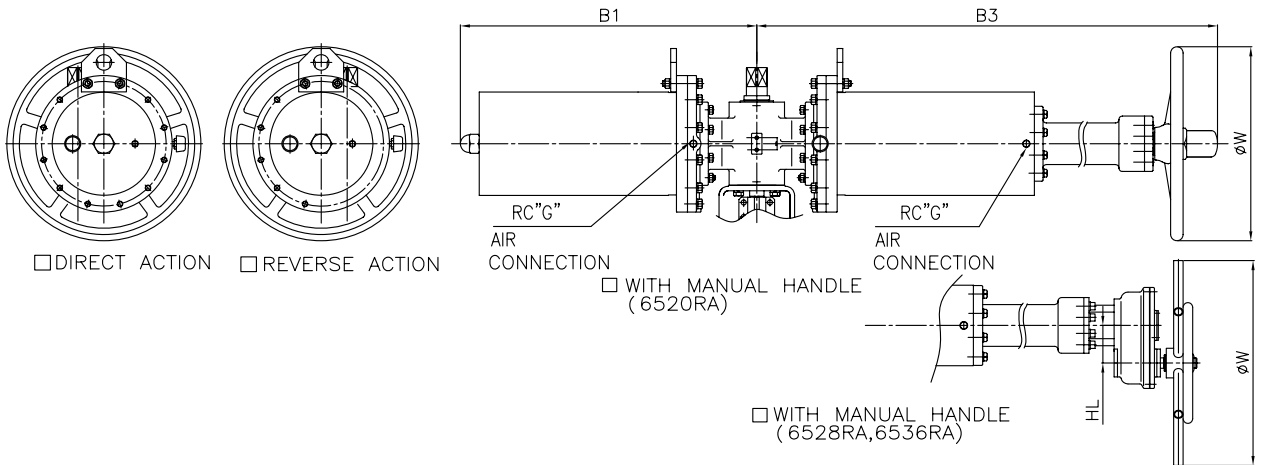
KOSO

PARA-SEAL Spring return cylinder

DIRECT ACTION REVERSE ACTION



WITHOUT MANUAL HANDLE



DIRECT ACTION REVERSE ACTION

WITH MANUAL HANDLE (6520RA)

WITH MANUAL HANDLE (6528RA, 6536RA)

DIMENSIONS

UNIT:mm

| CODE NO. | VALVE SIZE | H Class Body ANSI Class 600 | | | | | | | | | | ACTUATOR | | | | | | | | | | | |
|----------|-------------------------------------|-------------------------------|-----|-----|-----|-----|-----|------|-----------|----|----|----------|------------------------------|------|-----|-----|-----|-----|-----|--|-----|-----|----------|
| | | RF | RTJ | D | h1 | H2 | h2 | H1 | M | N | d | PCD | Cylinder Size | B1 | L1 | L2 | L3 | L4 | G | <input type="checkbox"/> WITH MANUL HANDLE | | | CODE NO. |
| | | L | L | | | | | | | | | | | | | | | | | B3 | HL | W | |
| 06 | <input type="checkbox"/> 6" (150A) | 267 | 270 | 356 | 295 | 430 | 600 | 835 | 1UNC | 12 | 29 | 292 | <input type="checkbox"/> 200 | 770 | 211 | 135 | 91 | 255 | 3/8 | 1330 | — | 400 | 6520RA |
| | | | | | | | 625 | 900 | | | | | <input type="checkbox"/> 280 | 865 | 275 | 165 | 122 | 315 | 1/2 | 1615 | 108 | 590 | 6528RA |
| | | | | | | | 700 | 1030 | | | | | <input type="checkbox"/> 360 | 1070 | 315 | 265 | 135 | 355 | 1/2 | 1990 | 196 | 590 | 6536RA |
| 08 | <input type="checkbox"/> 8" (200A) | 292 | 295 | 419 | 330 | 480 | 645 | 880 | 1-1/8-8UN | 12 | 32 | 349.2 | <input type="checkbox"/> 200 | 770 | 211 | 135 | 91 | 255 | 3/8 | 1330 | — | 400 | 6520RA |
| | | | | | | | 675 | 950 | | | | | <input type="checkbox"/> 280 | 865 | 275 | 165 | 122 | 315 | 1/2 | 1615 | 108 | 590 | 6528RA |
| | | | | | | | 750 | 1080 | | | | | <input type="checkbox"/> 360 | 1070 | 315 | 265 | 135 | 355 | 1/2 | 1990 | 196 | 590 | 6536RA |
| 10 | <input type="checkbox"/> 10" (250A) | 330 | 333 | 510 | 375 | 580 | 770 | 1045 | 1-1/4-8UN | 16 | 35 | 431.8 | <input type="checkbox"/> 280 | 865 | 275 | 165 | 122 | 315 | 1/2 | 1615 | 108 | 590 | 6528RA |
| | | | | | | | 825 | 1155 | | | | | <input type="checkbox"/> 360 | 1070 | 315 | 265 | 135 | 355 | 1/2 | 1990 | 196 | 590 | 6536RA |
| | | | | | | | | | | | | | | | | | | | | | | | |
| 12 | <input type="checkbox"/> 12" (300A) | 356 | 359 | 560 | 425 | 630 | 875 | 1205 | 1-1/4-8UN | 20 | 35 | 489 | <input type="checkbox"/> 360 | 1070 | 315 | 265 | 135 | 355 | 1/2 | 1990 | 196 | 590 | 6536RA |
| | | | | | | | | | | | | | | | | | | | | | | | |
| 14 | <input type="checkbox"/> 14" (350A) | 381 | 384 | 605 | 465 | 670 | 915 | 1245 | 1-3/8-8UN | 20 | 38 | 527 | <input type="checkbox"/> 360 | 1070 | 315 | 265 | 135 | 355 | 1/2 | 1990 | 196 | 590 | 6536RA |
| | | | | | | | | | | | | | | | | | | | | | | | |

NOTE:

DRAWING No.

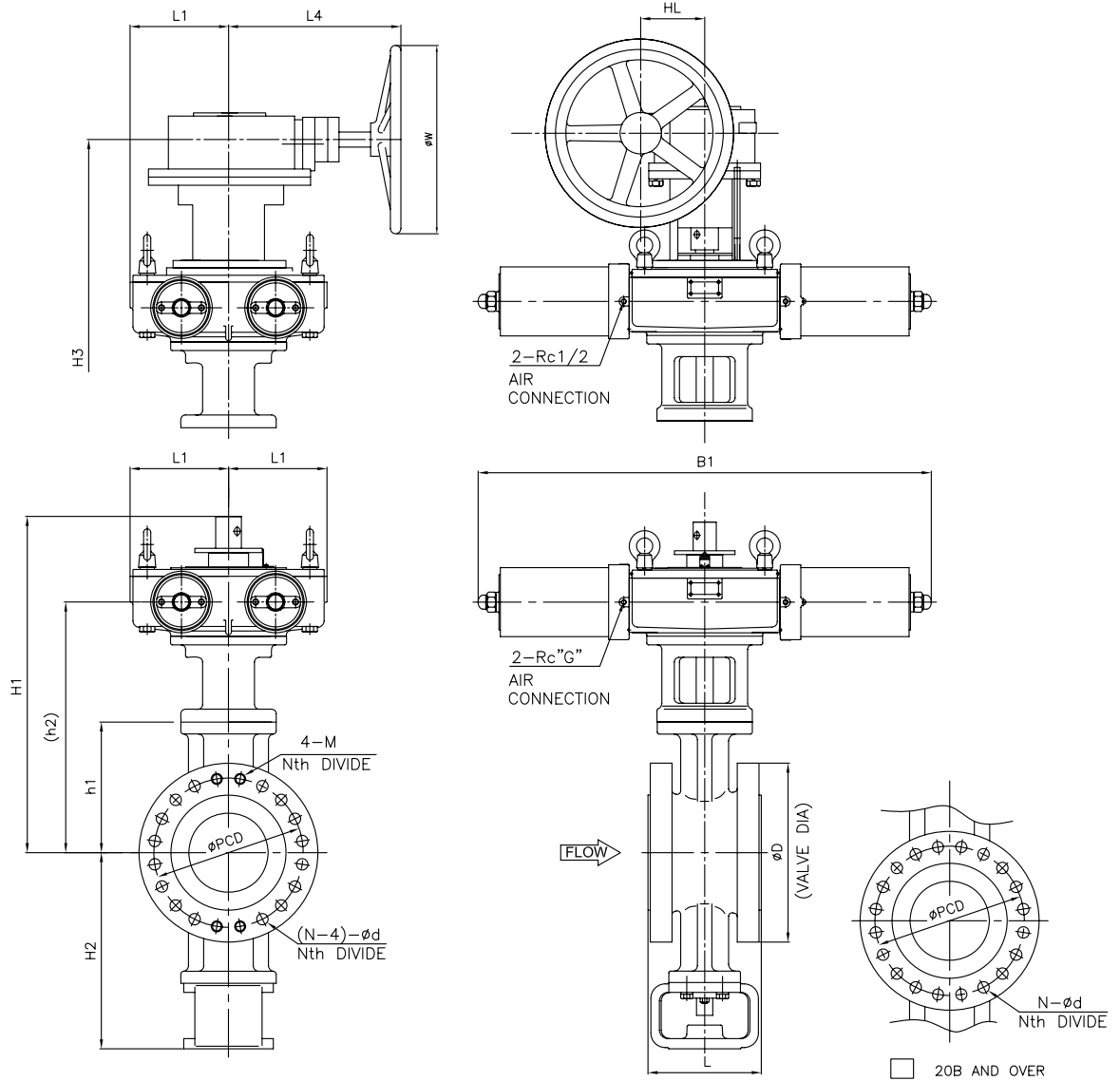
E-720C-6500RA- $\begin{matrix} D & N \\ R & S \end{matrix}$

REV.

A

KOSO

PARA-SEAL Double acting cylinder



DIMENSIONS

UNIT:mm

| VALVE SIZE | H Class Body ANSI Class 600 | | | | | | | | | | | ACTUATOR | | | | | | | |
|-----------------|-----------------------------|-----|-----|-----|-----|------|------|-----------|----|----|-------|---------------|------|-----|------|-----|-----|-----|----------|
| | RF | RTJ | D | h1 | H2 | h2 | H1 | M | N | d | PCD | Cylinder Size | B1 | L1 | H3 | L4 | HL | W | CODE NO. |
| L | L | | | | | | | | | | | | | | | | | | |
| 10 □ 10" (250A) | 330 | 333 | 510 | 375 | 580 | 795 | 1100 | 1-1/4-8UN | 16 | 35 | 431.8 | □ 200 | 1690 | 345 | 1335 | 455 | 196 | 460 | 6420RB |
| | | | | | | 820 | 1150 | | | | | □ 280 | 1980 | 395 | 1395 | 550 | 275 | 560 | 6428RB |
| 12 □ 12" (300A) | 356 | 359 | 560 | 425 | 630 | 845 | 1150 | 1-1/4-8UN | 20 | 35 | 489 | □ 200 | 1690 | 345 | 1385 | 455 | 196 | 460 | 6420RB |
| | | | | | | 870 | 1200 | | | | | □ 280 | 1980 | 395 | 1445 | 550 | 275 | 560 | 6428RB |
| 14 □ 14" (350A) | 381 | 384 | 605 | 465 | 670 | 885 | 1190 | 1-3/8-8UN | 20 | 38 | 527 | □ 200 | 1690 | 345 | 1425 | 455 | 196 | 460 | 6420RB |
| | | | | | | 910 | 1240 | | | | | □ 280 | 1980 | 395 | 1485 | 550 | 275 | 560 | 6428RB |
| 16 □ 16" (400A) | 406 | 410 | 686 | 530 | 710 | 950 | 1255 | 1-1/2-8UN | 20 | 41 | 603.2 | □ 200 | 1690 | 345 | 1490 | 455 | 196 | 460 | 6420RB |
| | | | | | | 975 | 1305 | | | | | □ 280 | 1980 | 395 | 1550 | 550 | 275 | 560 | 6428RB |
| 18 □ 18" (450A) | 432 | 436 | 745 | 600 | 780 | 1020 | 1325 | 1-5/8-8UN | 20 | 44 | 654 | □ 200 | 1690 | 345 | 1560 | 455 | 196 | 460 | 6420RB |
| | | | | | | 1045 | 1375 | | | | | □ 280 | 1980 | 395 | 1620 | 550 | 275 | 560 | 6428RB |
| 20 □ 20" (500A) | 457 | 463 | 815 | 620 | 800 | 1040 | 1345 | — | 24 | 44 | 723.9 | □ 200 | 1690 | 345 | 1580 | 455 | 196 | 460 | 6420RB |
| | | | | | | 1065 | 1400 | | | | | □ 280 | 1980 | 395 | 1640 | 550 | 275 | 560 | 6428RB |
| 24 □ 24" (600A) | 508 | 517 | 940 | 650 | 830 | 1070 | 1375 | — | 24 | 51 | 838.2 | □ 200 | 1690 | 345 | 1610 | 455 | 196 | 460 | 6420RB |
| | | | | | | 1095 | 1425 | | | | | □ 280 | 1980 | 395 | 1670 | 550 | 275 | 560 | 6428RB |

NOTE:

DRAWING No.

E-720C-6400RB-W-^N/_H

REV.

A

KOSO