

# 511G 高压套筒导向型角阀

## High-Pressure Cage Guided Angle Valves

**概要**

流体压力平衡阀芯型高压套筒导向型角阀是一种大容量、动态稳定性优良、适合苛刻工况条件的高性能调节阀。由于具有使作用在阀芯上的流体压力平衡的结构，因此只须用较小的操作力便可达到稳定调节，能够承受较高的工作压差。

**GENERAL**

This series is our latest high pressure cage guided angle valve of large Cv value, and of dynamic stability. It is suitable to a variety of heavy duty services. This series is characterized by pressure balanced type trim for very high pressure drops.

**标准规格 STANDARD SPECIFICATIONS**

**本体部 BODY**

形 式 Type	流体压力平衡型阀芯	Pressure balanced plug type
公称口径 Body size	1.5"~12" (40A~300A 即 DN40~DN300)	
阀芯形状 Plug form	流体压力平衡型阀芯	Pressure balanced plug type
流量特性 Characteristics	线性、等百分比 Linear, Equal percentage	
阀内件材质 Trim materials 阀内件处理 Trim treatment	标准材质组合及使用温度，请参见表 1。 See Tables 1 for hardening treatment and operating temperature.	
公称压力 Body rating	ANSI Class 900、1500、2500	
连接方式 Body connections	法兰型 (RF、RTJ)，焊接型 (SW、BW) Flanged (RF、RTJ)，Weld ends (SW、BW)	
法 兰 距 Face to Face dimension	请参见第 12~21 页。 See pages 12~21.	
阀 体 及 上 阀 盖 材 质 Body & Bonnet Material	SCPH2/WCB/ A105, SCPH21/WC6/ A182-F11, SCPH32/WC9/ A182-F22, SCPL1/LCB, SCS13A/CF8/ SUSF304, SCS14A /CF8M/SUSF316 各种材质的使用温度・压力范围，请参见表 1，表 2。 As to the operating pressure-temperature limitation for each material, see Tables 1 and 2.	
上 阀 盖 形 式 Bonnet type	标准型 Standard type : -5~+230℃ 散热片型 Fin-Extension type : -45~-5℃或者超过 230℃の場合 -45~under -5℃ or over +230℃ 加长型 Long-Extension type : -196~-45℃ 但必须注意各材质的使用温度・压力范围。 Note : The allowable operating pressure-temperature limitation for each material.	
填 料 Packing	聚四氟乙烯碳纤维、柔性石墨。 各种填料的使用温度・压力范围，请参见图 2。 Teflon fiber, Grafoil, See Fig. 2 for selection.	
垫 圈 Gasket	缠绕式垫圈 (聚四氟乙烯 / SUS316、柔性石墨 / SUS316) 各种垫圈的使用温度・压力范围，请参见图 3。 Spiral wound metal, with Grafoil or Teflon filler. See Fig. 3 for selection.	
表面涂层色 Painting color	银灰色 (环氧树脂)。但是阀体材质为不锈钢时，本体部不加涂层。 Munsell N-6 (Epoxy resin group) is standard. In the case of stainless steel body, no painting is standard.	

**执行机构 ACTUATOR**

规格 Specification	型号 Type	气动薄膜式 Diaphragm type	气缸式 Pneumatic Cylinder type
		5200LA	6300LA
		多弹簧型 Multi-spring type	双动作型 Double acting type
用途 Purpose		调节 Modulation	调节、开关 Modulation or On-off
供气压力 (弹簧范围) Air supply (Spring range)		300 (80~200) KPa G	300~500 KPa G
接口 Connection		Rc1/4, Rc3/8 (φ650)	Rc3/8(气缸尺寸 Cylinder size : 200), Rc1/2(300, 450), Rc3/4(600)
正作用 Direct action		气压增加关闭 Air to valve shut	随输入定位器信号增加阀开或关闭。 Valve open or shut by air or electric signal.
反作用 Reverse action		气压增加阀开 Air to valve open	
滞后 Hysteresis		≤1% FS (带定位器) ≤1% of FS with positioner	≤1% FS (带定位器) ≤1% of FS with positioner
直线性 Linearity		≤±2% FS (带定位器) ≤±2% of FS with positioner	≤±2% FS (带定位器) ≤±2% of FS with positioner
允许环境温度 Ambient Temp.		标准型 Standard type .....-10~+70℃ 高温型 High Temp.service .....0~+100℃ 低温型 Low Temp. service .....-40~+40℃	标准型 Standard type .....-20~+60℃ 高温型 High Temp.service .....0~+100℃ 低温型 Low Temp. service .....-50~+60℃
标准涂层色 Painting		银色环氧树脂 Munsell : N-6	银色环氧树脂 Munsell : N-6
选购设备 Option	E/P·P/P 定位器、过滤减压阀、电磁阀、限位开关、调速器、锁止阀、手动操作机构。 E/P·P/P-Positioner, Air-set, Solenoid valve, Limit switch, Speed controller, Lock valve, Lock-up valve, Manual handle, etc.		

**性能 PERFORMANCE**

额定 Cv 值 Rated Cv	请参见表 3。 See Table 3.
流量特性 Flow characteristics	线性、等百分比 Linear, Equal percentage
可调比 R Rangeability	50 : 1
阀座泄漏量 Seat Leakage	请参见表 1。 See Table 1. (可选用 Option : ANSI CLASS V)
允许压差 Allowable pressure drops	请参见表 4。 See Table 4.

**特殊规格 (有償) OPTIONAL SPECIAL SPECIFICATIONS ( additional cost is required)**

本体部特殊检查 Special testing for Body	材料检查 {液体渗透探伤检查 (PT)、放射线检查 (RT)}、流量特性检查、低温试验、蒸汽试验 Material certificate, Liquid penetrant testing, Radiographic testing, Flow characteristic testing, Low temperature testing, Steam testing.
本体部特殊清洗 Special cleaning for Body	完全禁油、除水处理 Oxygen clean, Oil-free, Water-free
本体部及执行机构特殊规格 Special specification for Body and Actuator	防砂、防尘型、防盐腐蚀型、寒冷地区用、热带地区用、无铜处理、特殊空气配管及特殊气接头、真空工作条件用、接触大气部分的螺栓、螺母采用不锈钢、指定涂层色 Sand and Dust proof, Salty environment proof, Cold area proof, Tropical area proof Copper-free alloy, Special piping and fitting, Vacuum service proof, SUS bolt and nut for exposed parts, Non-standard painting.
认证 Authorization	获得高压气体认定法的认定 Japanese government authorization for high pressure gas.

**表 1 阀体、阀内件材质组合及使用温度范围·阀座允许泄漏量**

**Table 1 BODY/TRIM STANDARD MATERIAL COMBINATION, OPERATING TEMPERATURE AND SEAT LEAKAGE.**

- ① 当阀座泄漏率要达到 ANSI CLASS V 时, 请与 KOSO 确认。
- ② 如可能发生空化气蚀, 请研究选用防空化气蚀的调节阀。
- ③ 如可能发生闪蒸, 请选用缩腔型, 阀芯及阀座表面全部堆焊司太莱合金。
- ① When ANSI CLASS V for seat leakage is required, please consult us.
- ② In the case of cavitation service, we recommend our anti-cavitation control valves.
- ③ In the case of flashing service, we recommend reduced bore and stellite full surface of plug and seat ring.
- R.TFE : 强化聚四氟乙烯 Reinforced Teflon                      ● HT : 热处理 Heat treatment
- Hcr : 镀硬铬 Hard chrome plated                                      ● SS : 部分堆焊司太莱合金 Stellite seat surface
- PH : 析出硬化热处理 Precipitation hardening                      ● SF : 全部堆焊司太莱合金 Stellite full surface

**表 1-1 阀体材质: 碳钢**

**Table 1-1 BODY MATERIAL : CARBON STEEL**

阀体材质 Body material		SCPH2/A216-WCB/ A105, SCPH21/A217-WC6/ A182-F11, SCPH32/A217-WC9/ A182-F22, SCPL1/A352-LCB		
套筒 Cage	材质 Material	SCS24/SUS630	SCS24/SUS630	司太莱合金铸件 Stellite
	处理 Treatment	PH	PH	—
阀芯 Plug	材质 Material	SUS410	SUS410	A182-F11
	处理 Treatment	HT	HT	SS/SF
阀座 Seat ring	材质 Material	SUS410	SUS410	A182-F11
	处理 Treatment	HT	HT	SS/SF
平衡密封环 Balance seal	材质 Material	R.TFE	柔性石墨 Grafoil	柔性石墨 Grafoil
	垫环 Back ring	SUS316	—	—
垫圈 Gasket	材质 Material	T/#1806GR	T/#1806GR	T/#1806GR
阀座允许泄漏量 Seat Leakage	ANSI	Class IV	Class IV	Class IV
	Rated Cv×	0.01%	0.01%	0.01%
使用温度 Operating temperature °C	SCPH2/WCB body	-5~+230	-5~+425	-5~+475
	SCPH21/WC6 body	-5~+230	-5~+425	-5~+565
	SCPH32/WC9 body	-5~+230	-5~+425	-5~+565
	SCPL1/LCB body	-45~+230	-45~+350	—

**表 1-2 阀体材质: 不锈钢**

**Table 1-2 BODY MATERIAL : STAINLESS STEEL**

阀体材质 Body material		SCS13A/A351-CF8/SUSF304, SCS14A/A351-CF8M/SUSF316		
套筒 Cage	材质 Material	SCS14A/SUS316		
	处理 Treatment	Hcr		
阀芯 Plug	材质 Material	SUS316	SUS316	SUS316
	处理 Treatment	—	SS/SF	SS/SF
阀座 Seat ring	材质 Material	SUS316	SUS316	SUS316
	处理 Treatment	—	SS/SF	SS/SF
平衡密封环 Balance seal	材质 Material	R.TFE*①	R.TFE*①	柔性石墨 Grafoil
	垫环 Back ring	SUS316	SUS316	—
垫圈 Gasket	材质 Material	T/#1806GR/T/#9090	T/#1806GR	T/#1806GR
阀座允许泄漏量 Seat Leakage	ANSI	Class IV	Class IV	Class IV
	Rated Cv×	0.01%	0.01%	0.01%
使用温度 Operating Temp. °C		-196~+230	-196~+230	-196~+565

\*①流体温度在-75℃以下的场合, 平衡密封环的材质: Fluoroloy G; 垫环材质: Elgiloy。

When the fluid temperature is below -75℃, the materials for the balance seal and the back ring will be Fluoroloy G and Elgiloy, respectively.

表 2 阀体材质的使用温度·压力范围

Table 2 BODY MATERIAL/OPERATING PRESSURE-TEMPERATURE RATING

UNIT : MPa G

温度 Temp. °C	ANSI Class 900						ANSI Class 1500						ANSI Class 2500					
	SCPL1	SCPH2	SCPH21	SCPH32	SCS13A	SCS14A	SCPL1	SCPH2	SCPH21	SCPH32	SCS13A	SCS14A	SCPL1	SCPH2	SCPH21	SCPH32	SCS13A	SCS14A
	LCB	A105 WCB	F11 WC6	F22 WC9	F304 CF8	F316 CF8M	LCB	A105 WCB	F11 WC6	F22 WC9	F304 CF8	F316 CF8M	LCB	A105 WCB	F11 WC6	F22 WC9	F304 CF8	F316 CF8M
-196~38	—	—	—	—	14.88	14.88	—	—	—	—	24.79	24.79	—	—	—	—	41.33	41.34
-45~38	14.35	—	—	—	14.88	14.88	23.92	—	—	—	24.79	24.79	39.87	—	—	—	41.33	41.34
-5~38	14.35	15.31	15.50	15.50	14.88	14.88	23.92	25.51	25.84	25.84	24.79	24.79	39.87	42.52	43.07	43.07	41.33	41.34
50	14.18	15.01	15.33	15.35	14.34	14.43	23.64	25.02	25.55	25.58	23.90	24.04	39.40	41.70	42.59	42.64	39.84	40.07
100	13.52	13.90	14.62	14.70	12.25	12.65	22.53	23.16	24.36	24.50	20.42	21.09	37.56	38.62	40.61	40.85	34.01	35.14
150	13.18	13.56	13.90	13.98	10.89	11.54	21.96	22.60	23.18	23.30	18.16	19.24	36.60	37.66	38.61	38.84	30.26	32.07
200	12.79	13.14	13.63	13.45	9.82	10.69	21.32	21.89	22.73	22.40	16.37	17.83	35.53	36.50	37.88	37.35	27.28	29.71
250	12.17	12.51	13.33	13.26	9.15	10.02	20.28	20.84	22.22	22.10	15.26	16.68	33.80	34.75	37.03	36.83	25.43	27.80
300	11.30	11.61	12.72	12.72	8.71	9.49	18.84	19.36	21.20	21.20	14.52	15.80	31.40	32.26	35.33	35.33	24.20	26.34
350	10.78	11.08	12.06	12.06	8.42	9.12	17.96	18.46	20.11	20.11	14.02	15.20	29.95	30.78	33.51	33.51	23.36	25.36
375		10.94	11.63	11.63	8.32	8.91		18.22	19.38	19.38	13.86	14.84		30.37	32.32	32.32	23.12	24.74
400		10.34	10.98	10.98	8.23	8.72		17.24	18.28	18.28	13.72	14.55		28.73	30.47	30.47	22.87	24.25
425		8.62	10.53	10.53	8.14	8.59		14.37	17.54	17.54	13.57	14.32		23.94	29.23	29.23	22.63	23.87
450		6.01	10.13	10.13	8.06	8.42		10.02	16.89	16.89	13.42	14.03		16.68	28.16	28.16	22.37	23.38
475		4.06	9.50	9.50	7.97	8.20		6.76	15.82	15.82	13.27	13.67		11.28	26.36	26.36	22.13	22.79
500			8.33	8.33	7.81	8.05			13.89	13.89	13.02	13.40			23.15	23.15	21.71	22.34
525			6.08	6.58	7.15	7.73			10.12	10.96	11.94	12.89			16.88	18.26	19.88	21.47
550			3.83	4.91	6.54	7.49			6.38	8.17	10.91	12.48			10.63	13.63	18.17	20.79
575			2.55	3.51	6.02	7.22			4.24	5.85	10.04	12.04			7.08	9.74	16.72	20.07
600			1.75	2.29	5.01	6.43			2.94	3.82	8.35	10.71			4.90	6.36	13.92	17.85
625					3.92	5.48					6.54	9.12					10.89	15.20
650					3.16	4.23					5.25	7.06					8.75	11.76
675					2.33	3.78					3.88	6.31					6.45	10.53

图 1 平衡密封环使用温度·压力范围

Fig. 1 BALANCE SEAL PRESSURE-TEMPERATURE RATINGS

图 1-1 R.TFE/SUS316

Fig. 1-1 R.TFE/SUS316

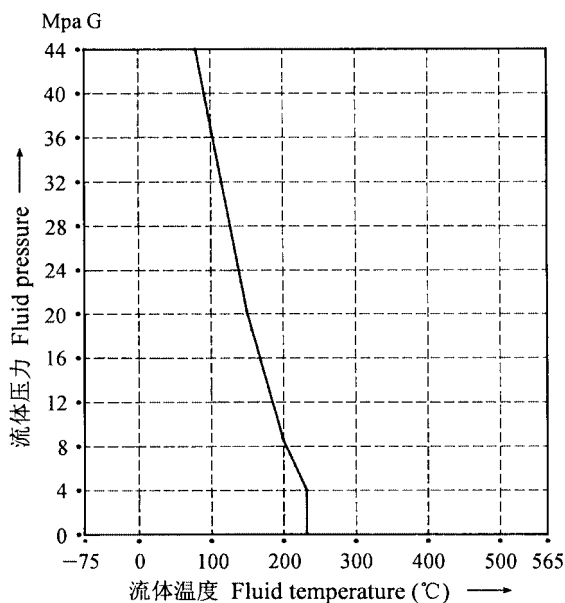
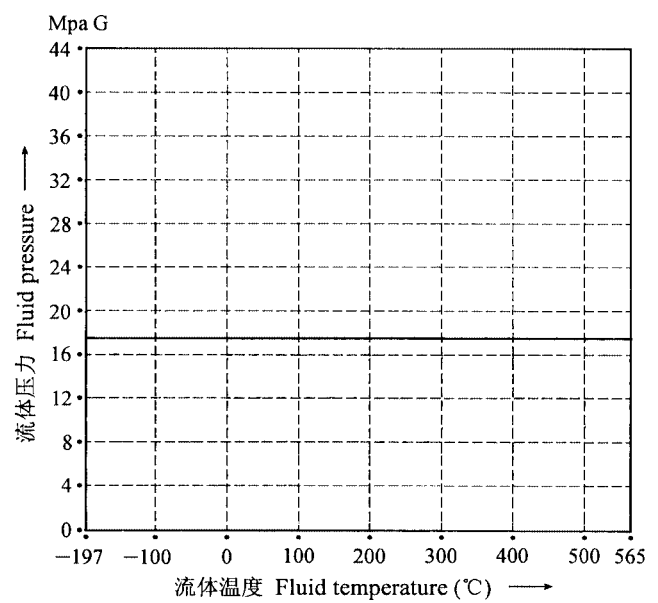
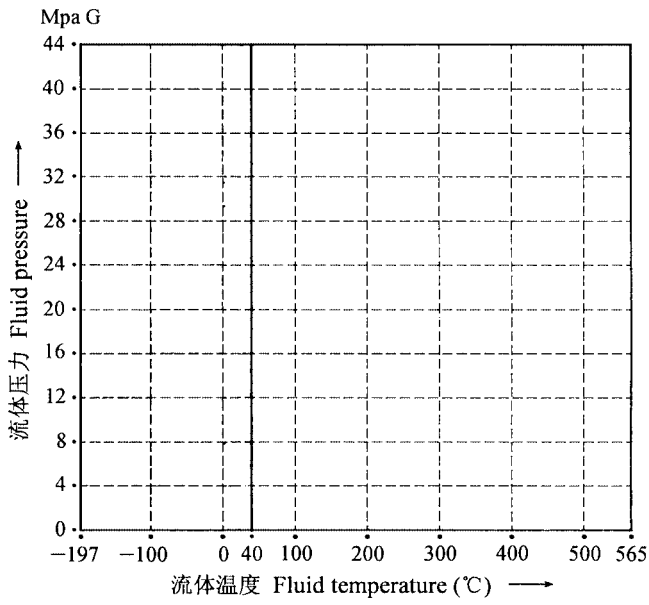


图 1-2 柔性石墨

Fig. 1-2 GRAFOIL



**图 1-3 FLUOROLOY G/ELGILOY**  
**Fig. 1-3 FLUOROLOY G/ELGILOY**

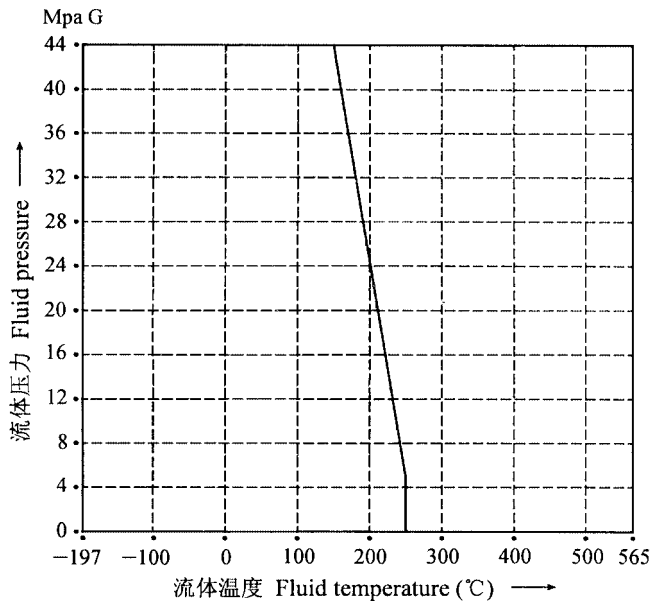


**图 2 填料使用温度·压力范围**

**Fig. 2 GLAND PACKING PRESSURE-TEMPERATURE RATINGS**

**图 2-1 聚四氟乙烯碳纤维 (P6528+P4519)**

**Fig. 2-1 TEFLON FIBER**



**图 2-2 柔性石墨(P6710CH+P6616CH)**

**Fig. 2-2 GRAFOIL**

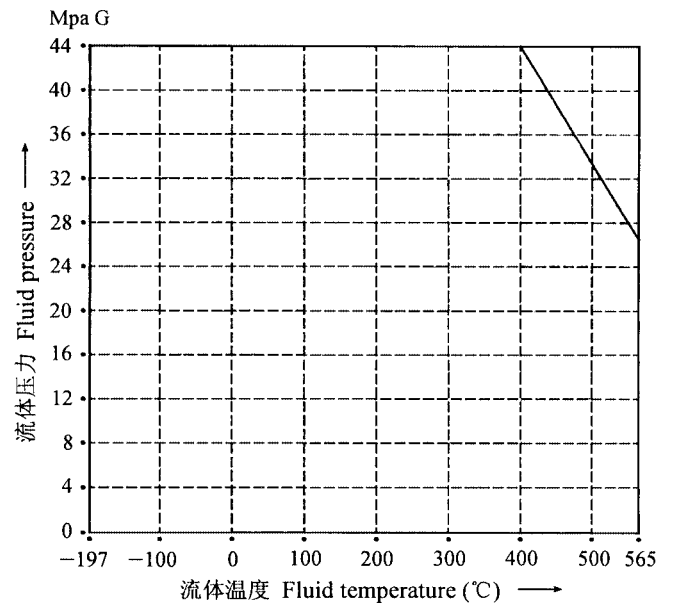


图 3 垫圈使用温度·压力范围

Fig. 3 GASKET PRESSURE-TEMPERATURE RATINGS

图 3-1 柔性石墨 / SUS316 (T/#1806GR)

Fig. 3-1 GRAFOIL/SUS316

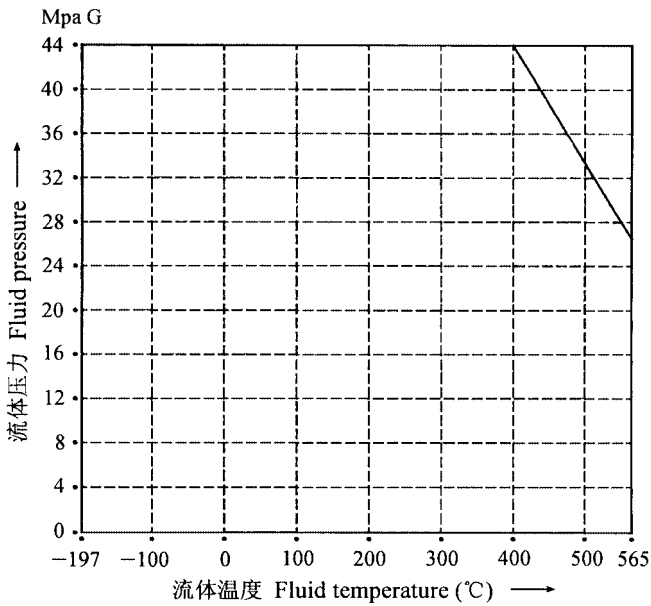


图 3-2 聚四氟乙烯 / SUS316 (T/#9090)

Fig. 3-2 TEFLON/SUS316

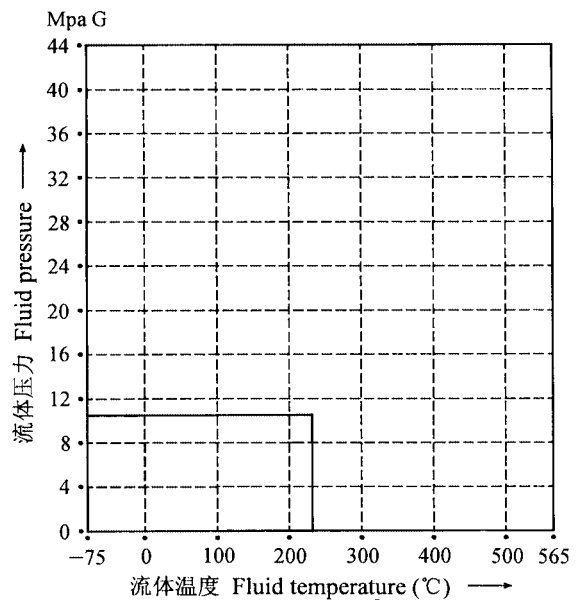


表 3 额定 Cv 及行程

Table 3 Cv VALUE AND STROKE

表 3-1 公称压力 ANSI Class 900、1500

Table 3-1 BODY RATING ANSI Class 900、1500

公称通径 Valve size inch (mm)	阀芯尺寸 Plug size inch (mm)	额定 Rated Cv		行程 Stroke mm
		EQ%	Linear	
1.5 (40)	1 (25)	17	20	20
	1.25(32)	25	30	20
2 (50)	1 (25)	17	20	20
	1.25(32)	25	30	20
	1.5 (40)	50	60	25
3 (80)	1.5 (40)	50	60	25
	2 (50)	75	90	40
	2.5 (65)	110	132	40
4 (100)	2 (50)	75	90	40
	2.5 (65)	110	132	40
	3 (80)	170	204	50
6 (150)	3 (80)	170	204	50
	4 (100)	275	330	70
	5 (125)	370	445	70
8 (200)	4 (100)	275	330	70
	5 (125)	370	445	70
	7 (175)	650	700	80
10 (250)	7 (175)	650	700	80
	8 (200)	900	970	90
	8 (200)	900	970	90
	10 (250)	1300	1400	100

表 3-2 公称压力 ANSI Class 2500

Table 3-2 BODY RATING ANSI Class 2500

公称通径 Valve size inch (mm)	阀芯尺寸 Plug size inch (mm)	额定 Rated Cv		行程 Stroke mm
		EQ%	Linear	
1.5 (40)	1 (25)	17	20	20
2 (50)	1 (25)	17	20	20
	1.25(32)	30	36	25
3 (80)	1.25(32)	30	36	25
	2 (50)	75	90	40
4 (100)	2 (50)	75	90	40
	2.5 (65)	125	150	50
6 (150)	2.5 (65)	125	150	50
	4 (100)	275	330	70
8 (200)	4 (100)	275	330	70
	5 (125)	480	530	80

图4 本体部构造

Fig. 4 BODY SECTION VIEW

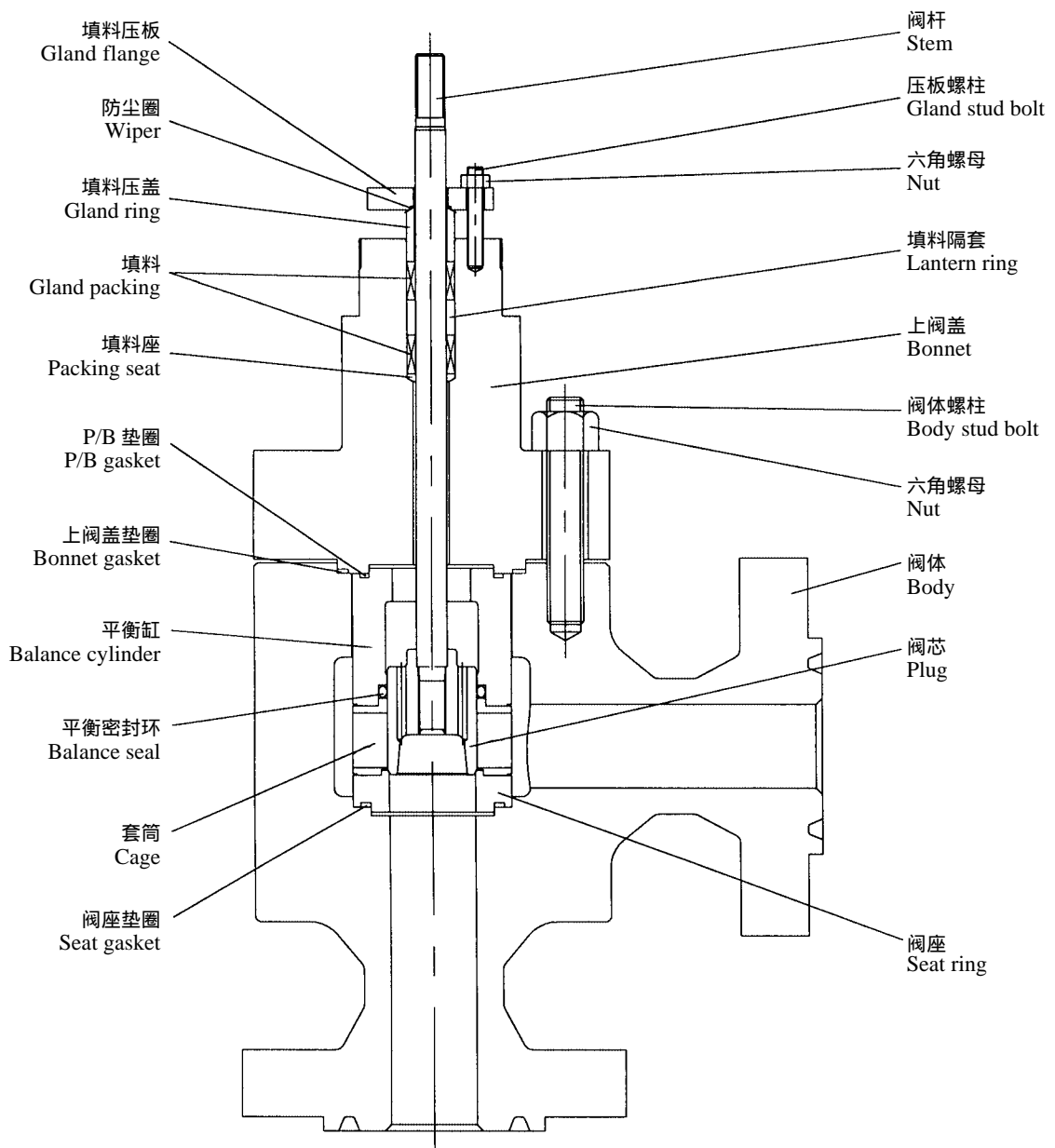


表 4 最大允许压差 ( 单位: MPa )

Table 4 ALLOWABLE PRESSURE DROPS (UNIT : MPa)

阀门口径与执行机构的标准组合请参见第 12~21 页。

See pages 12~21, for valve size-actuator size combinations.

DA : 正作用 ( 气压增加时阀闭 ) Direct action ( Air to valve shut )

RA : 反作用 ( 气压增加时阀开 ) Reverse action ( Air to valve open )

表 4-1 薄膜式执行机构 (5200LA)

Table 4-1 DIAPHRAGM ACTUATOR(5200LA)

表 4-1A 填料: 聚四氟乙烯碳纤维 (P6528+P4519) / 介质温度: +230℃ 以下

Table 4-1A PACKING : TFE FIBER/MEDIUM TEMPERATURE : UNDER +230℃

公称压力 Body rating	执行机构 尺寸 Actuator size	气源压力 Air supply (不平衡) (Off-balance) KPa G	阀座形式 Seat ring	平衡密封环: 强化聚四氟乙烯 / SUS316 Balance seal : Reinforced Teflon/SUS316										
				阀芯尺寸 Plug size ( inch )										
				1	1.25	1.5	2	2.5	3	4	5	7	8	10
ANSI Class 900、1500	350	300 (80)	金属密封	19.80	19.21	18.42	9.94	—	—	—	—	—	—	—
	450			25.09	24.70	24.21	23.62	21.13	15.94	10.31	—	—	—	—
	650			—	—	—	25.84	25.84	25.84	25.84	25.84	18.94	15.99	—
ANSI Class 2500	350	300 (80)	金属密封	19.80	19.21	—	9.94	—	—	—	—	—	—	—
	450			25.09	24.70	—	23.62	21.13	—	—	—	—	—	—
	650			—	—	—	43.07	43.07	—	36.31	25.88	—	—	—

表 4-1B 填料: 柔性石墨(P6710CH+P6616CH) / 介质温度: -196~+565℃

Table 4-1B PACKING : GRAFOIL/MEDIUM TEMPERATURE : -196~+565℃

公称压力 Body rating	执行机构 尺寸 Actuator size	气源压力 Air supply (不平衡) (Off-balance) KPa G	阀座形式 Seat ring	平衡密封环: 柔性石墨 Balance seal : GRAFOIL										
				阀芯尺寸 Plug size ( inch )										
				1	1.25	1.5	2	2.5	3	4	5	7	8	10
ANSI Class 900、1500	350	300 (80)	金属密封	—	—	—	—	—	—	—	—	—	—	—
	450			17.15	14.94	13.34	—	—	—	—	—	—	—	—
	650			—	—	—	17.15	—	—	—	—	—	—	—
ANSI Class 2500	350	300 (80)	金属密封	—	—	—	—	—	—	—	—	—	—	—
	450			17.15	14.94	—	—	—	—	—	—	—	—	—
	650			—	—	—	17.15	—	—	—	—	—	—	—



表 4-2 气缸式双动作型执行机构 (6300LA)

Table 4-2 DOUBLE ACTING CYLINDER ACTUATOR(6300LA)

表 4-2A 填料：聚四氟乙烯碳纤维 (P6528+P4519) / 介质温度：+230℃ 以下

Table 4-2A PACKING : TFE FIBER /MEDIUM TEMPERATURE : UNDER +230℃

公称压力 Body rating	执行机构尺寸 Actuator size	气源压力 Air supply KPa G	阀座形式 Seat ring	平衡密封环：强化聚四氟乙烯 / SUS316 Balance seal : Reinforced Teflon/SUS316											
				阀芯尺寸 Plug size ( inch )											
				1	1.25	1.5	2	2.5	3	4	5	7	8	10	
ANSI Class 900、1500	200	400	金属密封	25.87	25.87	25.87	25.87	25.87	—	—	—	—	—	—	
		500		25.87	25.87	25.87	25.87	25.87	—	—	—	—	—		
	300	400		25.87	25.87	25.87	25.87	25.87	25.87	—	—	—	—	—	
		500		25.87	25.87	25.87	25.87	25.87	25.87	—	—	—	—	—	
	450	400		—	—	—	—	—	25.87	25.87	25.87	25.87	25.87	25.87	
		500		—	—	—	—	—	25.87	25.87	25.87	25.87	25.87	25.87	
	600	400		—	—	—	—	—	25.87	25.87	25.87	25.87	25.87	25.87	
		500		—	—	—	—	—	25.87	25.87	25.87	25.87	25.87	25.87	
	ANSI Class 2500	200		400	金属密封	37.14	36.46	—	34.99	—	—	—	—	—	—
				500		43.12	43.12	—	43.12	—	—	—	—	—	—
		300		400		43.12	43.12	—	43.12	43.12	—	—	—	—	—
				500		43.12	43.12	—	43.12	43.12	—	—	—	—	—
450		400	—	—		—	—	43.12	—	43.12	38.81	—	—	—	
		500	—	—		—	—	43.12	—	43.12	43.12	—	—	—	
600		400	—	—		—	—	—	—	43.12	43.12	—	—	—	
		500	—	—		—	—	—	—	43.12	43.12	—	—	—	

表 4-2B 填料：柔性石墨(P6710CH+P6616CH) / 介质温度：-196~+565℃

Table 4-2B PACKING : GRAFOIL/MEDIUM TEMPERATURE : -196~+565℃

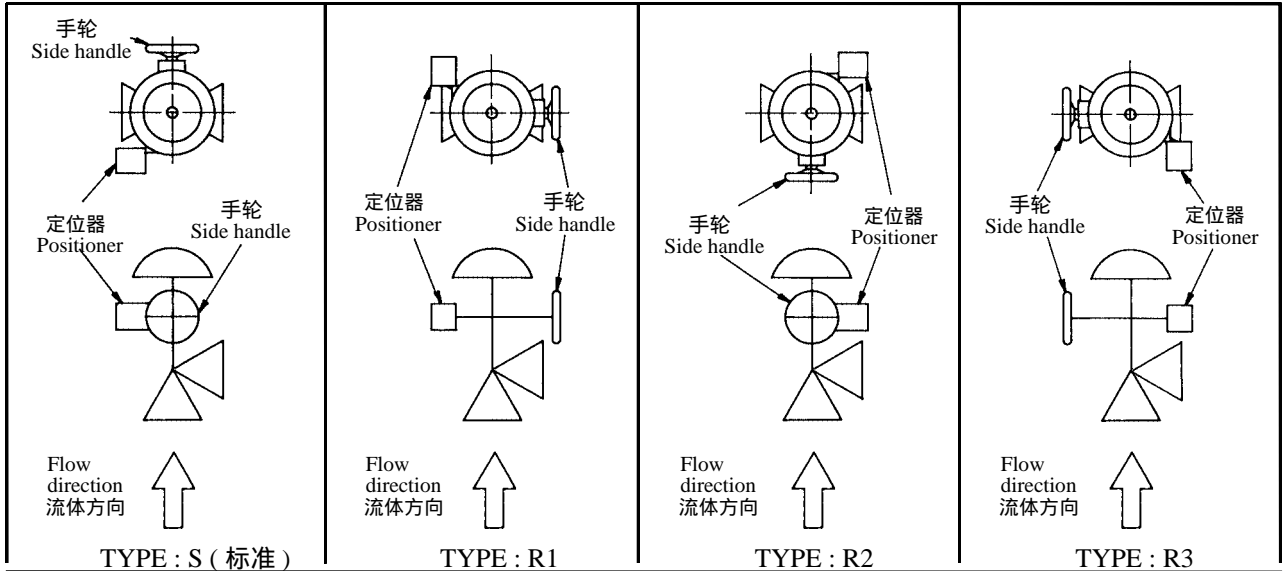
公称压力 Body rating	执行机构尺寸 Actuator size	气源压力 Air supply KPa G	阀座形式 Seat ring	平衡密封环：柔性石墨 Balance seal : GRAFOIL										
				阀芯尺寸 Plug size ( inch )										
				1	1.25	1.5	2	2.5	3	4	5	7	8	10
ANSI Class 900、1500	300	400	金属密封	17.15	17.15	17.15	17.15	17.15	—	—	—	—	—	
		500		17.15	17.15	17.15	17.15	17.15	—	—	—	—	—	
	450	400		—	—	—	—	—	17.15	17.15	17.15	—	—	—
		500		—	—	—	—	—	17.15	17.15	17.15	—	—	—
	600	400		—	—	—	—	—	—	—	—	17.15	17.15	17.15
		500		—	—	—	—	—	—	—	—	17.15	17.15	17.15
ANSI Class 2500	300	400	金属密封	17.15	17.15	—	17.15	—	—	—	—	—	—	
		500		17.15	17.15	—	17.15	—	—	—	—	—	—	
	450	400		—	—	—	—	17.15	—	17.15	—	—	—	—
		500		—	—	—	—	17.15	—	17.15	—	—	—	—
	600	400		—	—	—	—	—	—	17.15	17.15	—	—	—
		500		—	—	—	—	—	—	17.15	17.15	—	—	—

图 5 控制阀安装方位 (5200LA)

Fig. 5 ACTUATOR MOUNTING FORMS FOR 5200LA

图 5-1 执行机构尺寸: 350、450

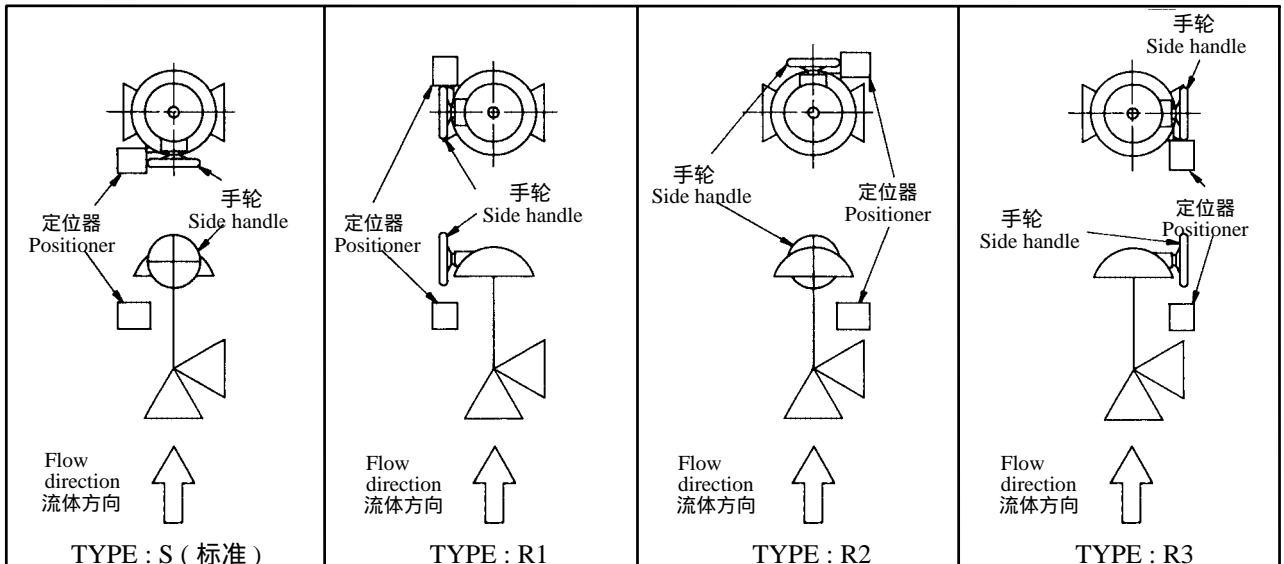
Fig. 5-1 ACTUATOR SIZE : 350、450



注) 安装位置为非标准时, 请指定安装位置的形式 (TYPE)。  
NOTE : Type S is automatically applied, unless otherwise specified.

图 5-2. 执行机构尺寸: 650

Fig. 5-2 ACTUATOR SIZE : 650



注) 安装位置为非标准时, 请指定安装位置的形式 (TYPE)。  
NOTE : Type S is automatically applied, unless otherwise specified.

表 5 与标准执行机构组合时的产品重量 (单位: kg)

Table 5 NET WEIGHT OF STANDARD VALVE AND ACTUATOR COMBINED (UNIT: kg)

本表中所列重量, 均为执行机构和本体部的标准产品重量, 不包括附件、手动机构等。

Only standard types are represented. Weights of accessories, a handwheel and the like are not included.

表 5-1 上阀盖形式: 标准型

Table 5-1 BONNET TYPE : STANDARD TYPE

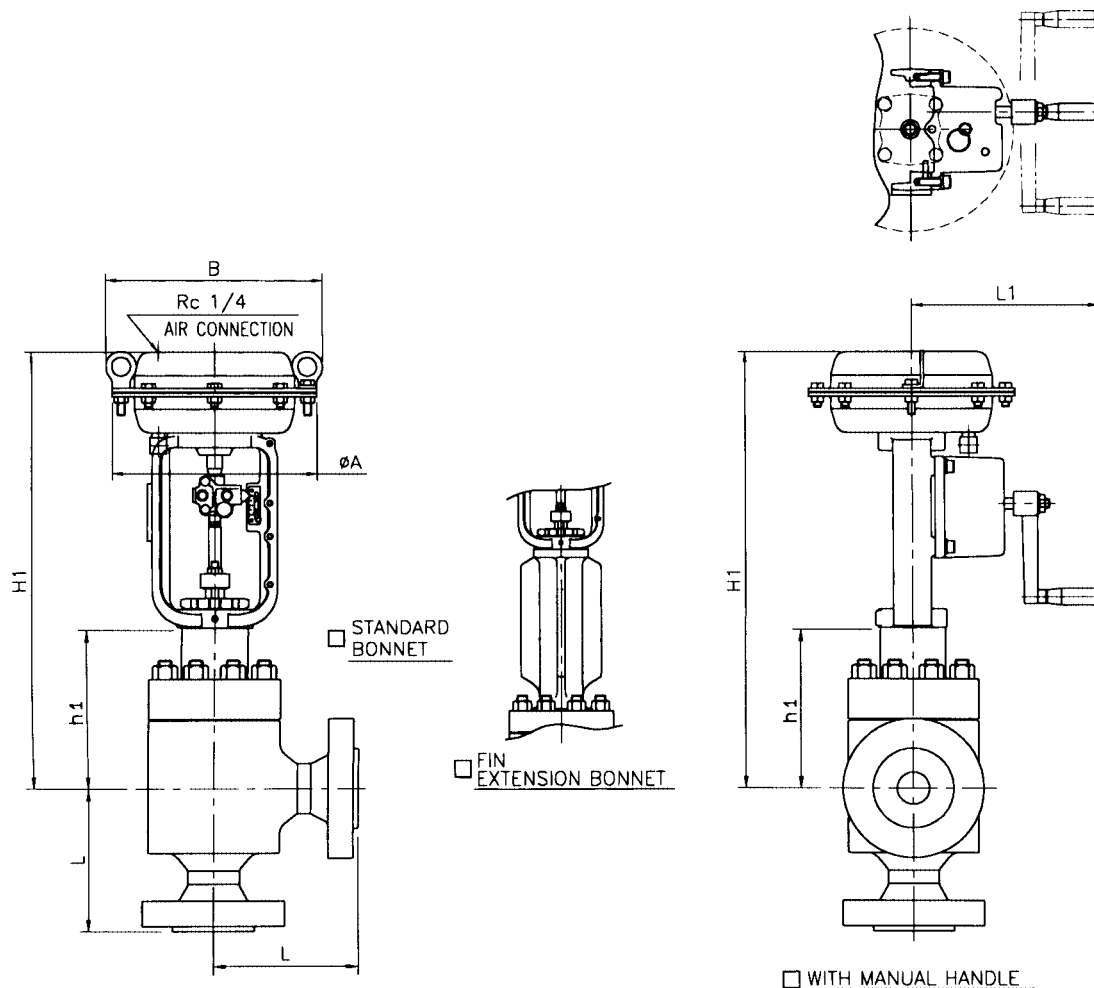
公称口径 Valves size Inch (mm)	本体规格 Body rating class	薄膜式执行机构 Diaphragm actuator size 5200LA					双动作气缸式执行机构 Double acting Cylinder actuator size 6300LA			
		ANSI Class	350	450S	450L	650S	650L	200	300	450
1 (25)	900、1500	115	140				130			
	2500	135	165				155			
1.5 (40)	900、1500	150	180				170	205		
	2500	190	215				205	240		
2 (50)	900、1500	205	230				220	255		
	2500	255	285				275	310		
3 (80)	900、1500	370	395				385	420		
	2500	465	495				485	520		
4 (100)	900、1500		460	485	590	625		525	620	
	2500		595	620	725	760		655	745	
6 (150)	900、1500			745	850	880			880	1000
	2500			910	1015	1045			1045	1155
8 (200)	900、1500			1045	1150	1180			1165	1275
	2500			1270	1375	1405			1310	1425
10 (250)	900、1500					1785			1835	1935
12 (300)	900、1500					2555			2600	2710

表 5-2 上阀盖形式: 散热片型

Table 5-2 BONNET TYPE : FIN-EXTENSION TYPE

公称口径 Valves size Inch (mm)	本体规格 Body rating class	薄膜式执行机构 Diaphragm actuator size 5200LA					双动作气缸式执行机构 Double acting Cylinder actuator size 6300LA			
		ANSI Class	350	450S	450L	650S	650L	200	300	450
1 (25)	900、1500	120	145							
	2500	140	170							
1.5 (40)	900、1500	155	185					210		
	2500	195	220					245		
2 (50)	900、1500	215	240					265		
	2500	265	295					320		
3 (80)	900、1500	380	405					430		
	2500	475	505					530		
4 (100)	900、1500		490	515	620	655		555	650	
	2500		625	650	755	790		685	775	
6 (150)	900、1500			—	—	—			920	1040
	2500			950	1055	1085			1085	1195
8 (200)	900、1500			—	—	—			1215	1325
	2500			1320	1425	1455			1360	1475
10 (250)	900、1500									1995
12 (300)	900、1500									2790

# ANGLE-VALVE DIRECT ACTION



## DIMENSIONS

UNIT : mm

VALVE SIZE	FACE TO FACE : L	ANSI 900#,1500#				ACTUATOR				
		ANSI 900# RF		ANSI 1500# RF		SIZE	WITH MANUAL HANDLE	CODE No.		
		STD.	FIN EXT.	STD.	FIN EXT.				A	B
		h1		H1						
01	1" (25A)	170	215	315	645	745	350	367	230	5235LA
					710	810	450	472	336	524SLA
93	1.5" (40A)	180	245	395	675	825	350	367	230	5235LA
					740	890	450	472	336	524SLA
02	2" (50A)	200	255	405	685	835	350	367	230	5235LA
					750	900	450	472	336	524SLA
03	3" (80A)	250	310	460	740	890	350	367	230	5235LA
					805	955	450	472	336	524SLA
04	4" (100A)	330	370	520	865	1015	450	472	336	524SLA

\*FLANGE IS FOLLOWING TO A STANDARD WHICH IS DESCRIBED ON SPECIFICATION SHEET.

NOTE:

DRAWING No.

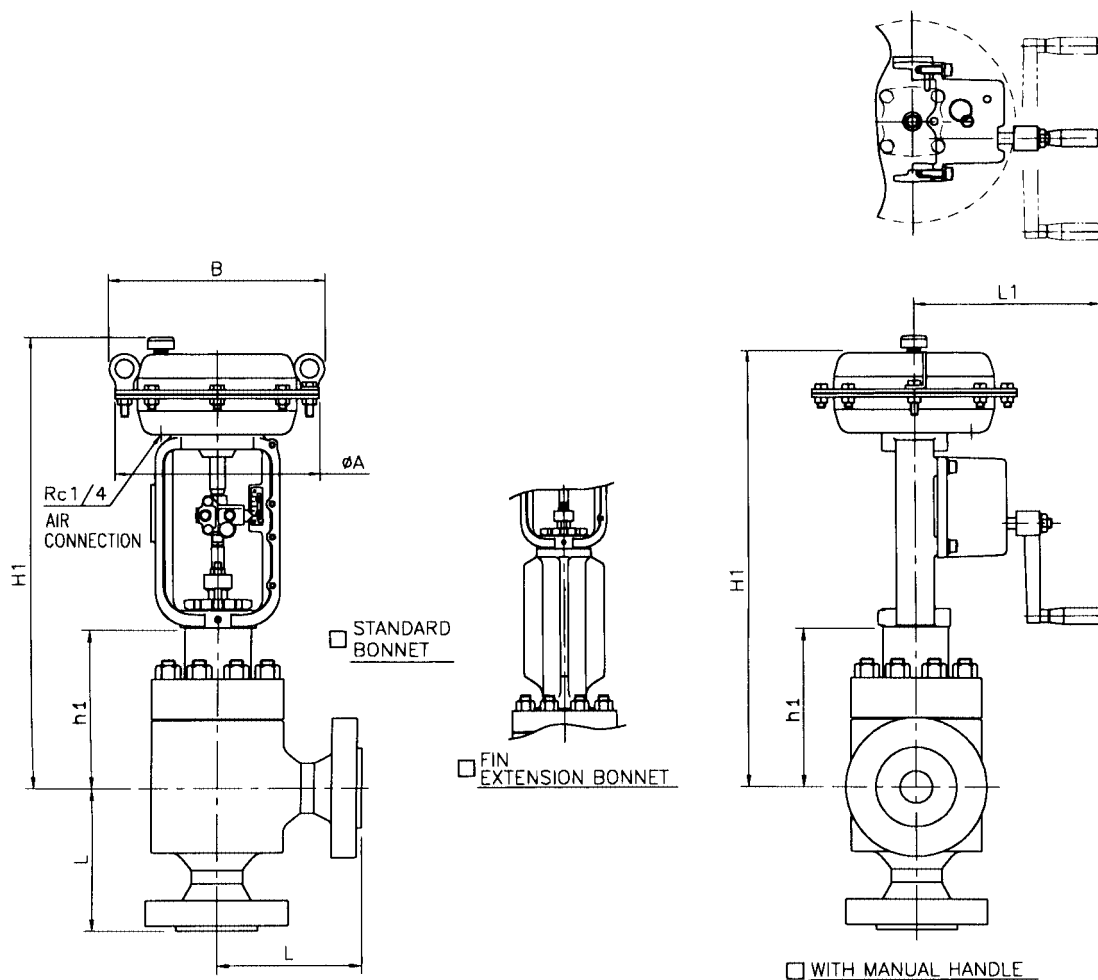
E-511G-5200LA-D-N  
S

REV

A

**KOSO**

# ANGLE-VALVE REVERSE ACTION



## DIMENSIONS

UNIT : mm

VALVE SIZE	FACE TO FACE : L	□ ANSI 900#, 1500#				ACTUATOR				
		□ ANSI 900# RF		□ ANSI 900# RTJ		SIZE	B	□ WITH MANUAL HANDLE	CODE No.	
		□ ANSI 1500# RF	□ ANSI 1500# RTJ	BONNET						A
				□ STD.	□ FIN EXT.					
CODE No.		h1		H1				L1		
01 □ 1" (25A)	170	□ ANSI 900# RF	□ ANSI 900# RTJ	215	315	□ 350	367	230	5235LA	
				750	850	□ 450	472	336	524SLA	
93 □ 1.5" (40A)	180	□ ANSI 1500# RF	□ ANSI 1500# RTJ	245	395	□ 350	367	230	5235LA	
				780	930	□ 450	472	336	524SLA	
02 □ 2" (50A)	200	□ ANSI 900# RF	□ ANSI 900# RTJ	255	405	□ 350	367	230	5235LA	
				790	940	□ 450	472	336	524SLA	
03 □ 3" (80A)	250	□ ANSI 1500# RF	□ ANSI 1500# RTJ	310	460	□ 350	367	230	5235LA	
				845	995	□ 450	472	336	524SLA	
04 □ 4" (100A)	330			370	520	□ 450	472	336	524SLA	

\*FLANGE IS FOLLOWING TO A STANDARD WHICH IS DESCRIBED ON SPECIFICATION SHEET.

NOTE:

DRAWING No.

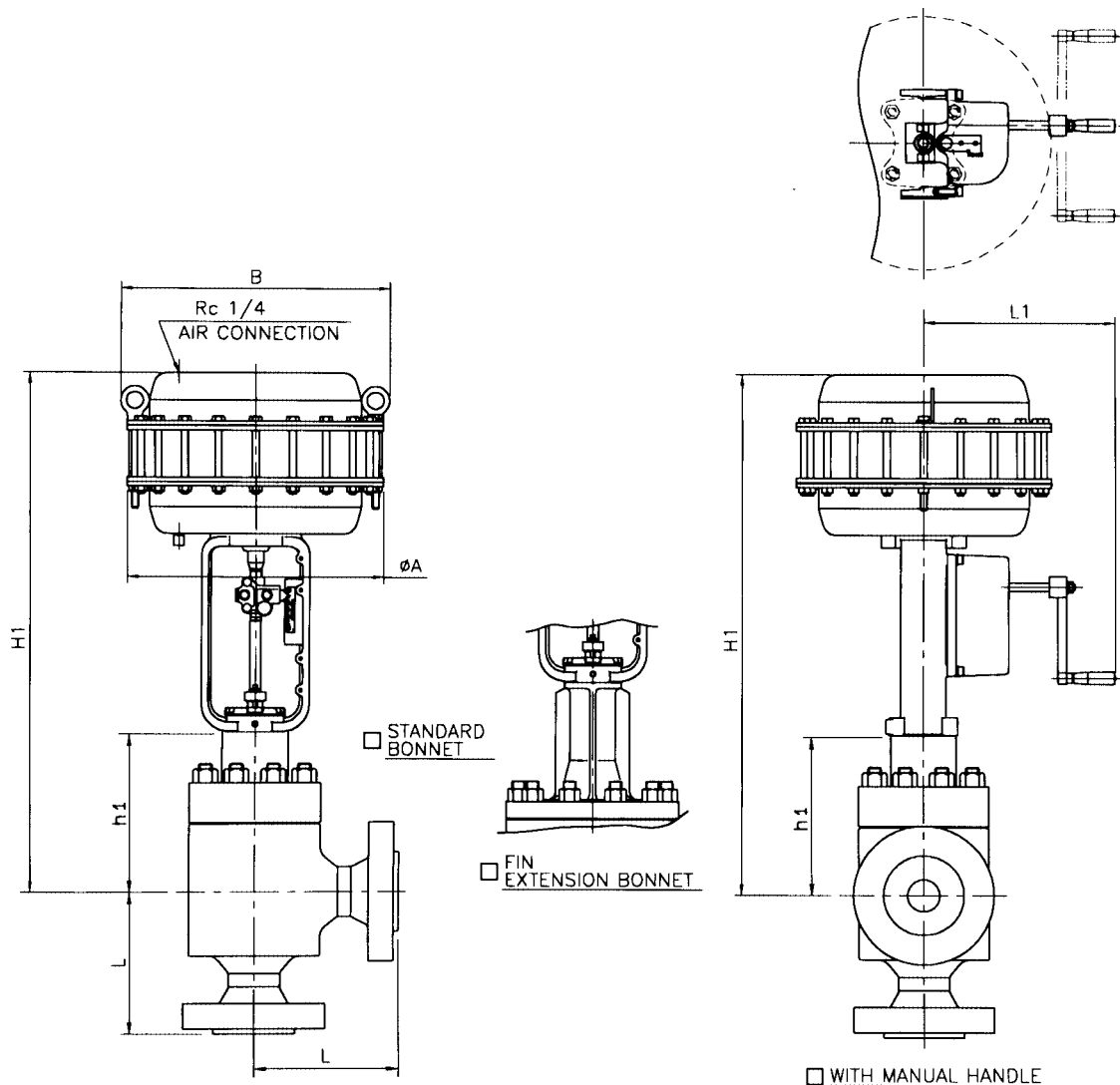
E-511G-5200LA-R-N  
S

REV

A

**KOSO**

# ANGLE-VALVE DIRECT ACTION



## DIMENSIONS

UNIT : mm

VALVE SIZE	FACE TO FACE : L	ANSI 900#, 1500#				ACTUATOR			
		BONNET		BONNET		SIZE	WITH MANUAL HANDLE	CODE No.	
		STD.	FIN EXT.	STD.	FIN EXT.				A
CODE No.		h1		H1					
04 <input type="checkbox"/> 4" (100A)	330	370	520	1005	1155	<input type="checkbox"/> 450	472	<input type="checkbox"/> 336	524LLA
06 <input type="checkbox"/> 6" (150A)	440	385	535	1020	1170	<input type="checkbox"/> 450	472	<input type="checkbox"/> 336	524LLA

\*FLANGE IS FOLLOWING TO A STANDARD WHICH IS DESCRIBED ON SPECIFICATION SHEET.

NOTE:

DRAWING No.

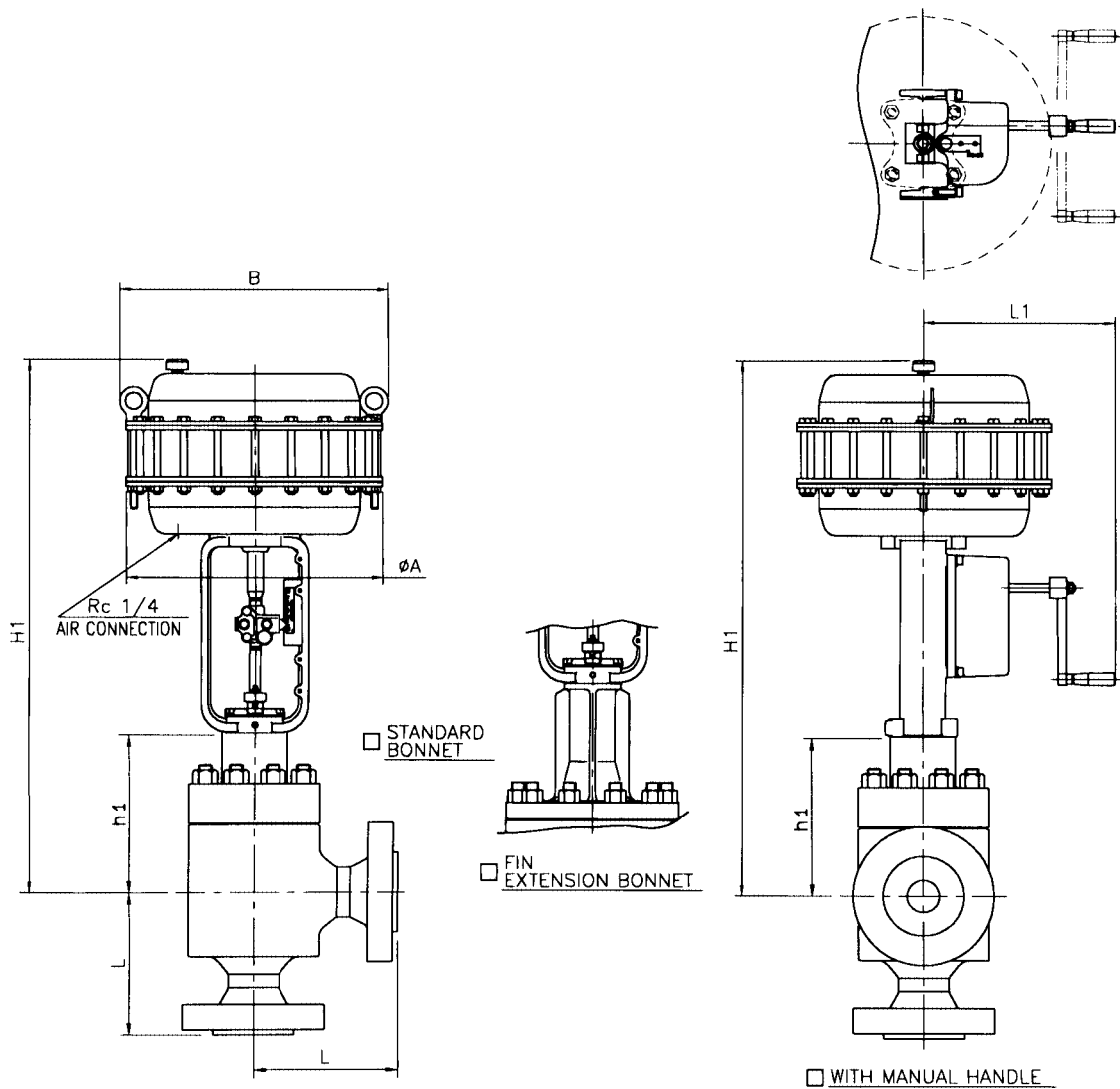
E-511G-524LLA-D-N  
S

REV

A

**KOSO**

# ANGLE-VALVE REVERSE ACTION



## DIMENSIONS

UNIT : mm

VALVE SIZE	FACE TO FACE : L	ANSI 900#, 1500#				ACTUATOR			
		BONNET		BONNET		SIZE	WITH MANUAL HANDLE	CODE No.	
		STD.	FIN EXT.	STD.	FIN EXT.				A
CODE No. 04 <input type="checkbox"/> 4" (100A) 06 <input type="checkbox"/> 6" (150A)	<input type="checkbox"/> ANSI 900# RF <input type="checkbox"/> ANSI 900# RTJ <input type="checkbox"/> ANSI 1500# RF <input type="checkbox"/> ANSI 1500# RTJ	h1	H1						
		370	520	1045	1195	<input type="checkbox"/> 450	472	<input type="checkbox"/> 336	524LLA
		385	535	1060	1210	<input type="checkbox"/> 450	472	<input type="checkbox"/> 336	524LLA

\*FLANGE IS FOLLOWING TO A STANDARD WHICH IS DESCRIBED ON SPECIFICATION SHEET.

NOTE:

DRAWING No.

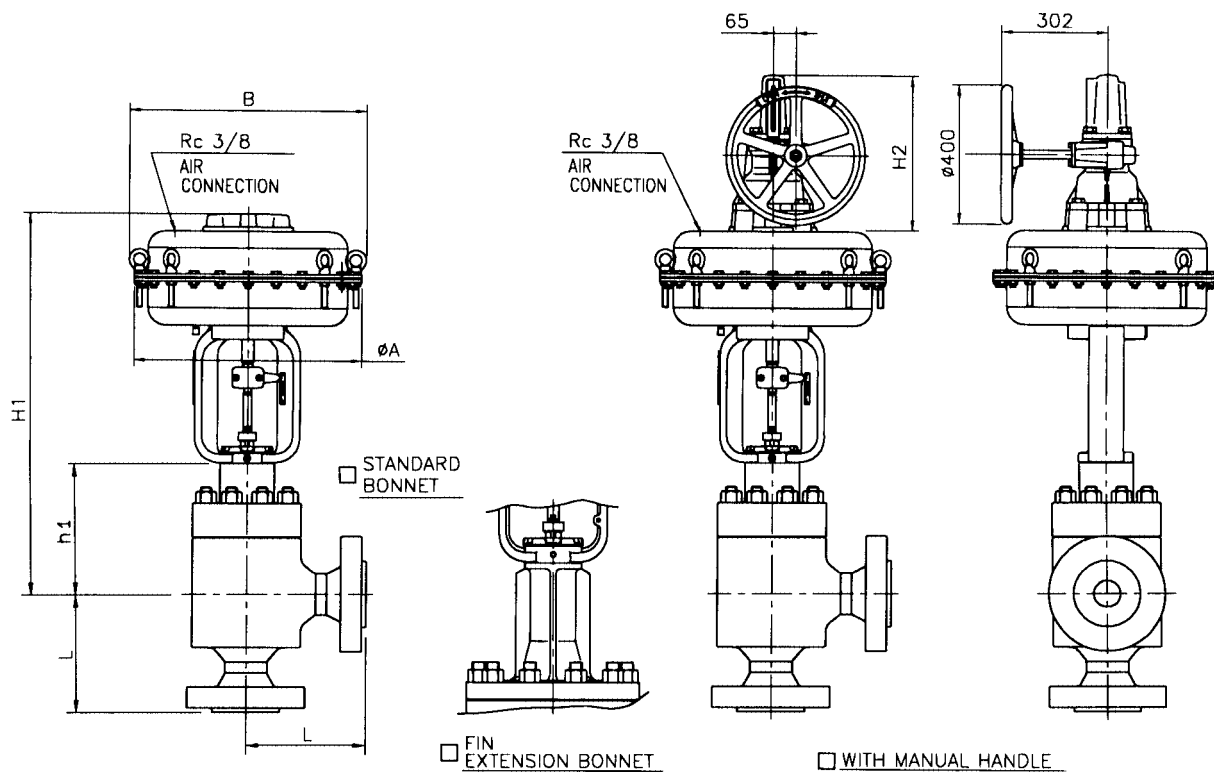
E-511G-524LLA-R-N  
S

REV

A

**KOSO**

# ANGLE-VALVE DIRECT ACTION



## DIMENSIONS

UNIT : mm

VALVE SIZE	FACE TO FACE : L	ANSI 900#,1500#				ACTUATOR			
		BONNET		BONNET		SIZE	WITH MANUAL HANDLE	CODE No.	
		STD.	FIN EXT.	STD.	FIN EXT.				A
CODE No.		h1		H1					
04 <input type="checkbox"/> 4" (100A)	330	370	520	1087	1237	<input type="checkbox"/> 650	678	450	526SLA
06 <input type="checkbox"/> 6" (150A)	440	385	535	1102	1252	<input type="checkbox"/> 650	678	450	526SLA

\*FLANGE IS FOLLOWING TO A STANDARD WHICH IS DESCRIBED ON SPECIFICATION SHEET.

NOTE:

DRAWING No.

E-511G-526SLA-D-N  
S

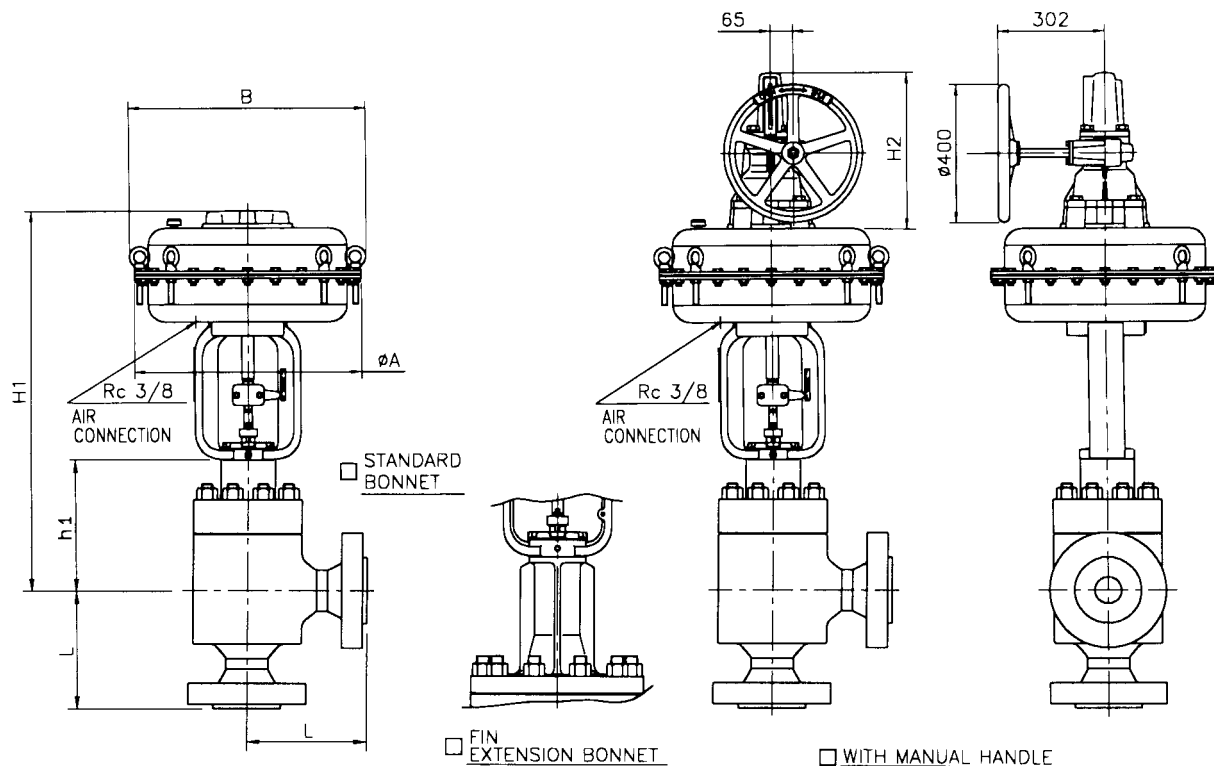
REV

A

**KOSO**



# ANGLE-VALVE REVERSE ACTION



## DIMENSIONS

UNIT : mm

VALVE SIZE	FACE TO FACE : L	ANSI 900#, 1500#				ACTUATOR			
		BONNET		BONNET		SIZE	WITH MANUAL HANDLE	CODE No.	
		STD.	FIN EXT.	STD.	FIN EXT.				A
CODE No.		h1		H1					
04 <input type="checkbox"/> 4" (100A)	330	370	520	1087	1237	<input type="checkbox"/> 650	678	450	526SLA
06 <input type="checkbox"/> 6" (150A)	440	385	535	1102	1252	<input type="checkbox"/> 650	678	450	526SLA

\*FLANGE IS FOLLOWING TO A STANDARD WHICH IS DESCRIBED ON SPECIFICATION SHEET.

NOTE:

DRAWING No.

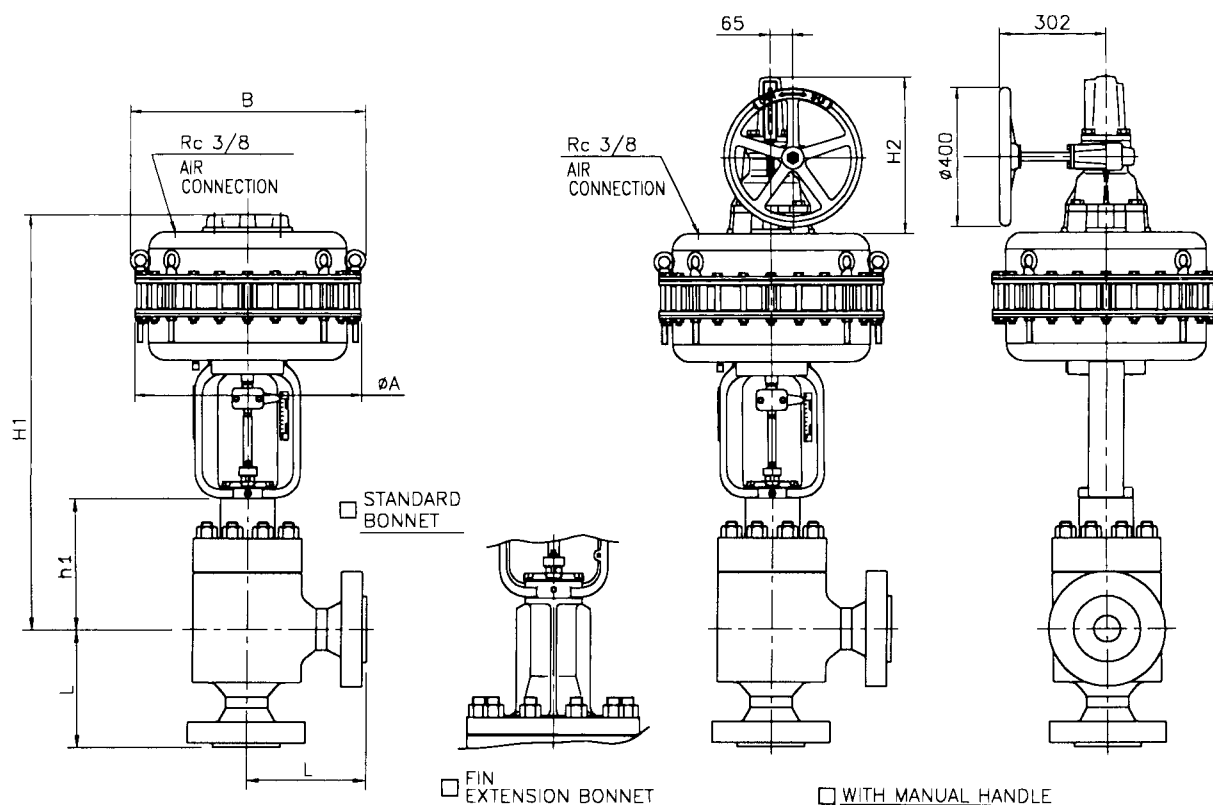
E-511G-526SLA-R-N  
S

REV

A

**KOSO**

# ANGLE-VALVE DIRECT ACTION



## DIMENSIONS

UNIT : mm

VALVE SIZE	FACE TO FACE : L	ANSI 900#, 1500#				ACTUATOR			
		BONNET		BONNET		SIZE	WITH MANUAL HANDLE	CODE No.	
		STD.	FIN EXT.	STD.	FIN EXT.				A
CODE No.		h1		H1					
04	4" (100A)	370	520	1187	1337	650	678	450	526LLA
06	6" (150A)	385	535	1202	1352	650	678	450	526LLA

\*FLANGE IS FOLLOWING TO A STANDARD WHICH IS DESCRIBED ON SPECIFICATION SHEET.

NOTE:

DRAWING No.

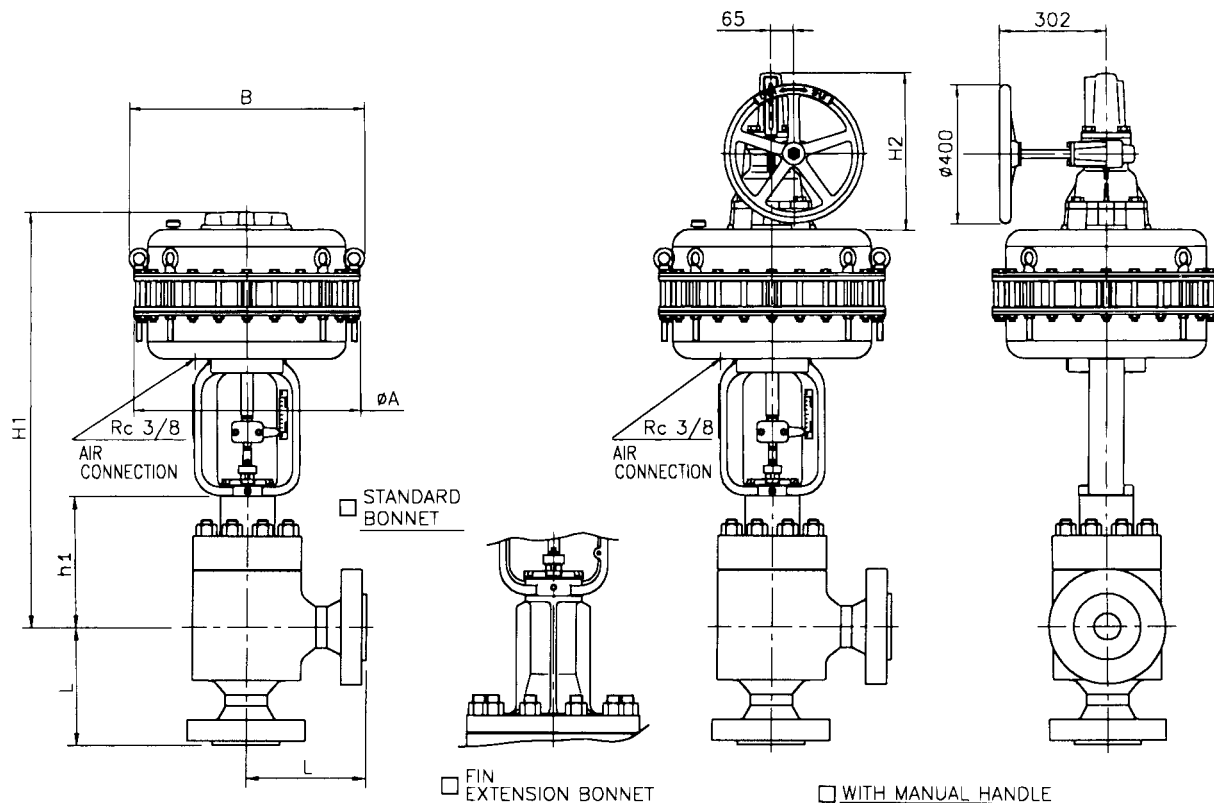
E-511G-526LLA-D-N  
S

REV

A

**KOSO**

# ANGLE-VALVE REVERSE ACTION



## DIMENSIONS

UNIT : mm

VALVE SIZE	FACE TO FACE : L	ANSI 900#, 1500#				ACTUATOR			
		BONNET		BONNET		SIZE	WITH MANUAL HANDLE	CODE No.	
		STD.	FIN EXT.	STD.	FIN EXT.				A
CODE No.		h1		H1					
04 <input type="checkbox"/> 4" (100A)	330	370	520	1187	1337	<input type="checkbox"/> 650	678	450	526LLA
06 <input type="checkbox"/> 6" (150A)	440	385	535	1202	1352	<input type="checkbox"/> 650	678	450	526LLA

\*FLANGE IS FOLLOWING TO A STANDARD WHICH IS DESCRIBED ON SPECIFICATION SHEET.

NOTE:

DRAWING No.

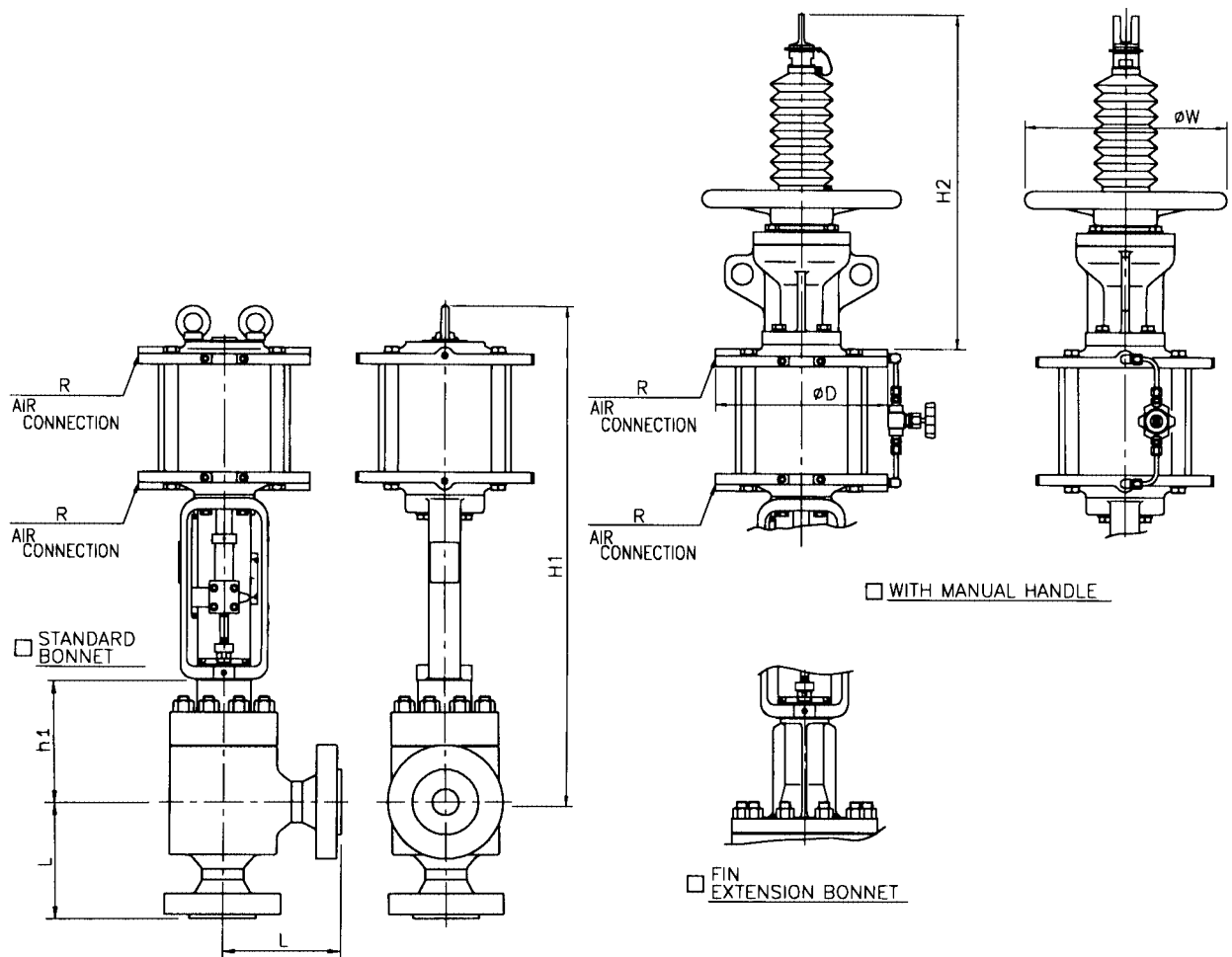
E-511G-526LLA-R-N  
S

REV

A

**KOSO**

# ANGLE-VALVE *Double acting cylinder*



## DIMENSIONS

UNIT : mm

VALVE SIZE CODE No.		FACE TO FACE : L	ANSI 900#,1500#				ACTUATOR				
			BONNET		BONNET		Cylinder SIZE	R	WITH MANUAL HANDLE		CODE No.
			STD.	FIN EXT.	STD.	FIN EXT.			H2	phi W	
			h1		H1						
01	<input type="checkbox"/> 1" (25A)	170	215	315	975	1075	<input type="checkbox"/> 200	Rc3/8	465	320	6320LA
93	<input type="checkbox"/> 1.5" (40A)	180	245	395	1005	1155	<input type="checkbox"/> 200	Rc3/8	465	320	6320LA
02	<input type="checkbox"/> 2" (50A)	200	255	405	1020	1170	<input type="checkbox"/> 200	Rc3/8	465	320	6320LA
03	<input type="checkbox"/> 3" (80A)	250	310	460	1070	1220	<input type="checkbox"/> 200	Rc3/8	465	320	6320LA

\*FLANGE IS FOLLOWING TO A STANDARD WHICH IS DESCRIBED ON SPECIFICATION SHEET.

NOTE:

DRAWING No.

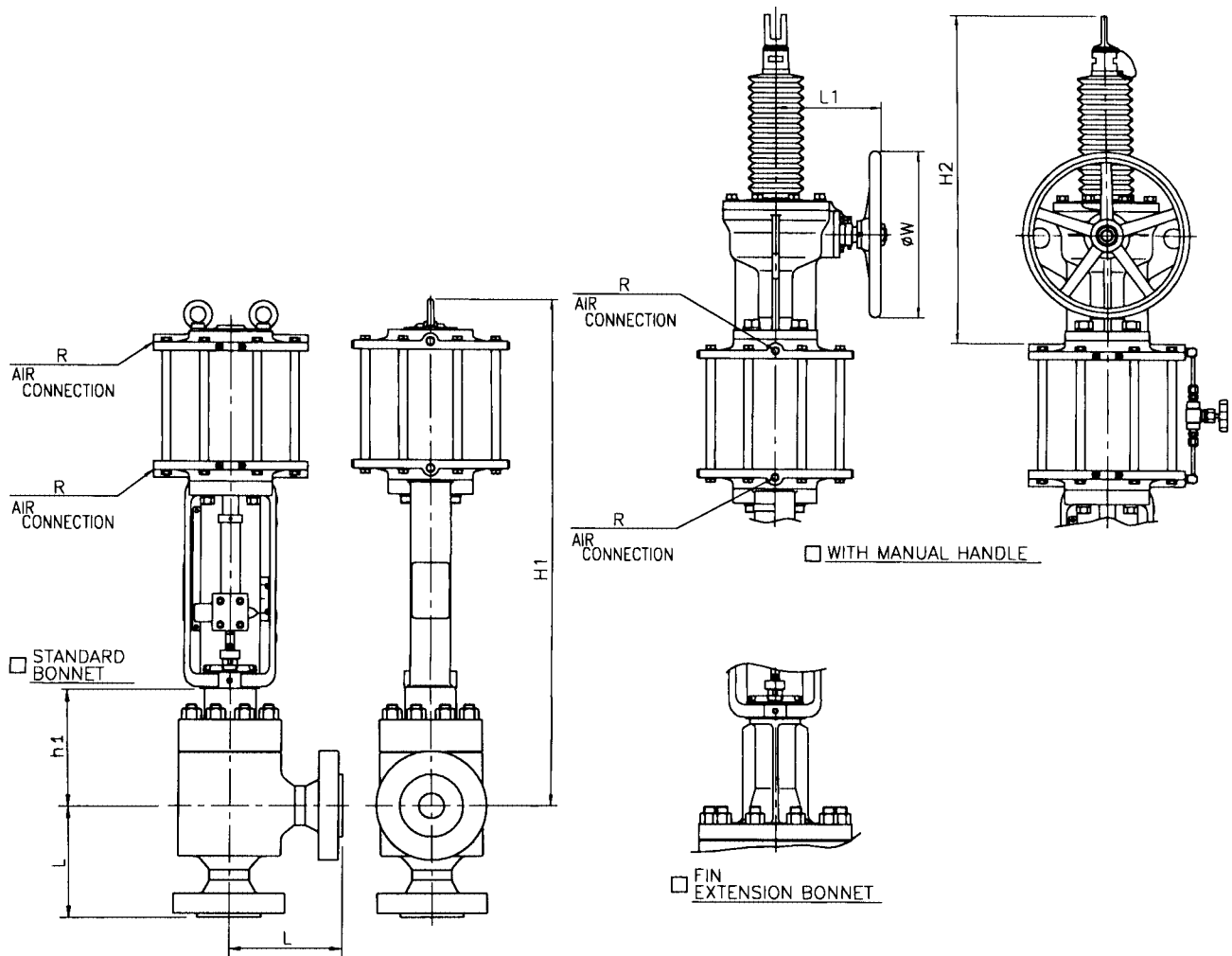
E-511G-6320LA-W-N  
T

REV

A

**KOSO**

# ANGLE-VALVE *Double acting cylinder*



## DIMENSIONS

UNIT : mm

VALVE SIZE CODE No.	FACE TO FACE : L	ANSI 900#,1500#				ACTUATOR						
		BONNET		BONNET		Cylin- Der SIZE	R	WITH MANUAL HANDLE			CODE No.	
		STD.	FIN EXT.	STD.	FIN EXT.			H2	L1	φW		
		h1		H1								
93	1.5" (40A)	180	245	395	1065	1215	□ 300	Rc1/2	615	260	400	6330LA
02	2" (50A)	200	255	405	1075	1225	□ 300	Rc1/2	615	260	400	6330LA
03	3" (80A)	250	310	460	1130	1280	□ 300	Rc1/2	615	260	400	6330LA
04	4" (100A)	330	370	520	1190	1340	□ 300	Rc1/2	615	260	400	6330LA
					1370	1520	□ 450	Rc1/2	765	330	500	6345LA
06	6" (150A)	440	385	535	1205	1355	□ 300	Rc1/2	615	260	400	6330LA
					1385	1535	□ 450	Rc1/2	765	330	500	6345LA

\*FLANGE IS FOLLOWING TO A STANDARD WHICH IS DESCRIBED ON SPECIFICATION SHEET.

NOTE:

DRAWING No.

E-511G-6300LA-W-N  
H

REV

A

**KOSO**